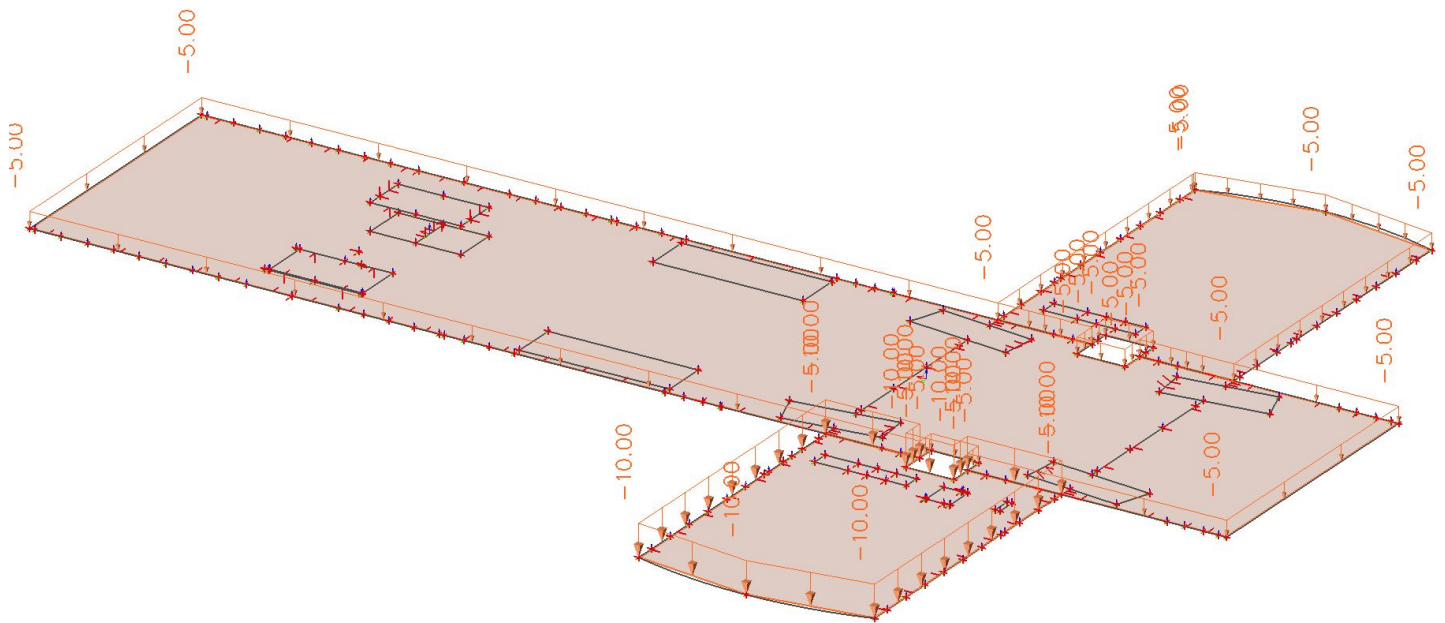


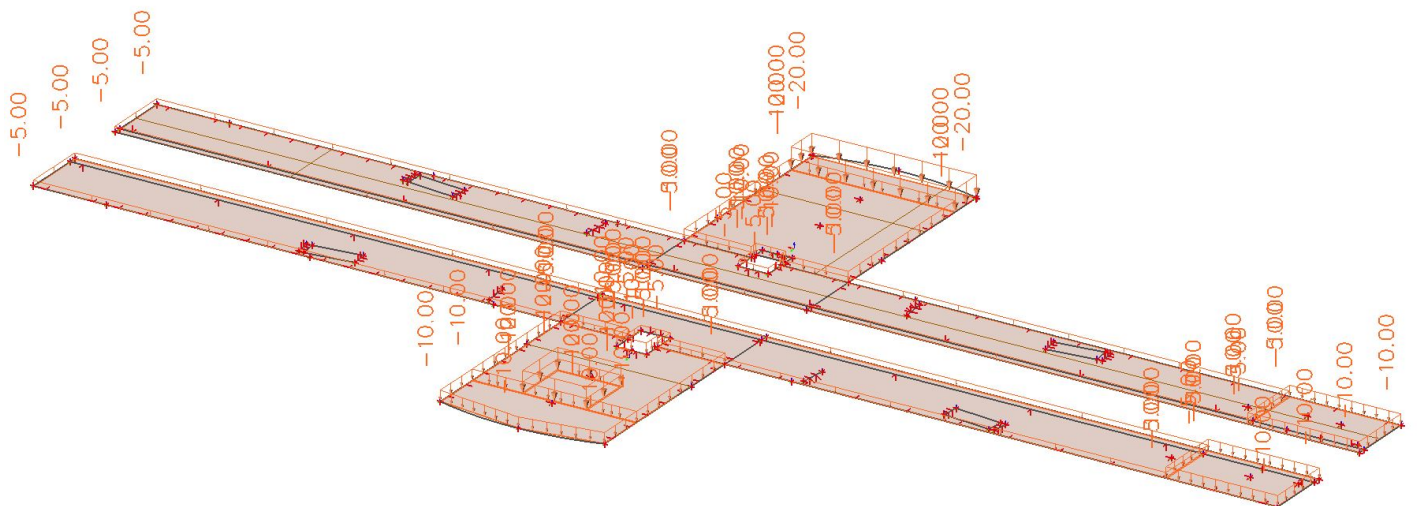
Project Estação de Campo de Ourique

7.3. Imposed Load / Tot. value

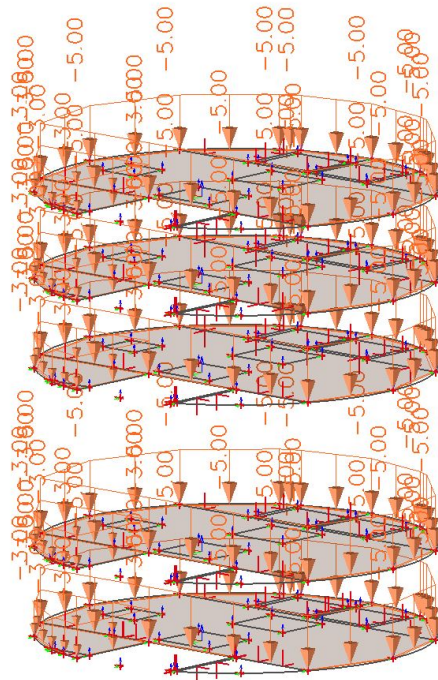


Project Estação de Campo de Ourique

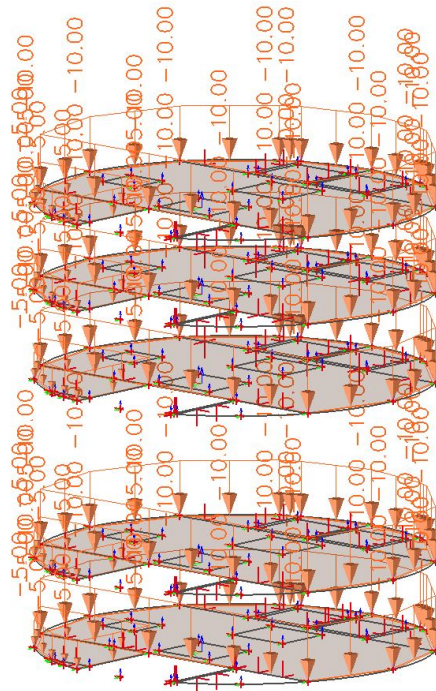
7.4. Imposed Load / Tot. value



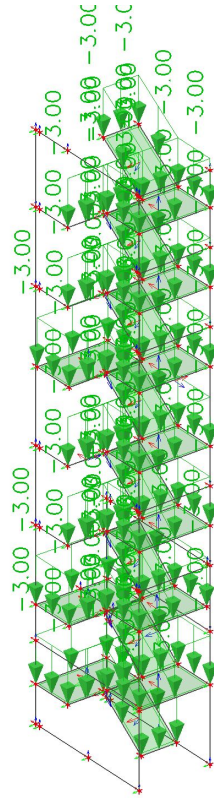
7.5. Additional Permanent / Tot. value



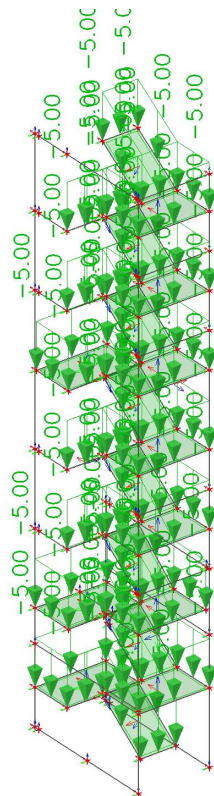
7.6. Imposed Load / Tot. value



7.7. Additional Permanent / Tot. value

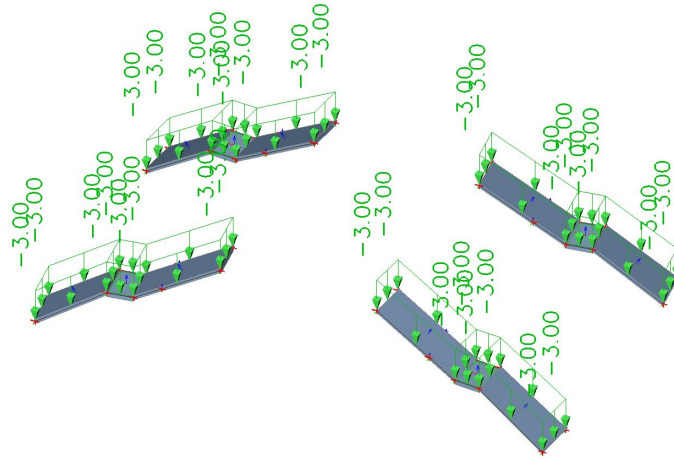


7.8. Imposed Load / Tot. value

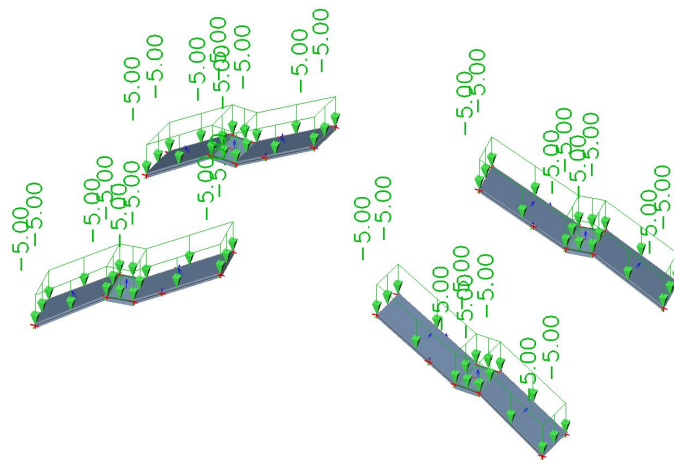


Project Estação de Campo de Ourique

7.9. Additional Permanent / Tot. value

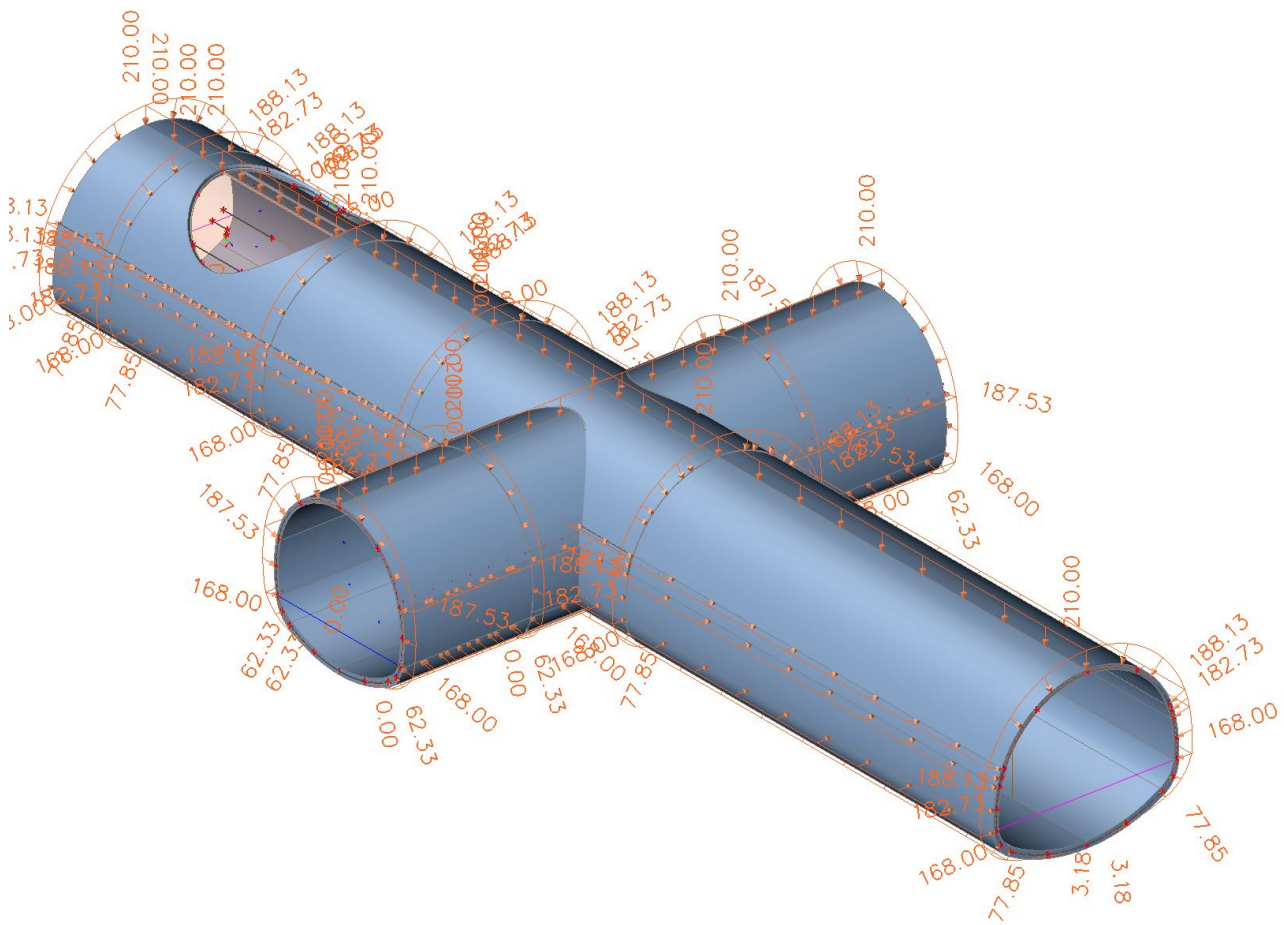


7.10. Imposed Load / Tot. value

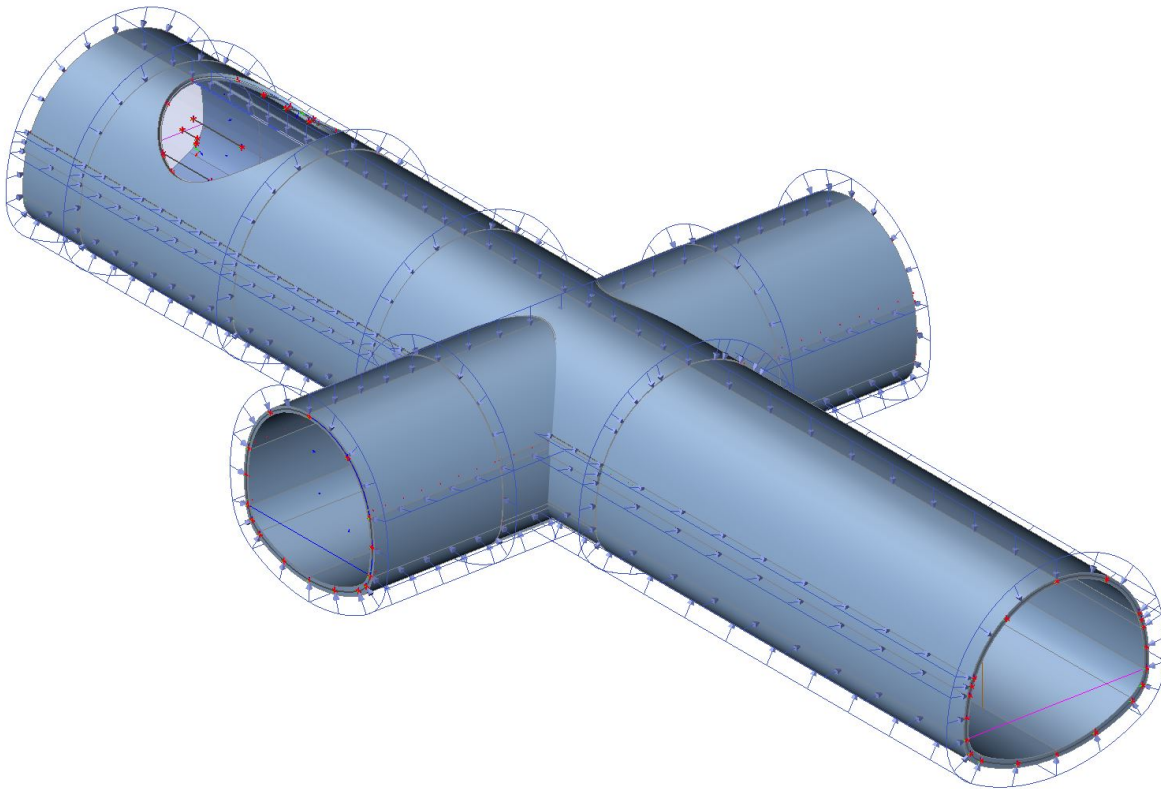


Project Estação de Campo de Ourique

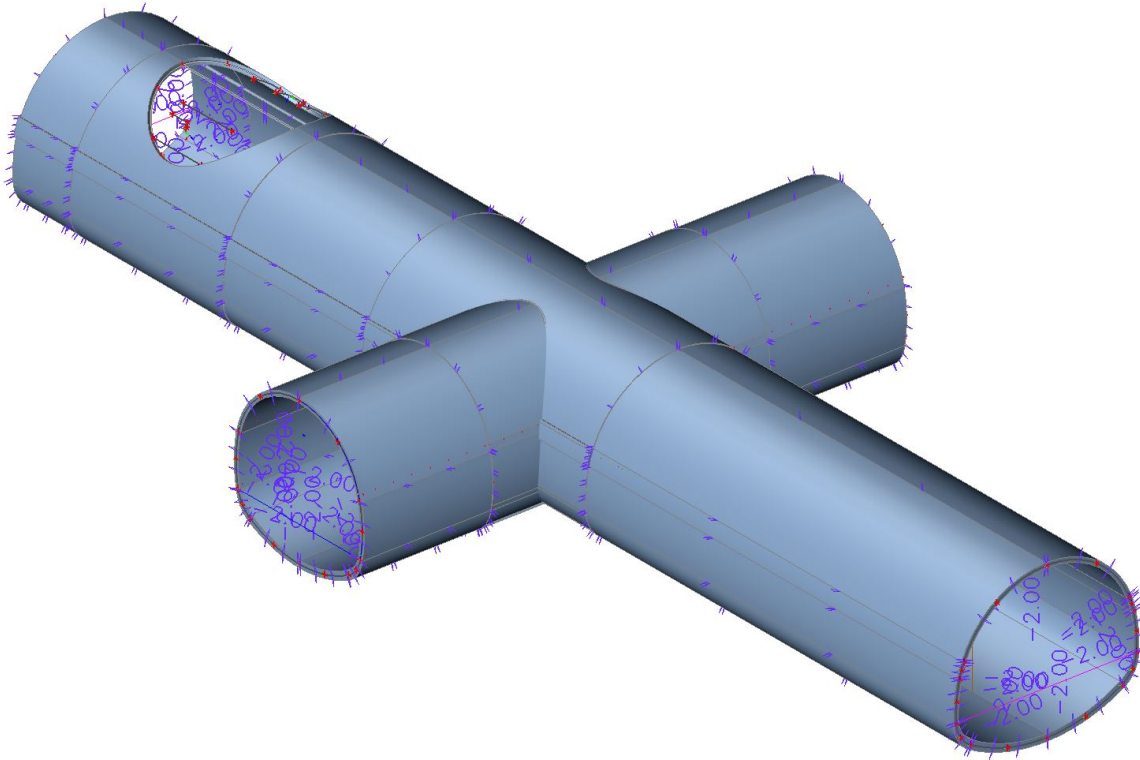
7.11. Soil Prs / Tot. value



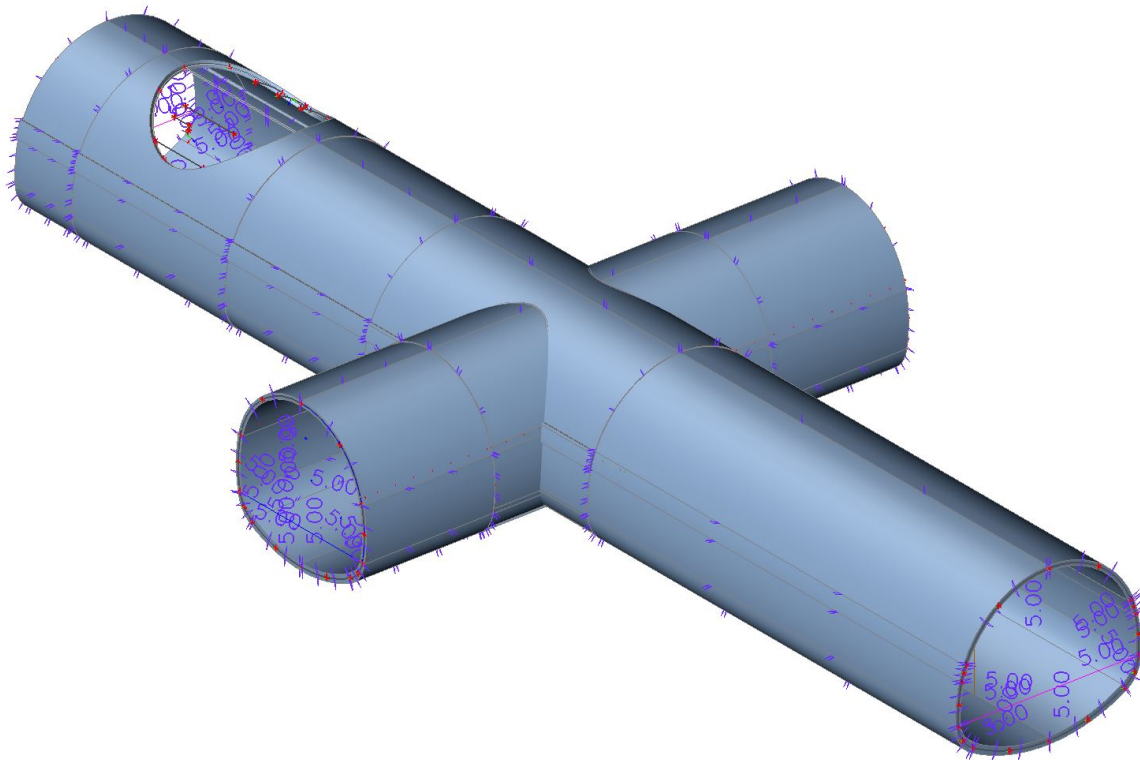
7.12. Water / Tot. value



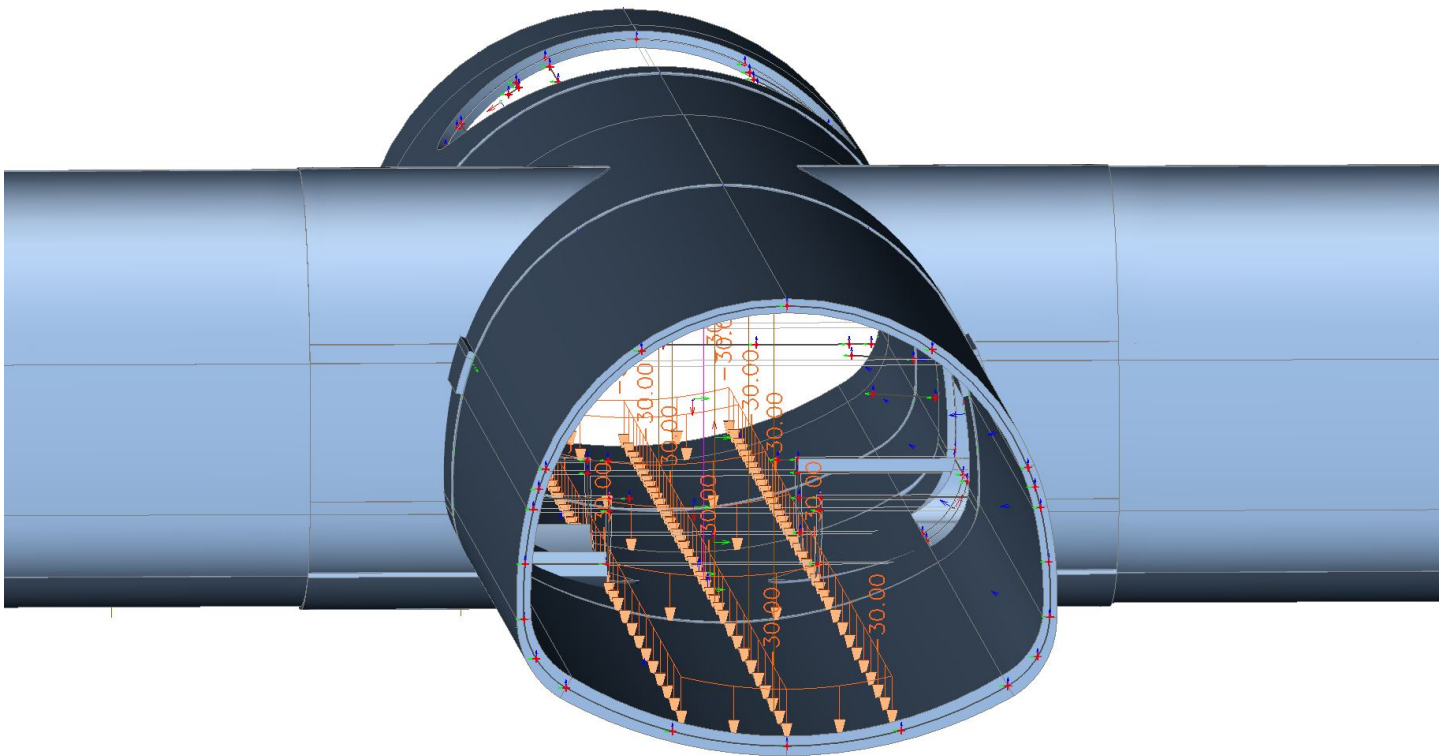
7.13. Temp1 / Tot. value



7.14. Temp2 / Tot. value



7.15. Railway Train / Tot. value

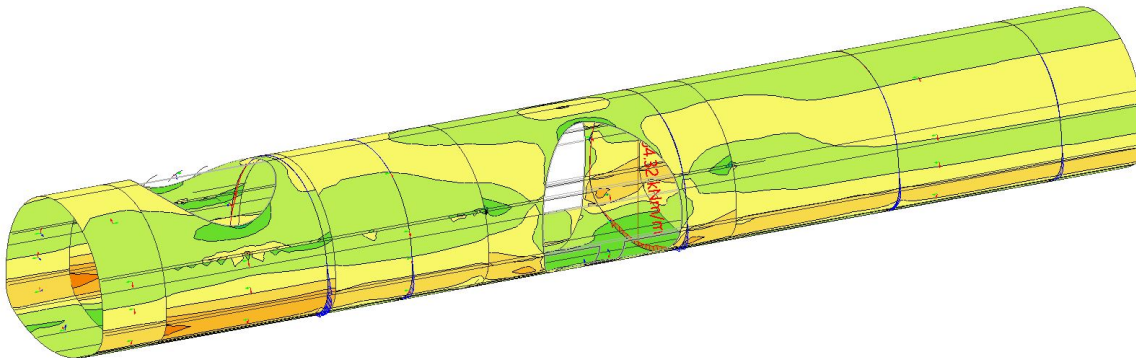
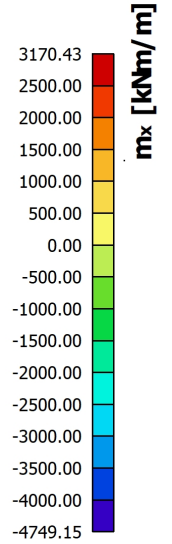


8. Results of Forces and Moments

8.1. Result picture generator

8.1.1. 2D internal forces; - m_x

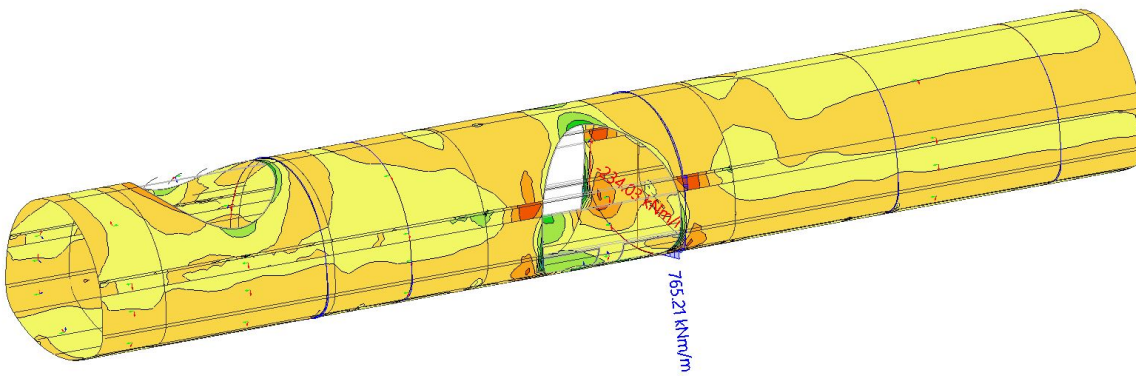
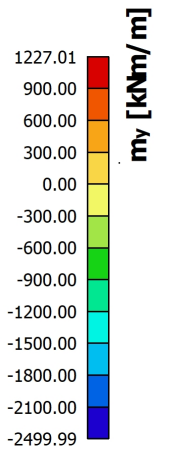
Values: m_x
 Nonlinear calculation
 Class: ULS
 Extreme: Global
 Selection: Named selection - T3
 Location: In nodes avg. on macro.
 System: LCS mesh element



Project **Estação de Campo de Ourique**

8.1.2. 2D internal forces; - m_y

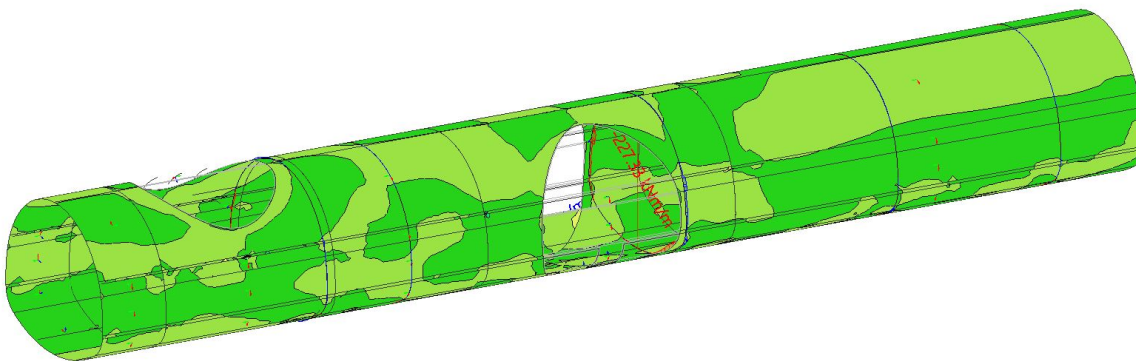
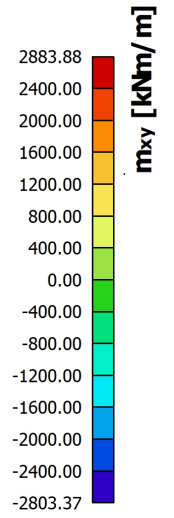
Values: m_y
 Nonlinear calculation
 Class: ULS
 Extreme: Global
 Selection: Named selection - T3
 Location: In nodes avg. on macro.
 System: LCS mesh element



Project **Estação de Campo de Ourique**

8.1.3. 2D internal forces; - m_{xy}

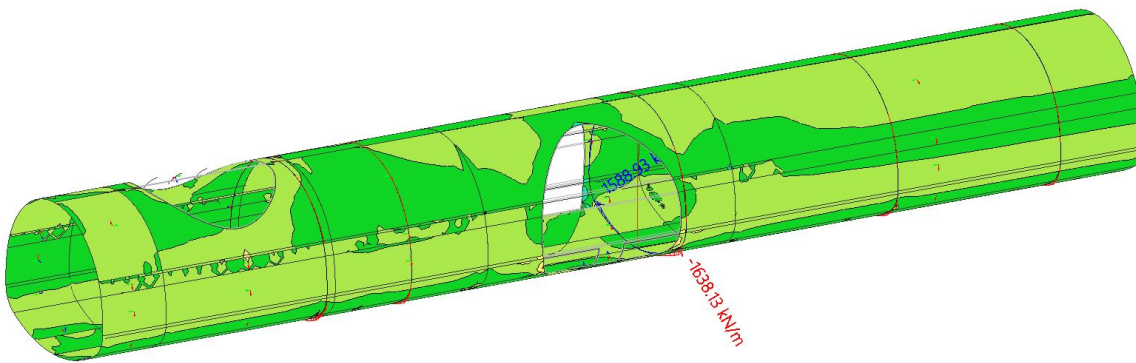
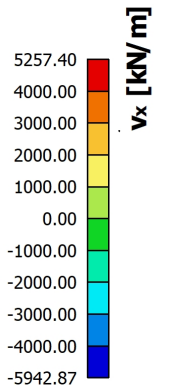
Values: **m_{xy}**
 Nonlinear calculation
 Class: ULS
 Extreme: Global
 Selection: Named selection - T3
 Location: In nodes avg. on macro.
 System: LCS mesh element



Project **Estação de Campo de Ourique**

8.1.4. 2D internal forces; - v_x

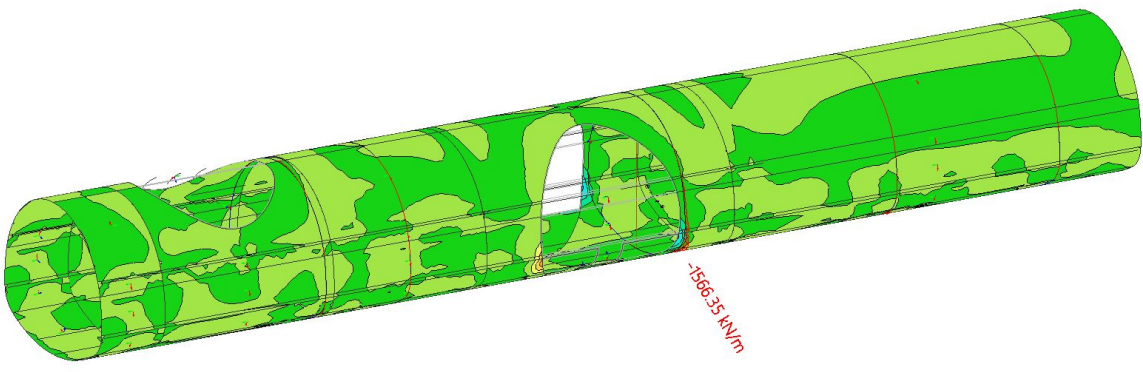
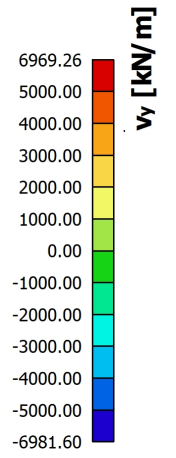
Values: v_x
 Nonlinear calculation
 Class: ULS
 Extreme: Global
 Selection: Named selection - T3
 Location: In nodes avg. on macro.
 System: LCS mesh element



Project **Estação de Campo de Ourique**

8.1.5. 2D internal forces; - v_y

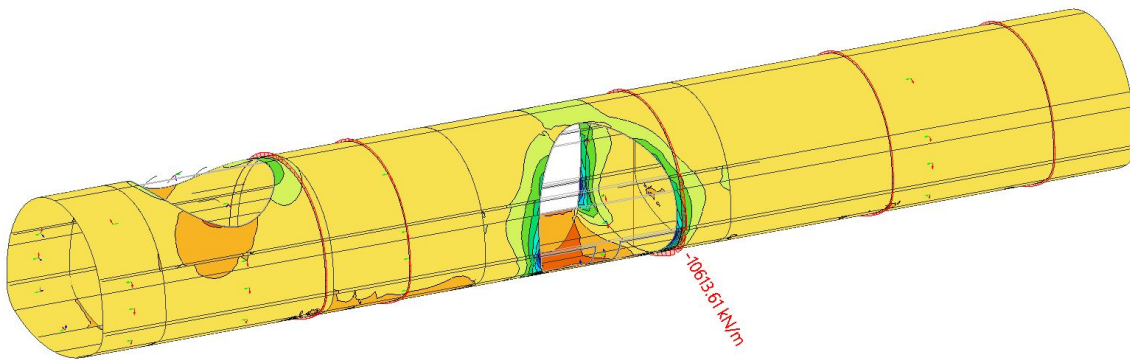
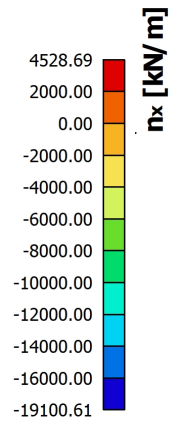
Values: v_y
 Nonlinear calculation
 Class: ULS
 Extreme: Global
 Selection: Named selection - T3
 Location: In nodes avg. on macro.
 System: LCS mesh element



Project **Estação de Campo de Ourique**

8.1.6. 2D internal forces; - n_x

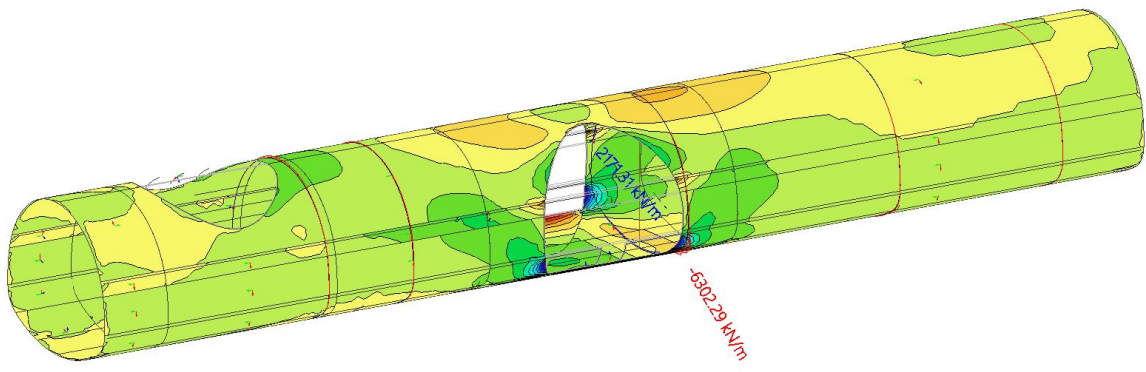
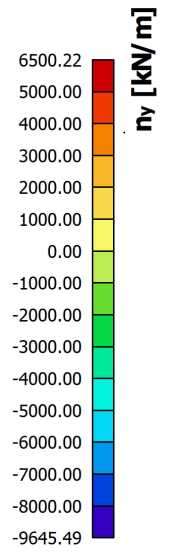
Values: n_x
 Nonlinear calculation
 Class: ULS
 Extreme: Global
 Selection: Named selection - T3
 Location: In nodes avg. on macro.
 System: LCS mesh element



Project **Estação de Campo de Ourique**

8.1.7. 2D internal forces; - n_y

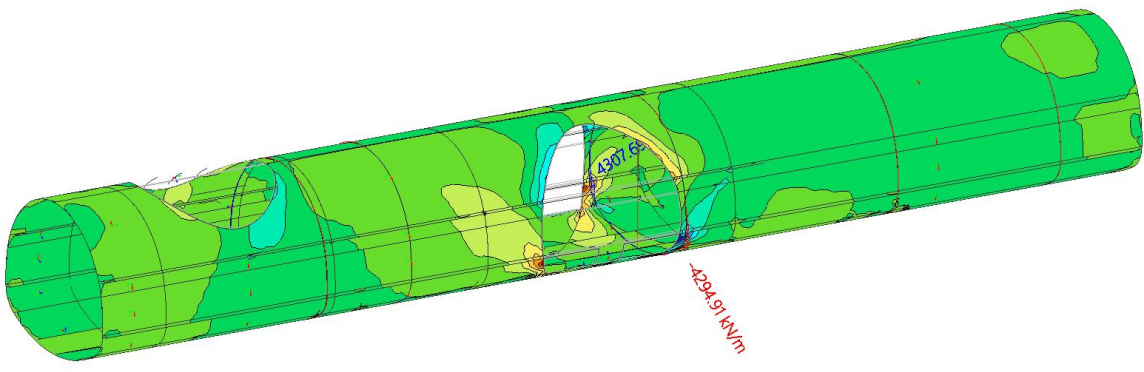
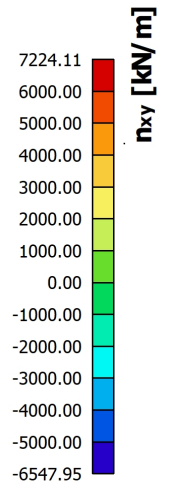
Values: n_y
 Nonlinear calculation
 Class: ULS
 Extreme: Global
 Selection: Named selection - T3
 Location: In nodes avg. on macro.
 System: LCS mesh element



Project **Estação de Campo de Ourique**

8.1.8. 2D internal forces; - n_{xy}

Values: n_{xy}
 Nonlinear calculation
 Class: ULS
 Extreme: Global
 Selection: Named selection - T3
 Location: In nodes avg. on macro.
 System: LCS mesh element

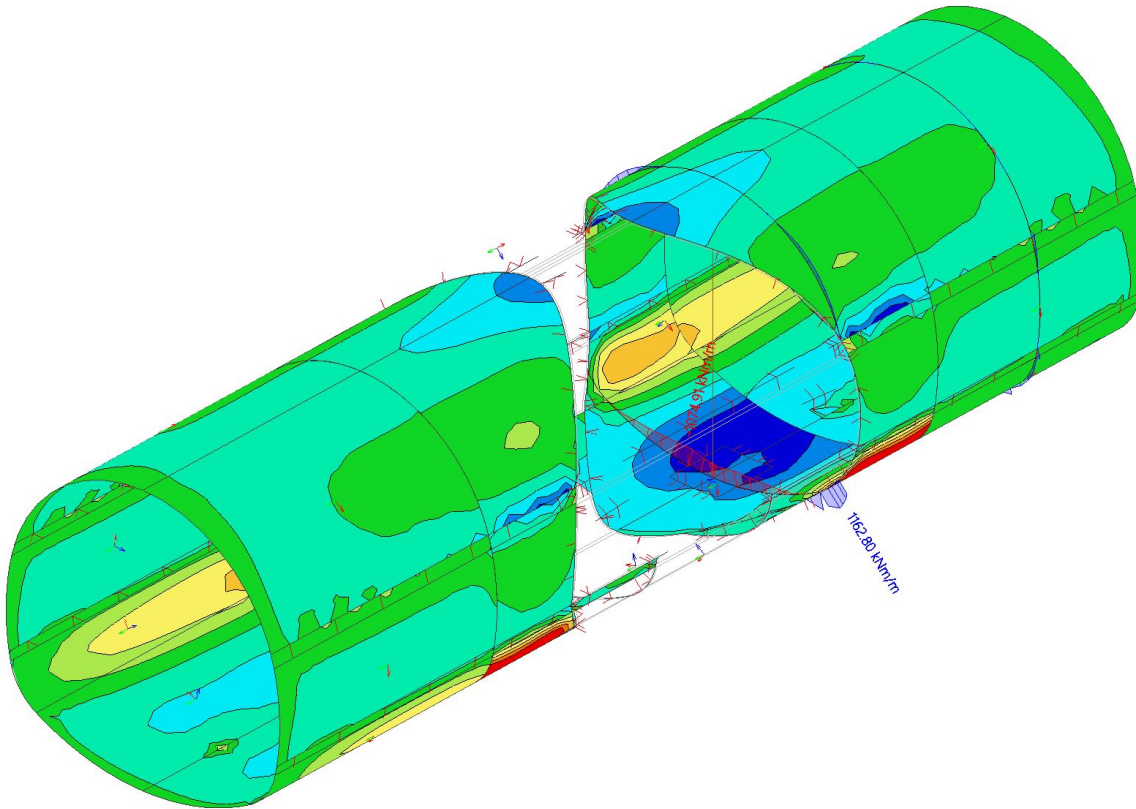
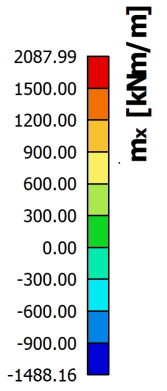


Project Estação de Campo de Ourique

8.2. Result picture generator

8.2.1. 2D internal forces; - m_x

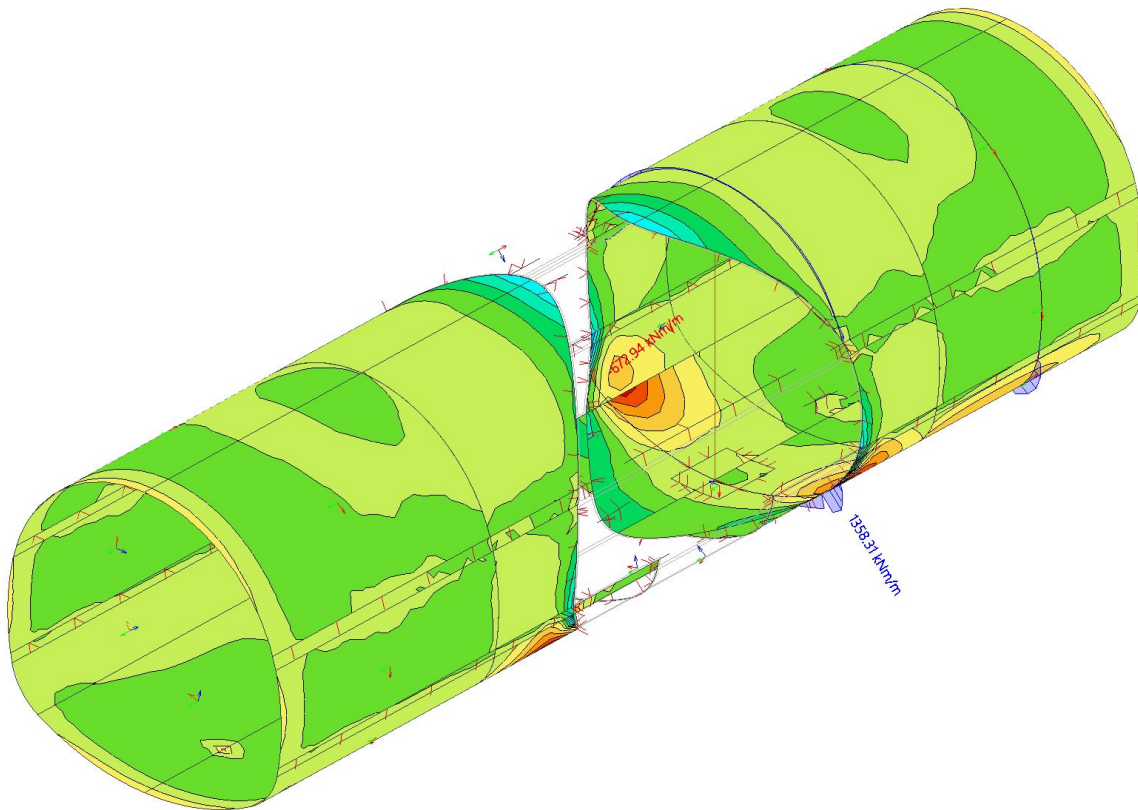
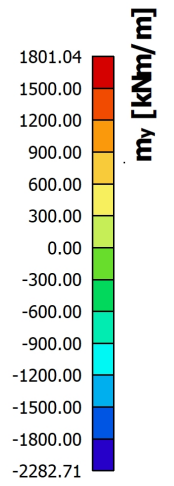
Values: m_x
 Nonlinear calculation
 Class: ULS
 Extreme: Global
 Selection: Named selection - T2
 Location: In nodes avg. on macro.
 System: LCS mesh element



Project **Estação de Campo de Ourique**

8.2.2. 2D internal forces; - m_y

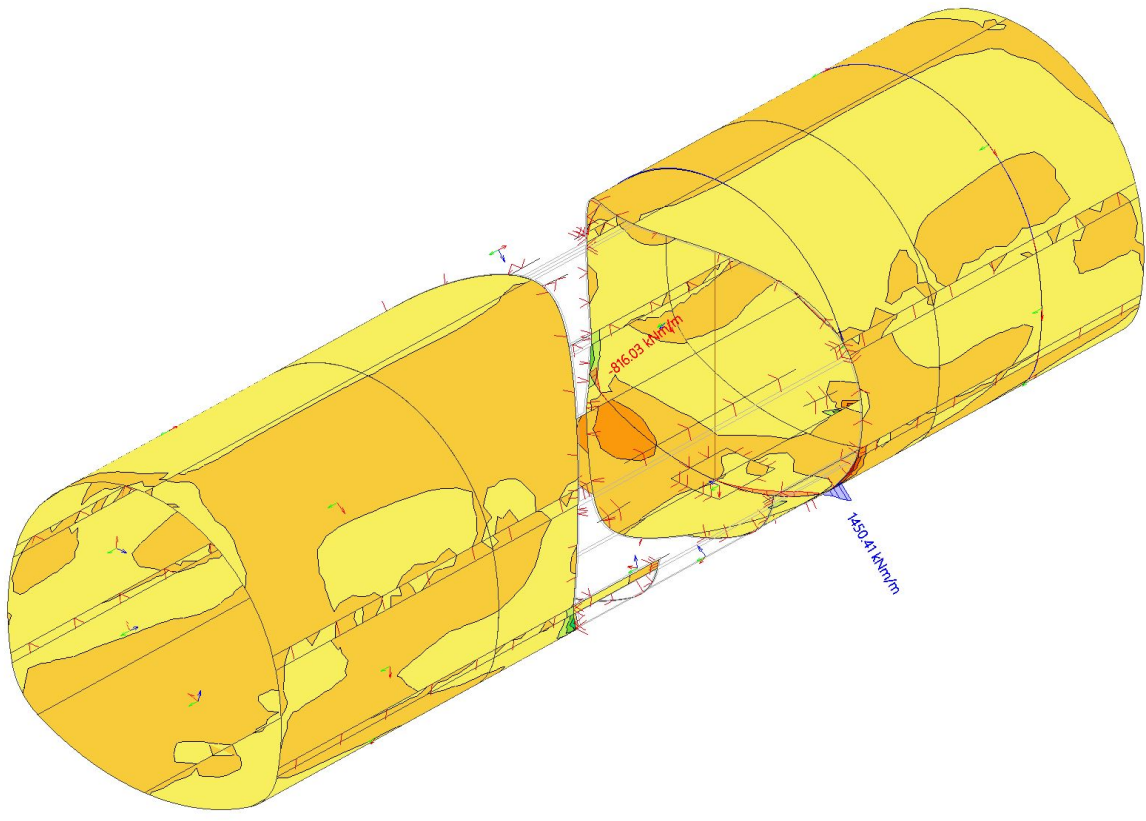
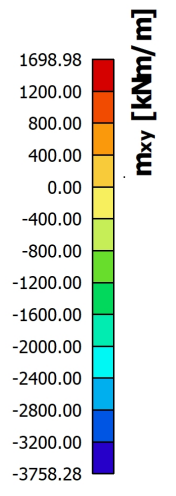
Values: m_y
 Nonlinear calculation
 Class: ULS
 Extreme: Global
 Selection: Named selection - T2
 Location: In nodes avg. on macro.
 System: LCS mesh element



Project **Estação de Campo de Ourique**

8.2.3. 2D internal forces; - m_{xy}

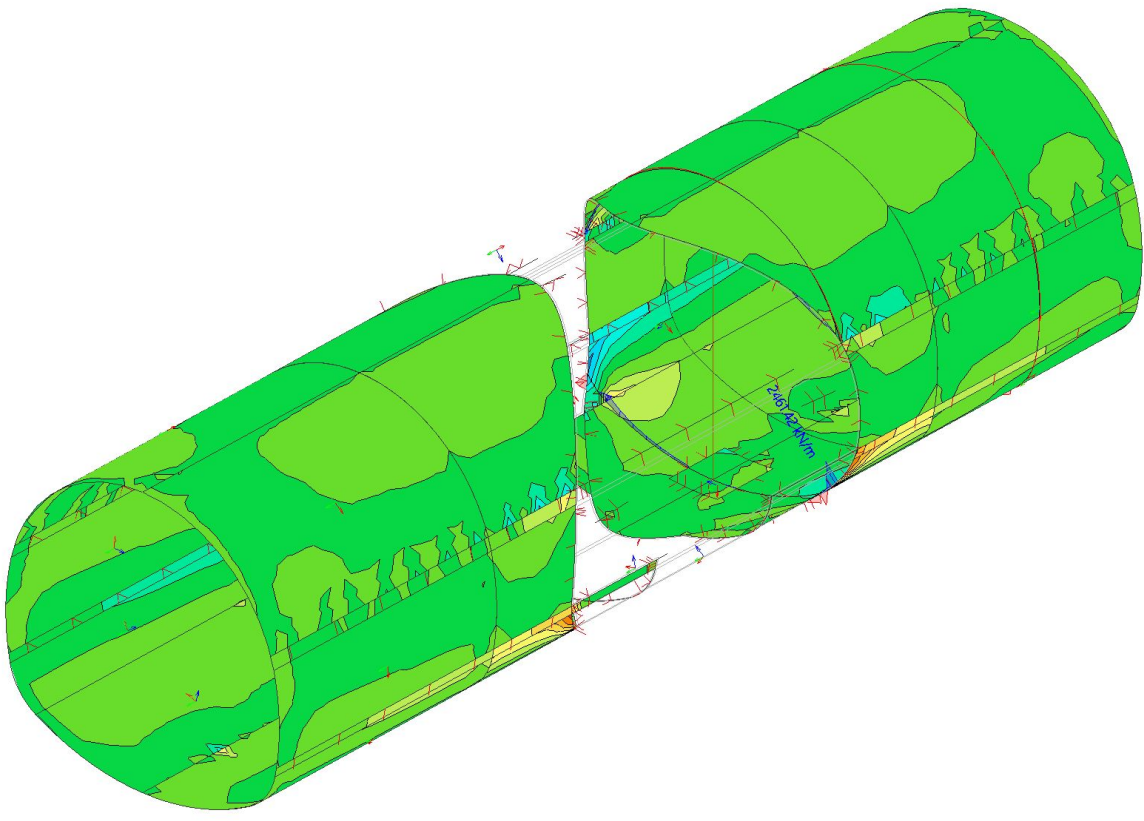
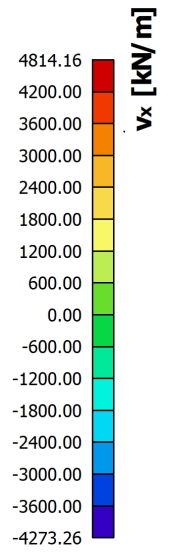
Values: **m_{xy}**
 Nonlinear calculation
 Class: ULS
 Extreme: Global
 Selection: Named selection - T2
 Location: In nodes avg. on macro.
 System: LCS mesh element



Project **Estação de Campo de Ourique**

8.2.4. 2D internal forces; - v_x

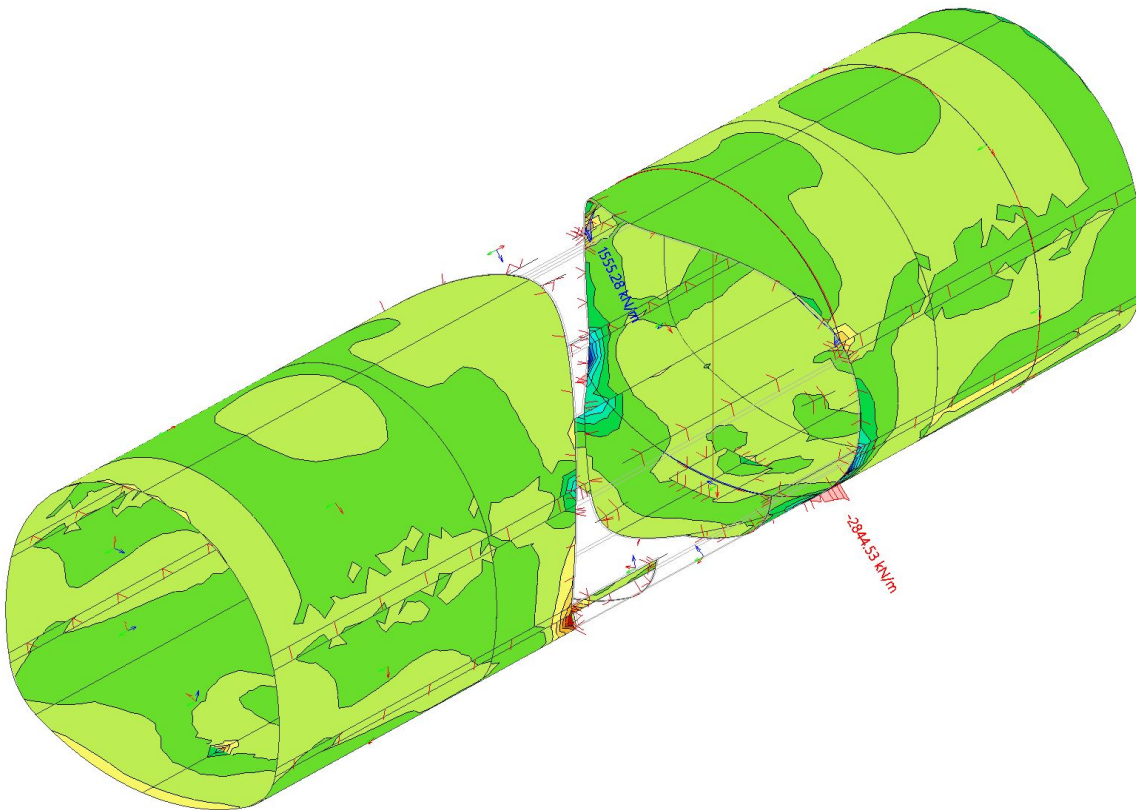
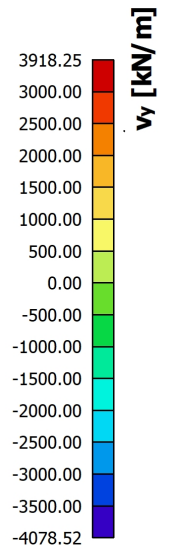
Values: v_x
 Nonlinear calculation
 Class: ULS
 Extreme: Global
 Selection: Named selection - T2
 Location: In nodes avg. on macro.
 System: LCS mesh element



Project **Estação de Campo de Ourique**

8.2.5. 2D internal forces; - v_y

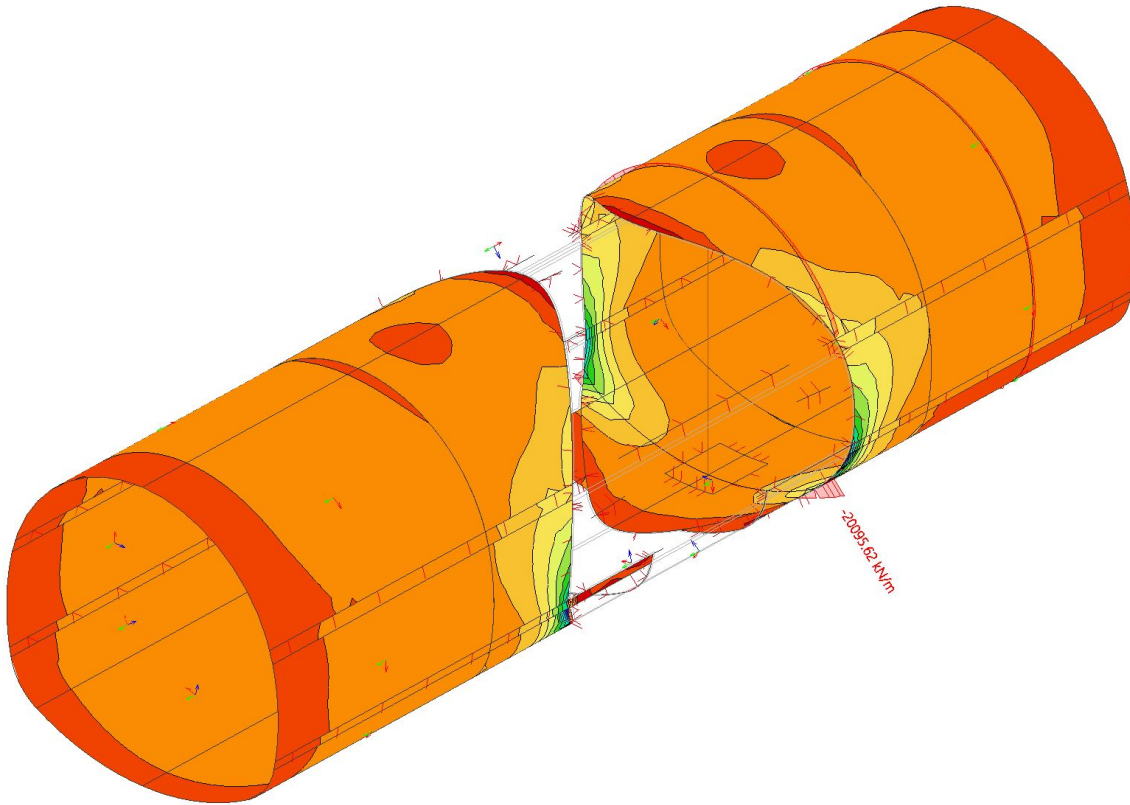
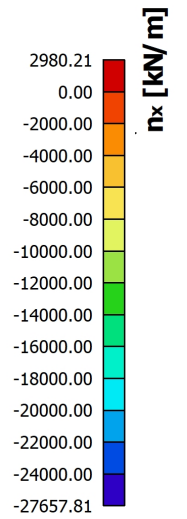
Values: v_y
 Nonlinear calculation
 Class: ULS
 Extreme: Global
 Selection: Named selection - T2
 Location: In nodes avg. on macro.
 System: LCS mesh element



Project **Estação de Campo de Ourique**

8.2.6. 2D internal forces; - n_x

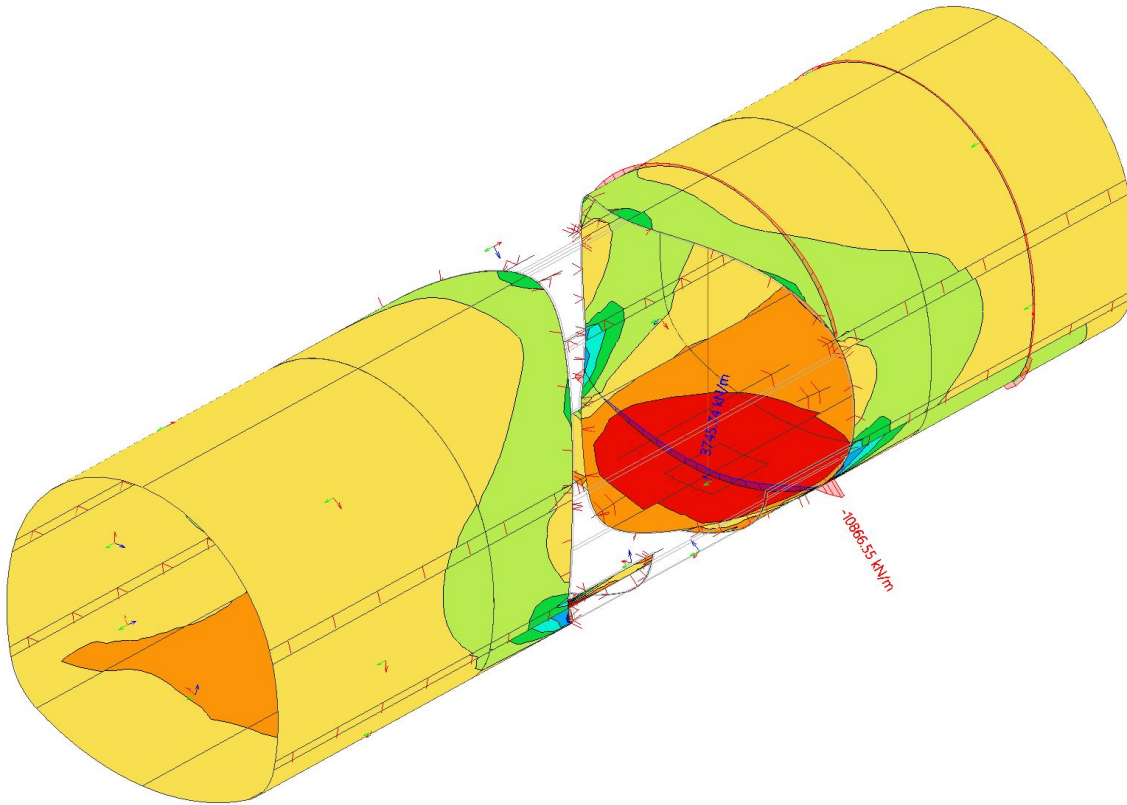
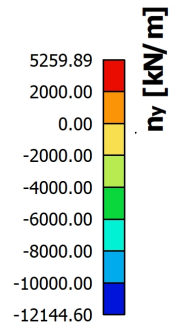
Values: n_x
 Nonlinear calculation
 Class: ULS
 Extreme: Global
 Selection: Named selection - T2
 Location: In nodes avg. on macro.
 System: LCS mesh element



Project **Estação de Campo de Ourique**

8.2.7. 2D internal forces; - n_y

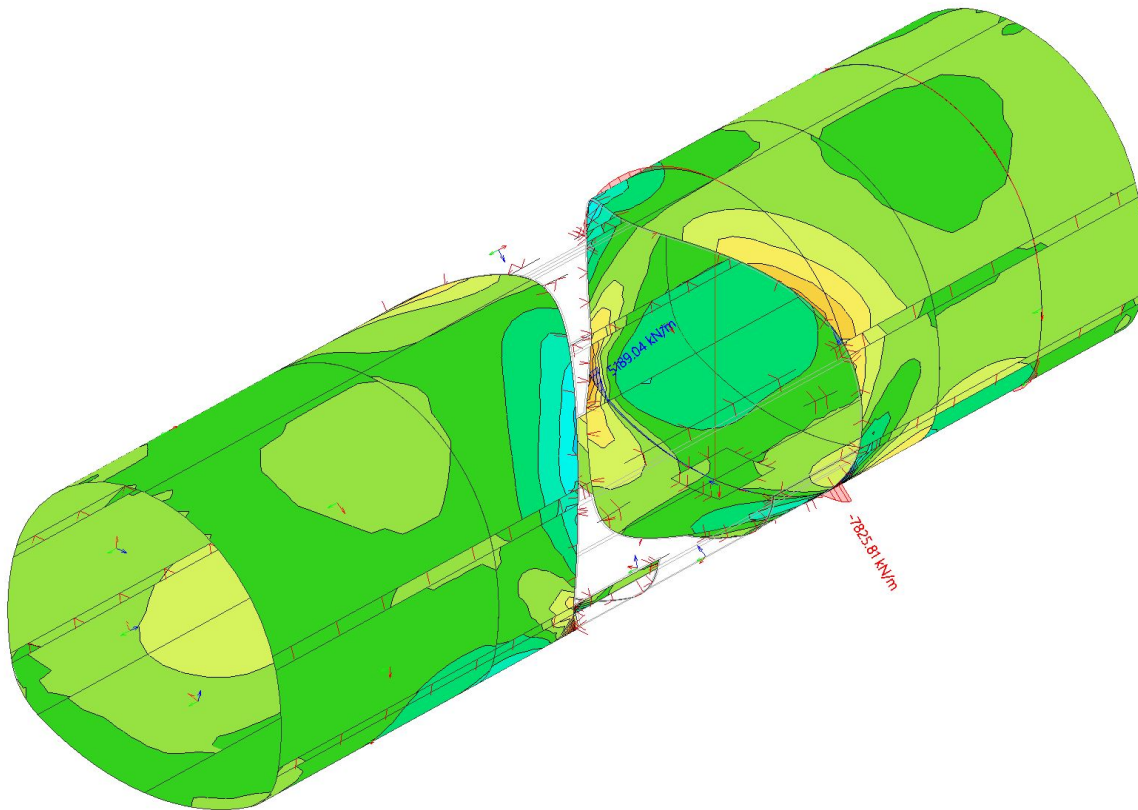
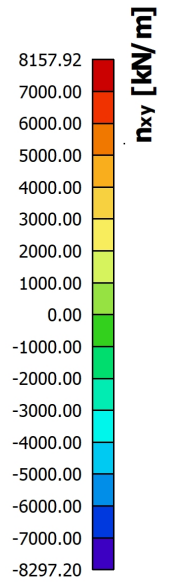
Values: n_y
 Nonlinear calculation
 Class: ULS
 Extreme: Global
 Selection: Named selection - T2
 Location: In nodes avg. on macro.
 System: LCS mesh element



Project **Estação de Campo de Ourique**

8.2.8. 2D internal forces; - n_{xy}

Values: n_{xy}
 Nonlinear calculation
 Class: ULS
 Extreme: Global
 Selection: Named selection - T2
 Location: In nodes avg. on macro.
 System: LCS mesh element

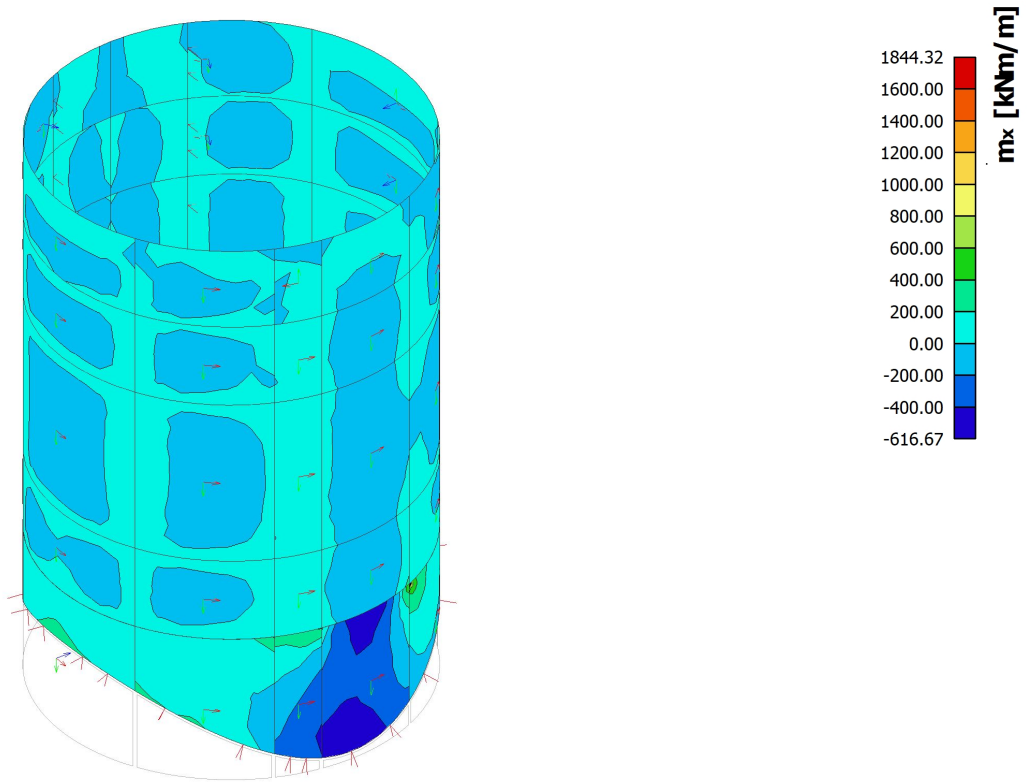


Project **Estação de Campo de Ourique**

8.3. Result picture generator

8.3.1. 2D internal forces; - m_x

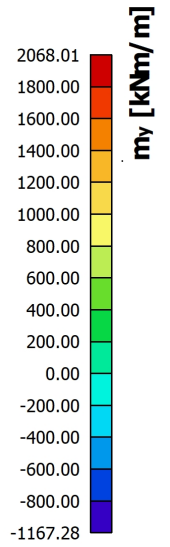
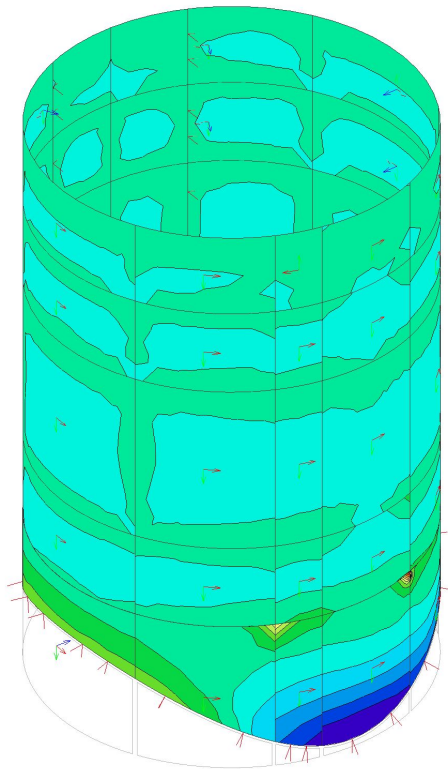
Values: m_x
 Nonlinear calculation
 Class: ULS
 Extreme: Global
 Selection: Named selection - T1
 Location: In nodes avg. on macro.
 System: LCS mesh element



Project **Estação de Campo de Ourique**

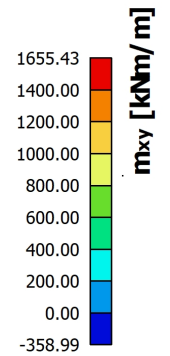
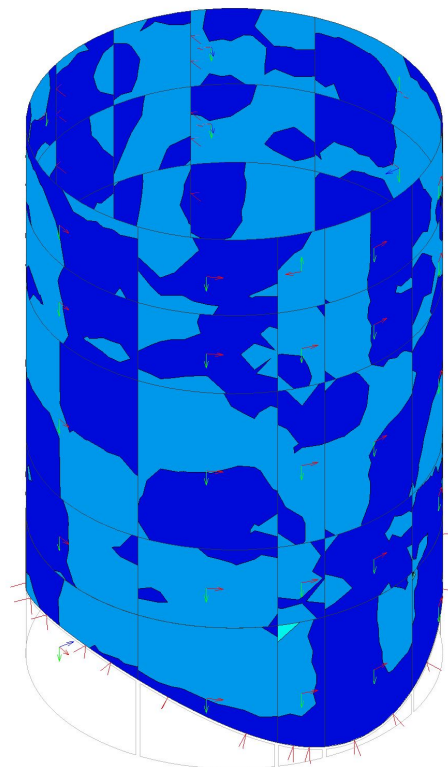
8.3.2. 2D internal forces; - m_y

Values: **m_y**
 Nonlinear calculation
 Class: ULS
 Extreme: Global
 Selection: Named selection - T1
 Location: In nodes avg. on macro.
 System: LCS mesh element



8.3.3. 2D internal forces; - m_{xy}

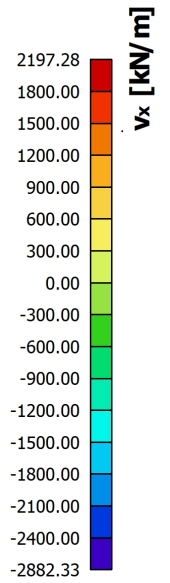
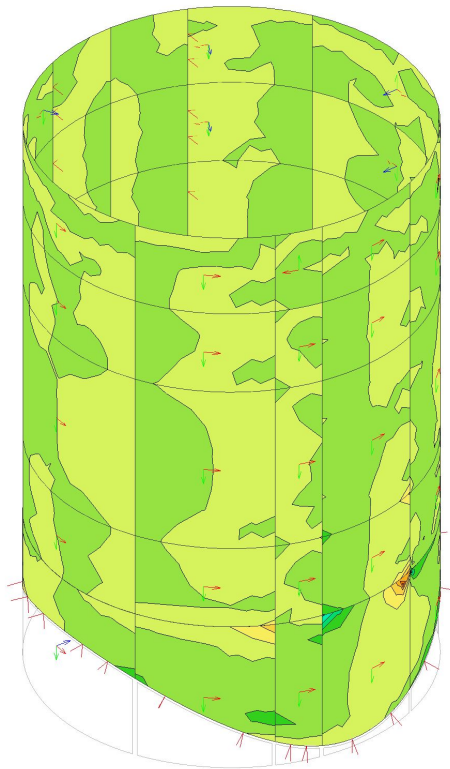
Values: **m_{xy}**
 Nonlinear calculation
 Class: ULS
 Extreme: Global
 Selection: Named selection - T1
 Location: In nodes avg. on macro.
 System: LCS mesh element



Project **Estação de Campo de Ourique**

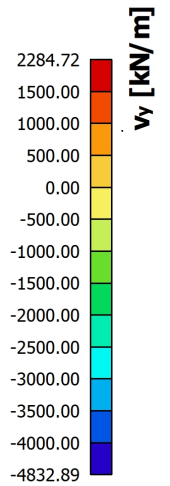
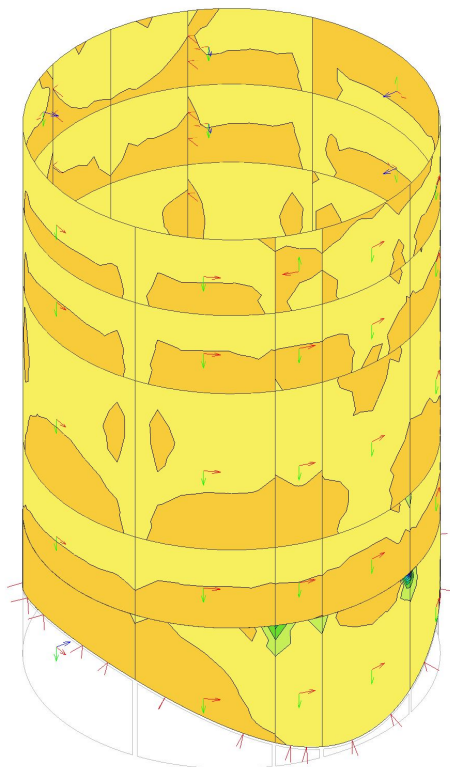
8.3.4. 2D internal forces; - v_x

Values: v_x
 Nonlinear calculation
 Class: ULS
 Extreme: Global
 Selection: Named selection - T1
 Location: In nodes avg. on macro.
 System: LCS mesh element



8.3.5. 2D internal forces; - v_y

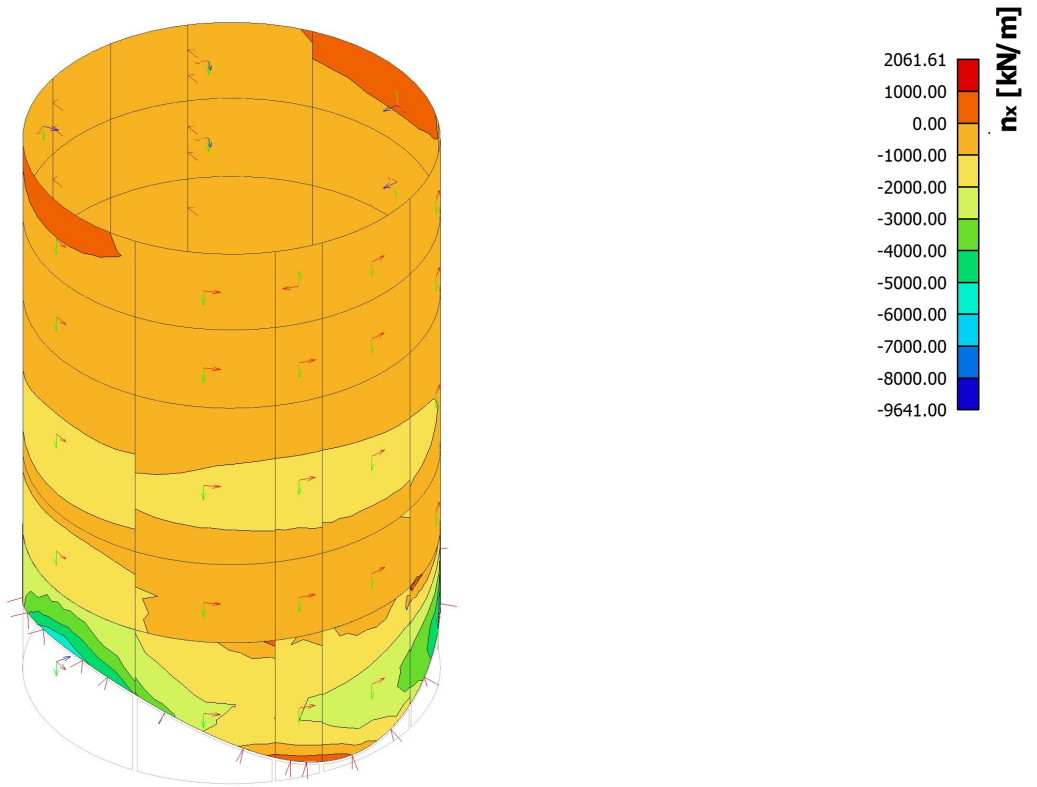
Values: v_y
 Nonlinear calculation
 Class: ULS
 Extreme: Global
 Selection: Named selection - T1
 Location: In nodes avg. on macro.
 System: LCS mesh element



Project **Estação de Campo de Ourique**

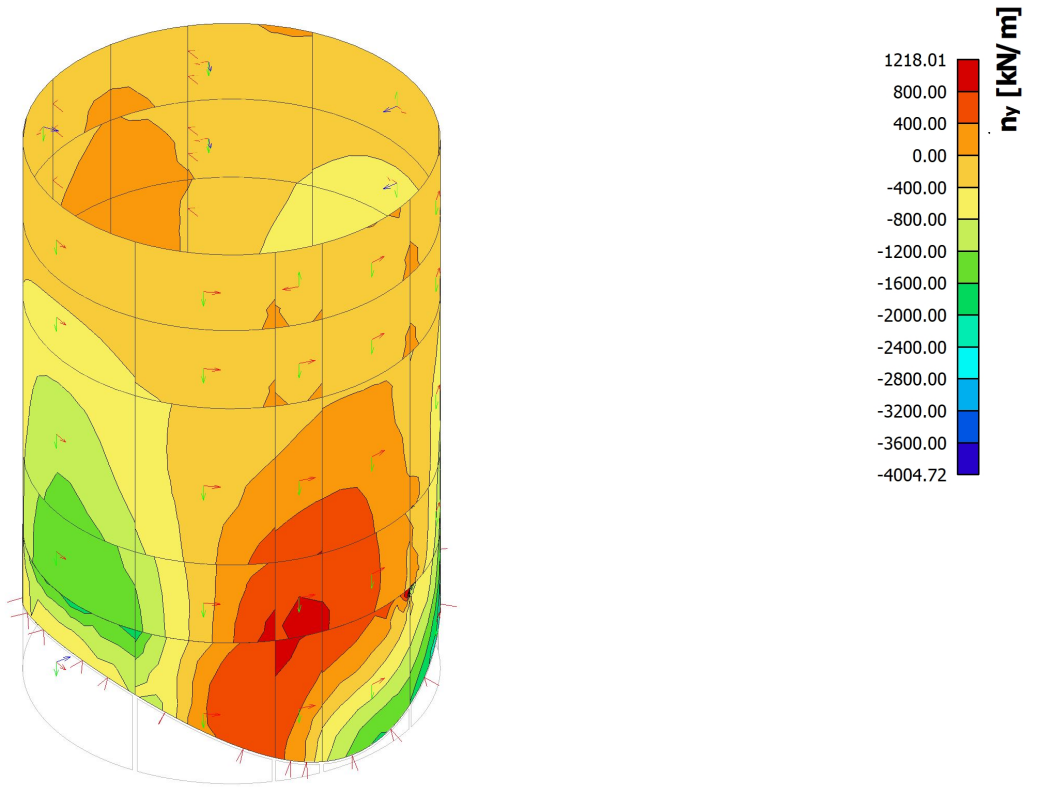
8.3.6. 2D internal forces; - n_x

Values: n_x
 Nonlinear calculation
 Class: ULS
 Extreme: Global
 Selection: Named selection - T1
 Location: In nodes avg. on macro.
 System: LCS mesh element



8.3.7. 2D internal forces; - n_y

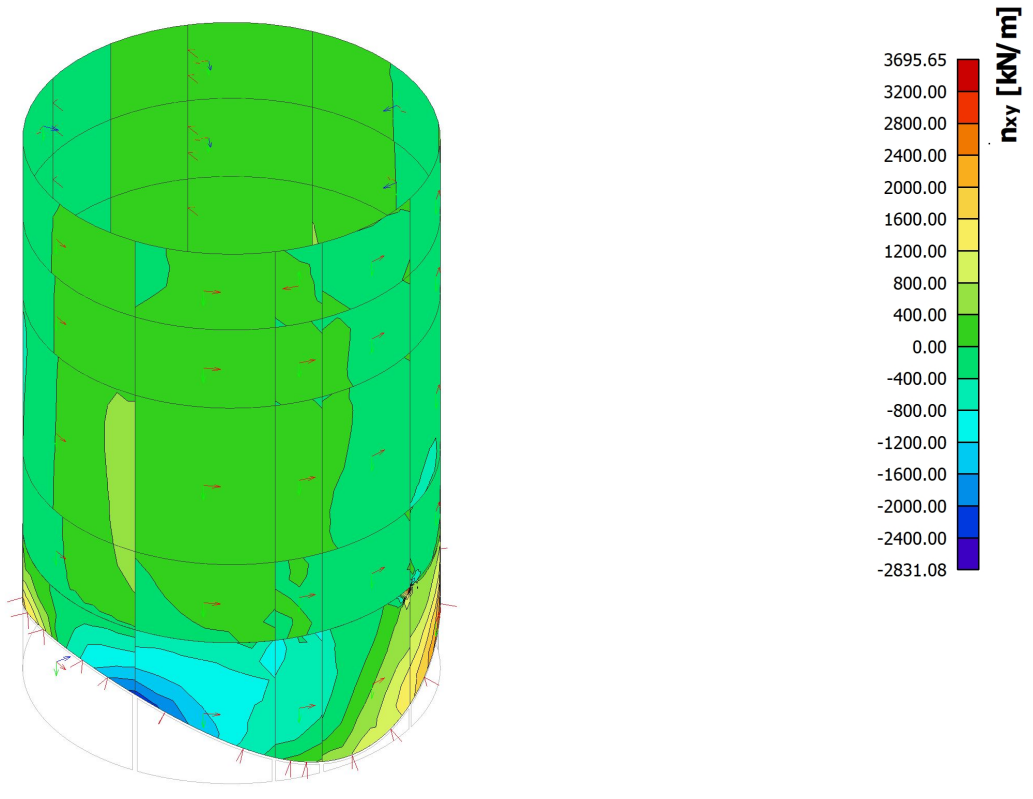
Values: n_y
 Nonlinear calculation
 Class: ULS
 Extreme: Global
 Selection: Named selection - T1
 Location: In nodes avg. on macro.
 System: LCS mesh element



Project **Estação de Campo de Ourique**

8.3.8. 2D internal forces; - n_{xy}

Values: **n_{xy}**
 Nonlinear calculation
 Class: ULS
 Extreme: Global
 Selection: Named selection - T1
 Location: In nodes avg. on macro.
 System: LCS mesh element

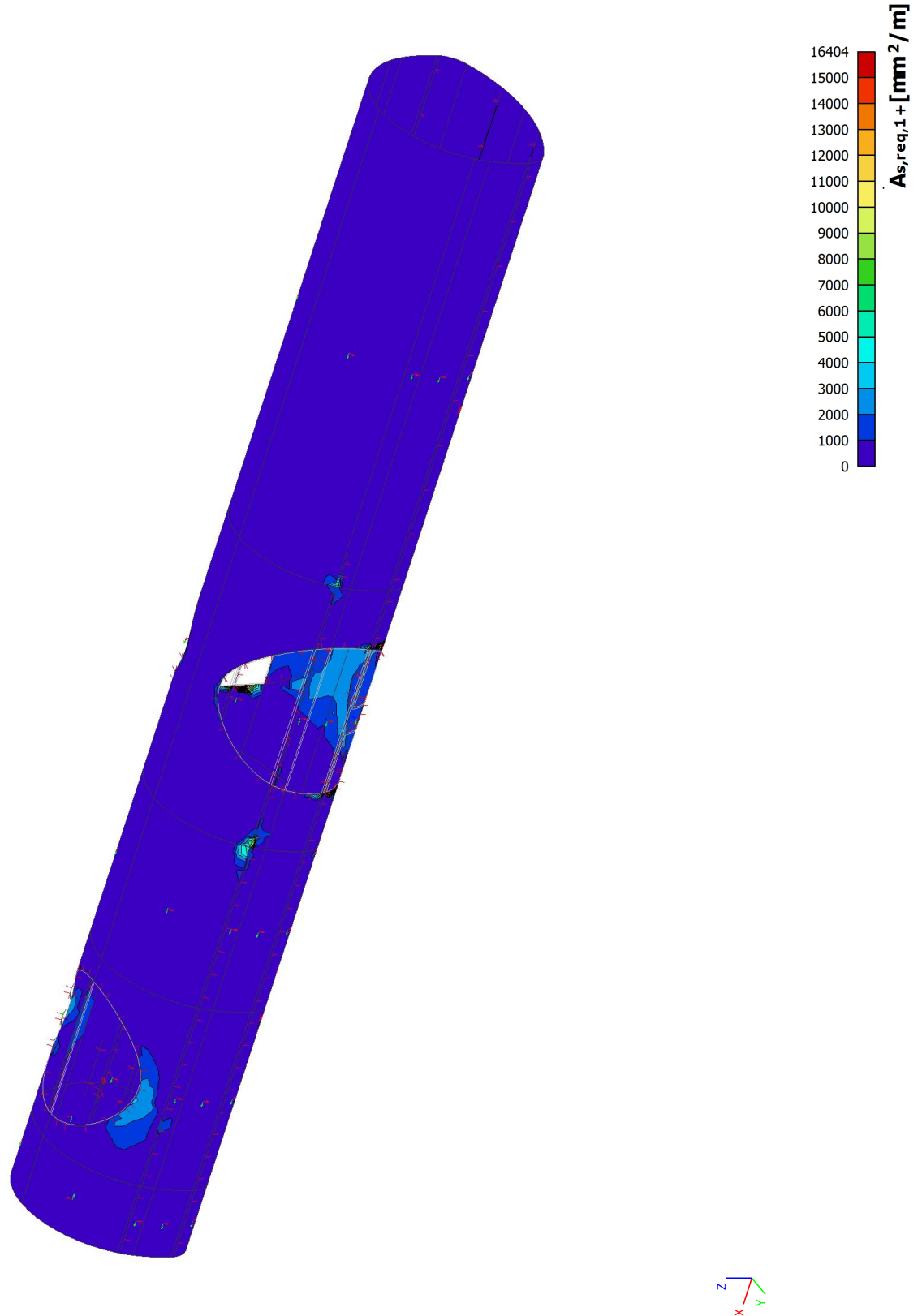


9. Reinforcement

9.1. Result picture generator

9.1.1. Reinforcement design (ULS+SLS); - $A_{s,req,1+}$

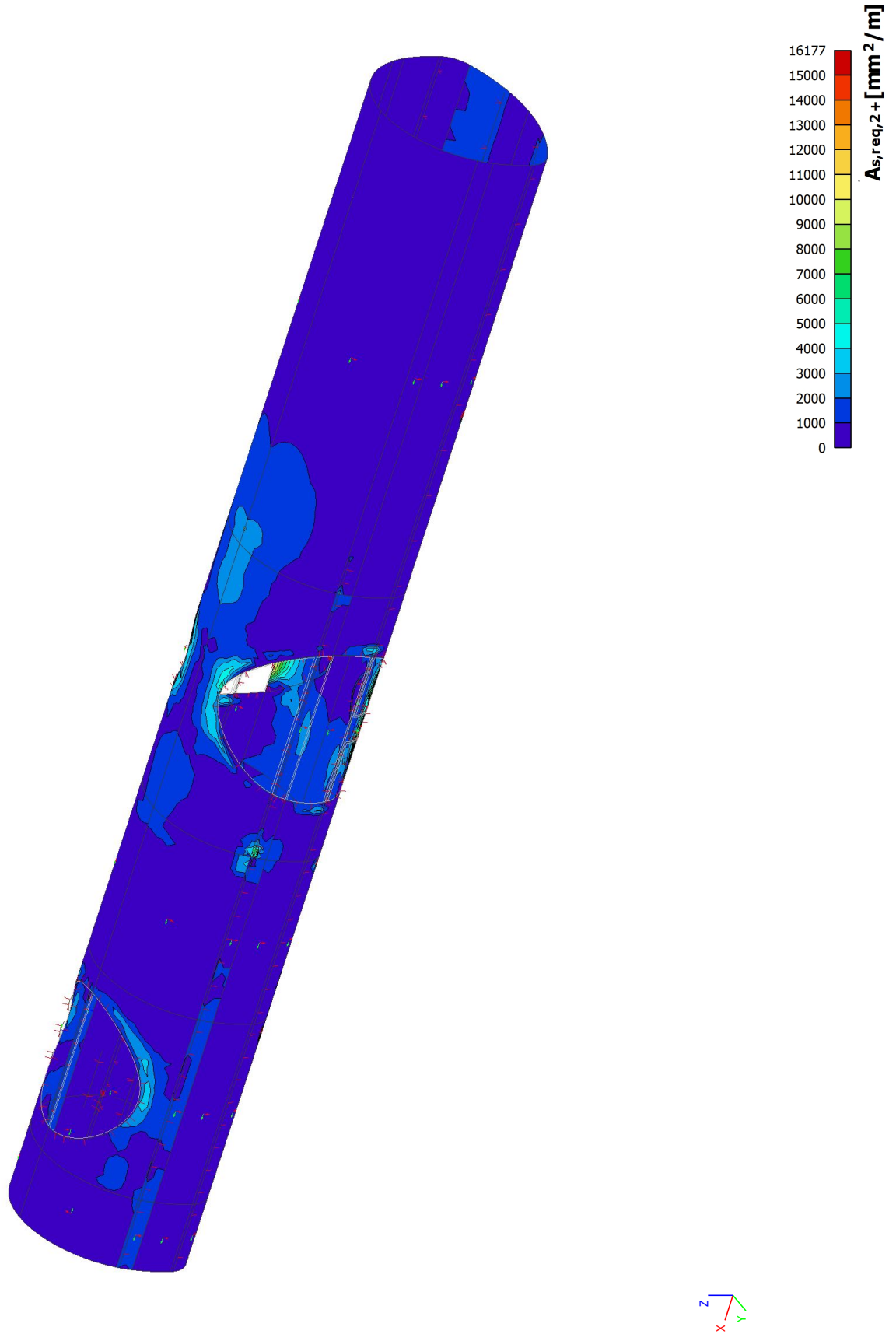
Values: $A_{s,req,1+}$
 Nonlinear calculation
 Class: ULS-SLS
 Extreme: Global
 Selection: Named selection - T3
 Location: In nodes avg.. System: LCS
 mesh element



Project Estação de Campo de Ourique

9.1.2. Reinforcement design (ULS+SLS); - $A_{s,req,2+}$

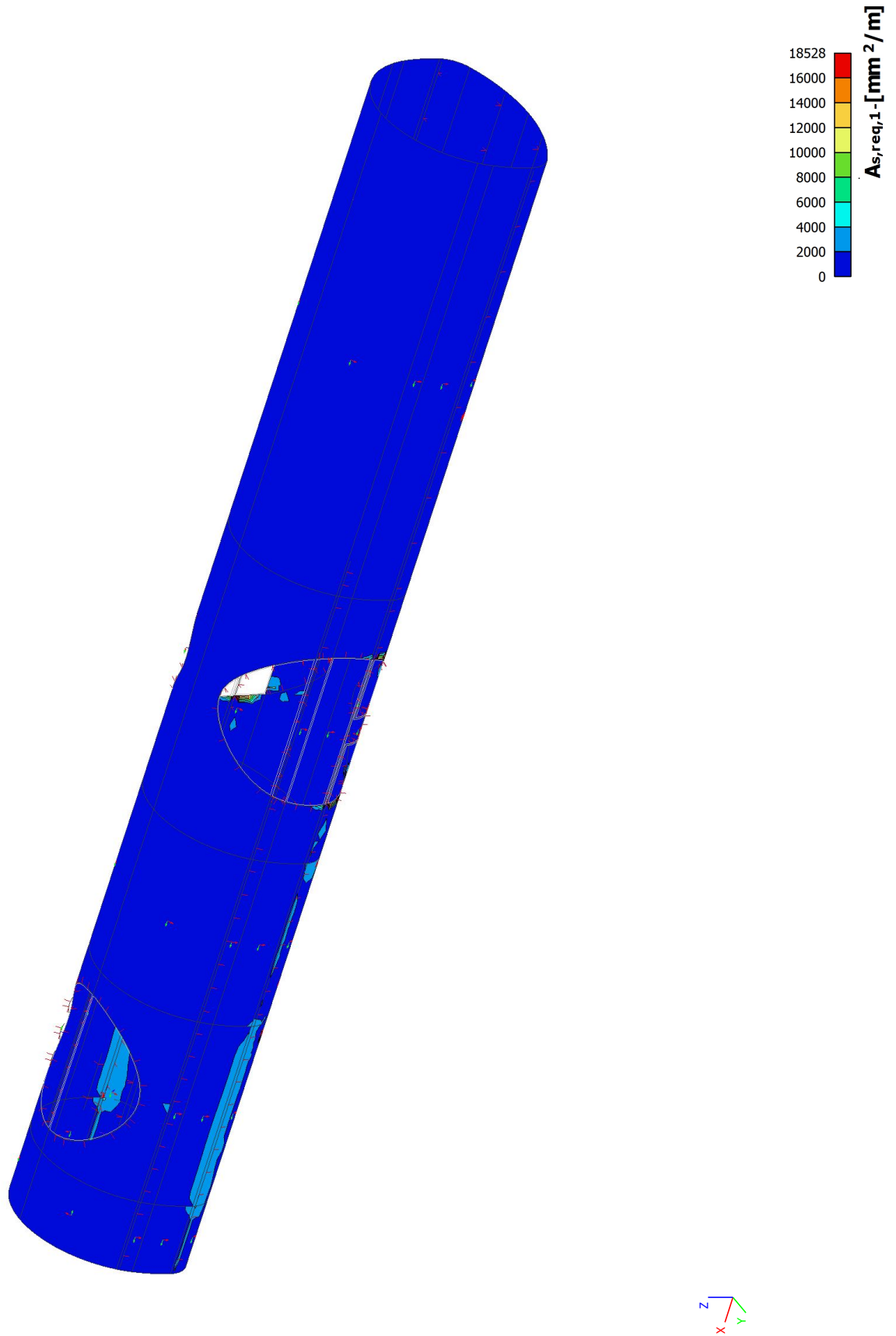
Values: $A_{s,req,2+}$
 Nonlinear calculation
 Class: ULS-SLS
 Extreme: Global
 Selection: Named selection - T3
 Location: In nodes avg.. System: LCS
 mesh element



Project **Estação de Campo de Ourique**

9.1.3. Reinforcement design (ULS+SLS); - $A_{s,req,1}$ -

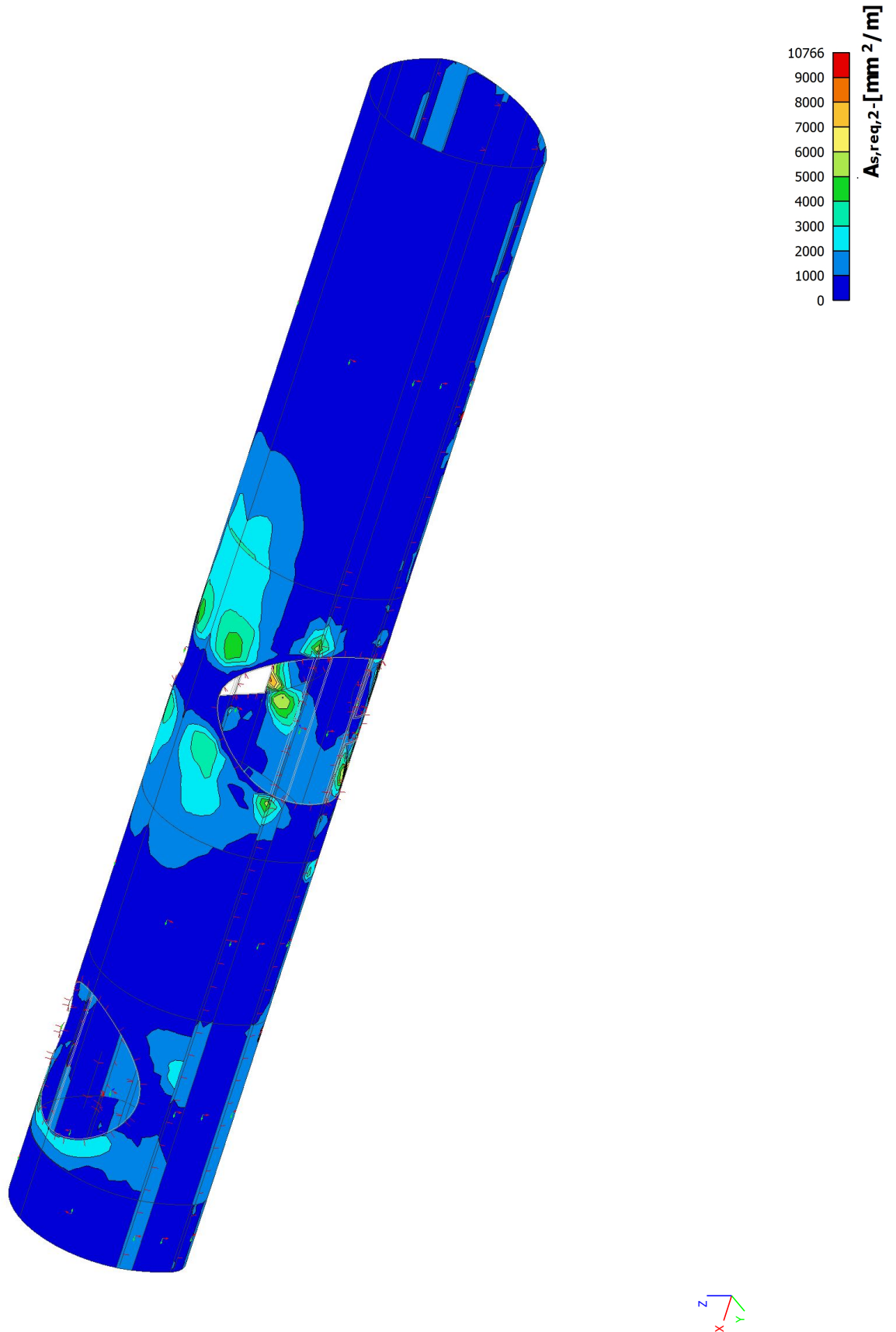
Values: $A_{s,req,1}$ -
 Nonlinear calculation
 Class: ULS-SLS
 Extreme: Global
 Selection: Named selection - T3
 Location: In nodes avg.. System: LCS
 mesh element



Project **Estação de Campo de Ourique**

9.1.4. Reinforcement design (ULS+SLS); - $A_{s,req,2}$ -

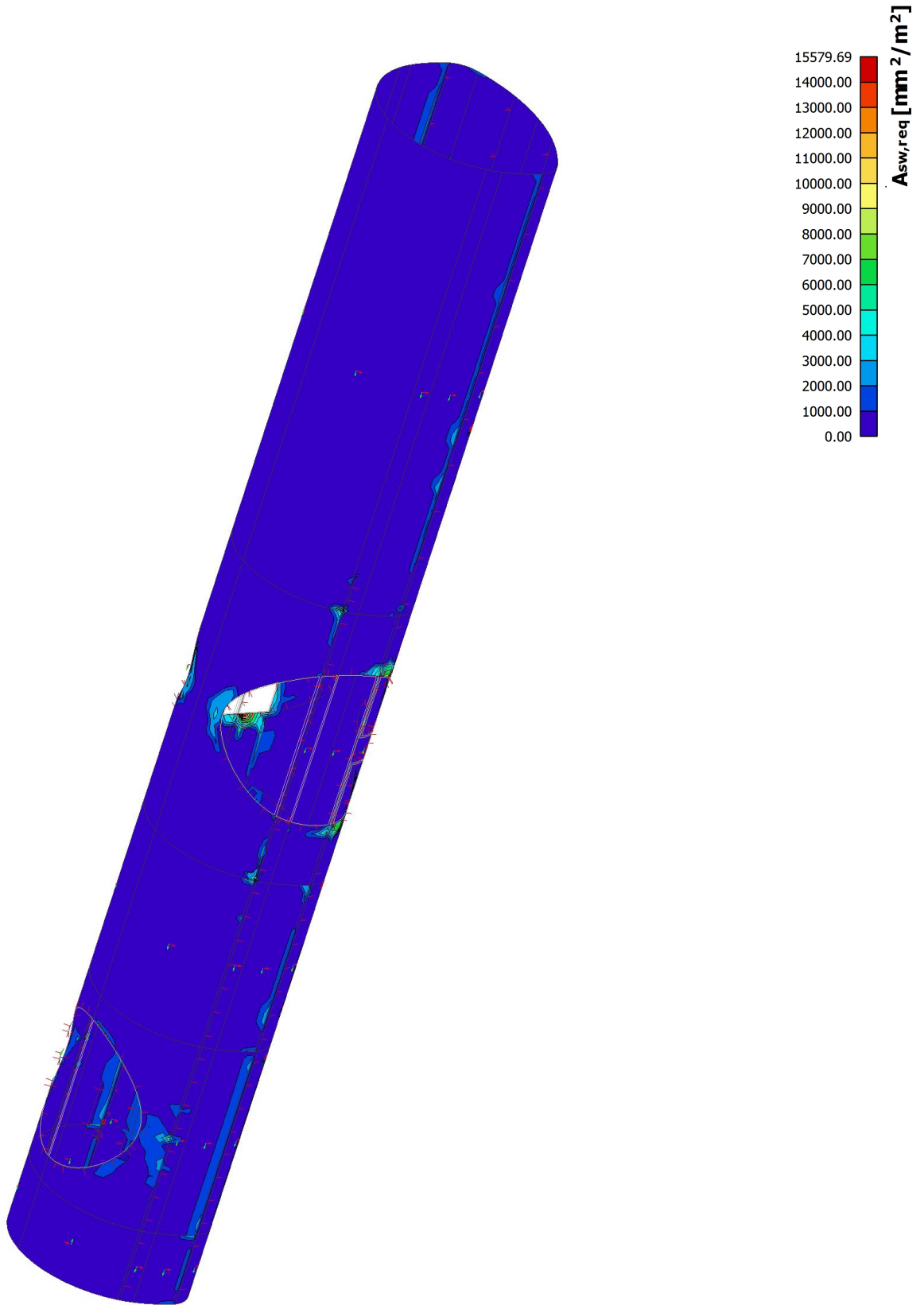
Values: $A_{s,req,2}$ -
 Nonlinear calculation
 Class: ULS-SLS
 Extreme: Global
 Selection: Named selection - T3
 Location: In nodes avg.. System: LCS
 mesh element



Project **Estação de Campo de Ourique**

9.1.5. Reinforcement design (ULS+SLS); - $A_{sw,req}$

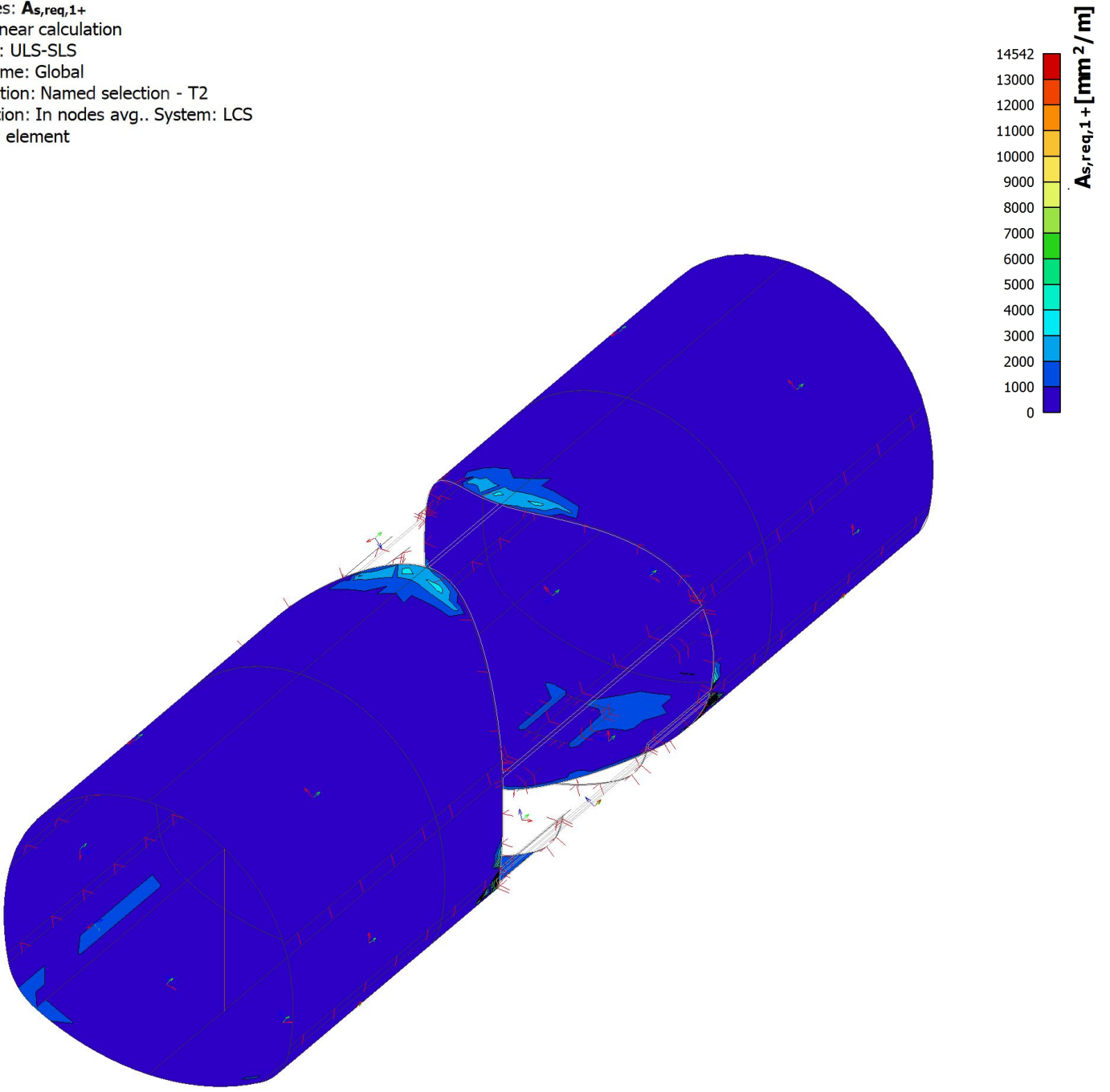
Values: $A_{sw,req}$
 Nonlinear calculation
 Class: ULS-SLS
 Extreme: Global
 Selection: Named selection - T3
 Location: In nodes avg.. System: LCS
 mesh element



9.2. Result picture generator

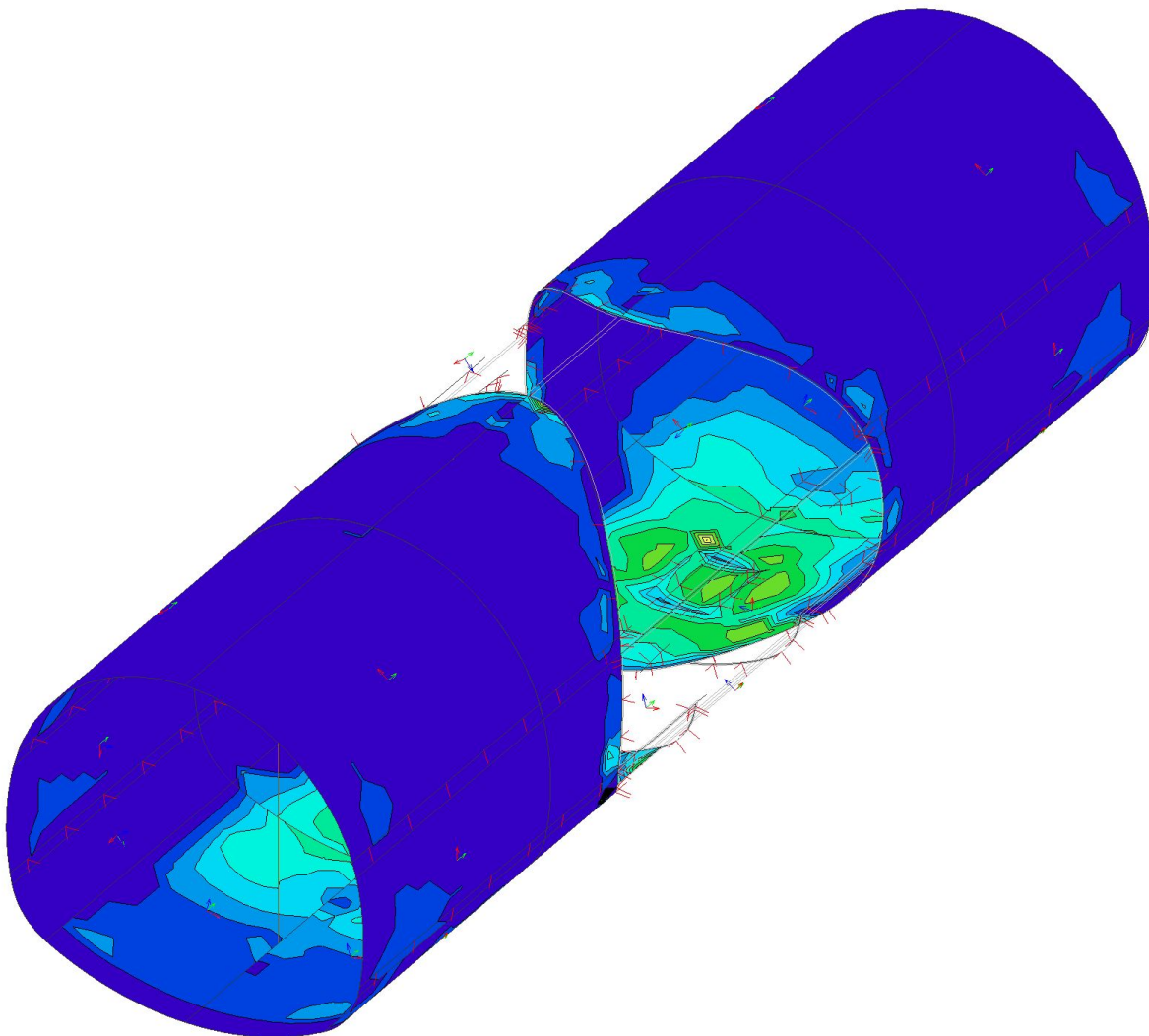
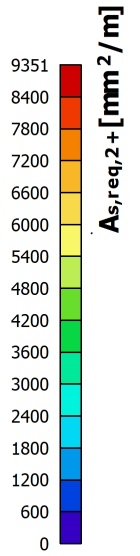
9.2.1. Reinforcement design (ULS+SLS); $A_{s,req,1+}$ - $A_{s,req,1+}$

Values: $A_{s,req,1+}$
 Nonlinear calculation
 Class: ULS-SLS
 Extreme: Global
 Selection: Named selection - T2
 Location: In nodes avg.. System: LCS
 mesh element



9.2.2. Reinforcement design (ULS+SLS); $A_{s,req,1+}$ - $A_{s,req,2+}$

Values: $A_{s,req,2+}$
 Nonlinear calculation
 Class: ULS-SLS
 Extreme: Global
 Selection: Named selection - T2
 Location: In nodes avg.. System: LCS
 mesh element



Project **Estação de Campo de Ourique**

9.2.3. Reinforcement design (ULS+SLS); $A_{s,req,1+}$ - $A_{s,req,1-}$

Values: $A_{s,req,1-}$
 Nonlinear calculation
 Class: ULS-SLS
 Extreme: Global
 Selection: Named selection - T2
 Location: In nodes avg.. System: LCS
 mesh element

