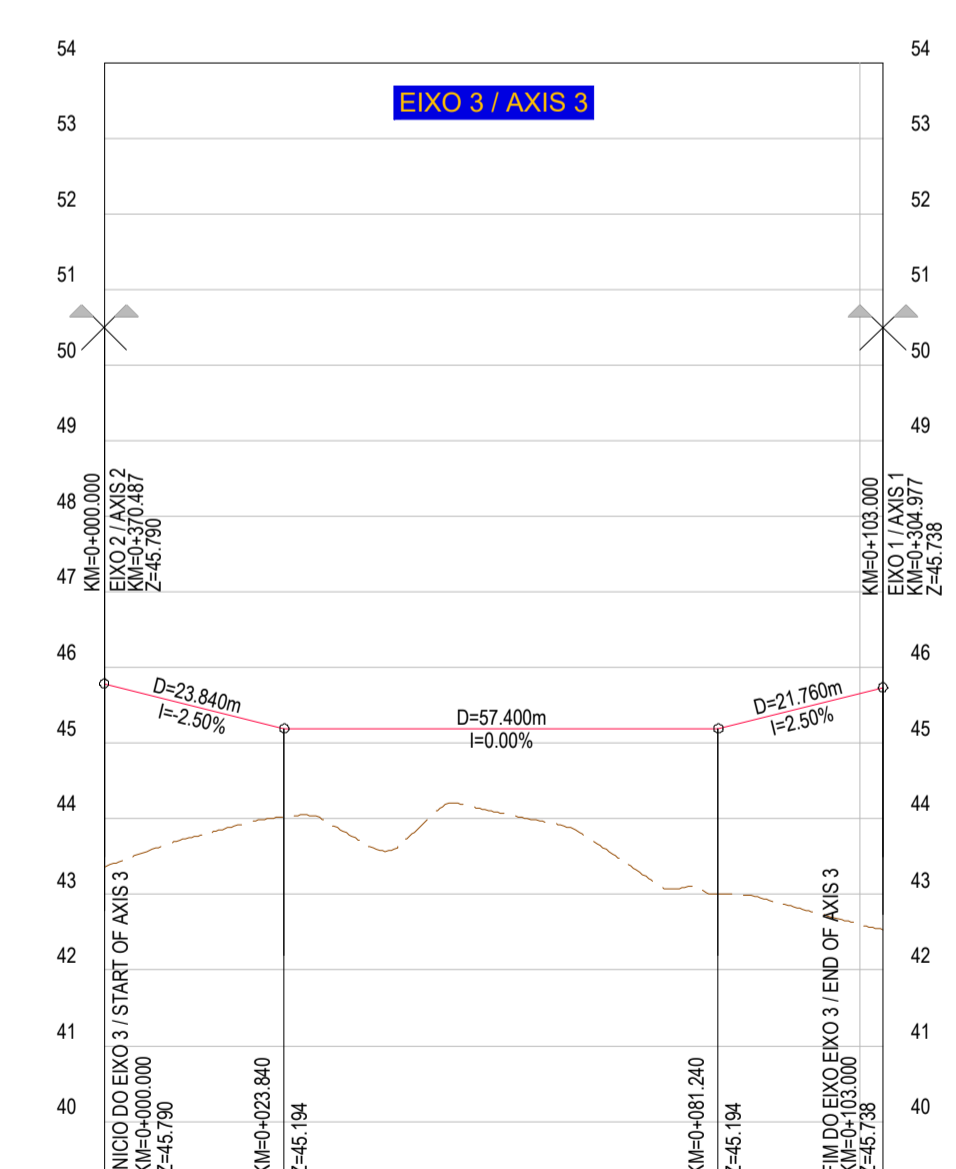
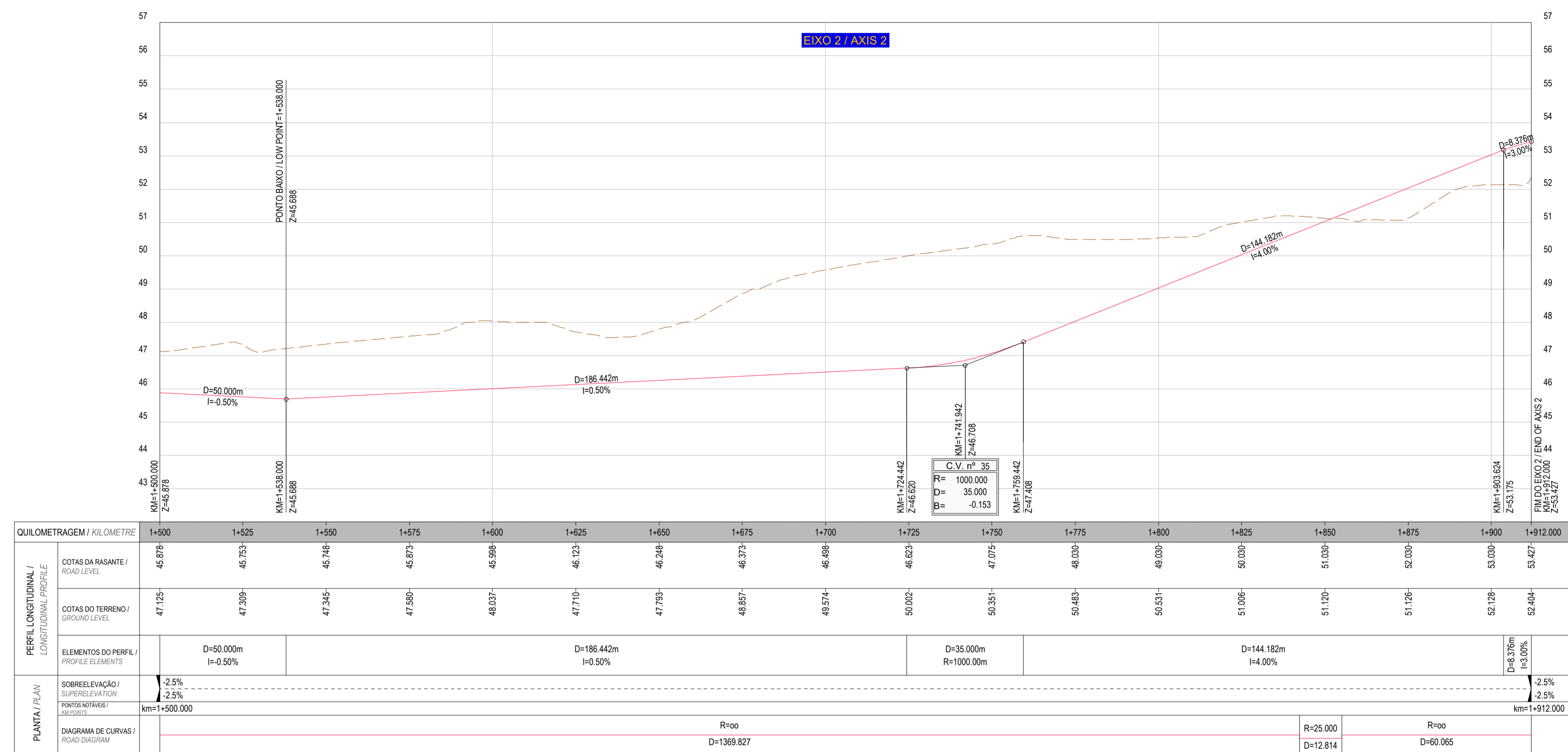


LEGENDA / LEGEND

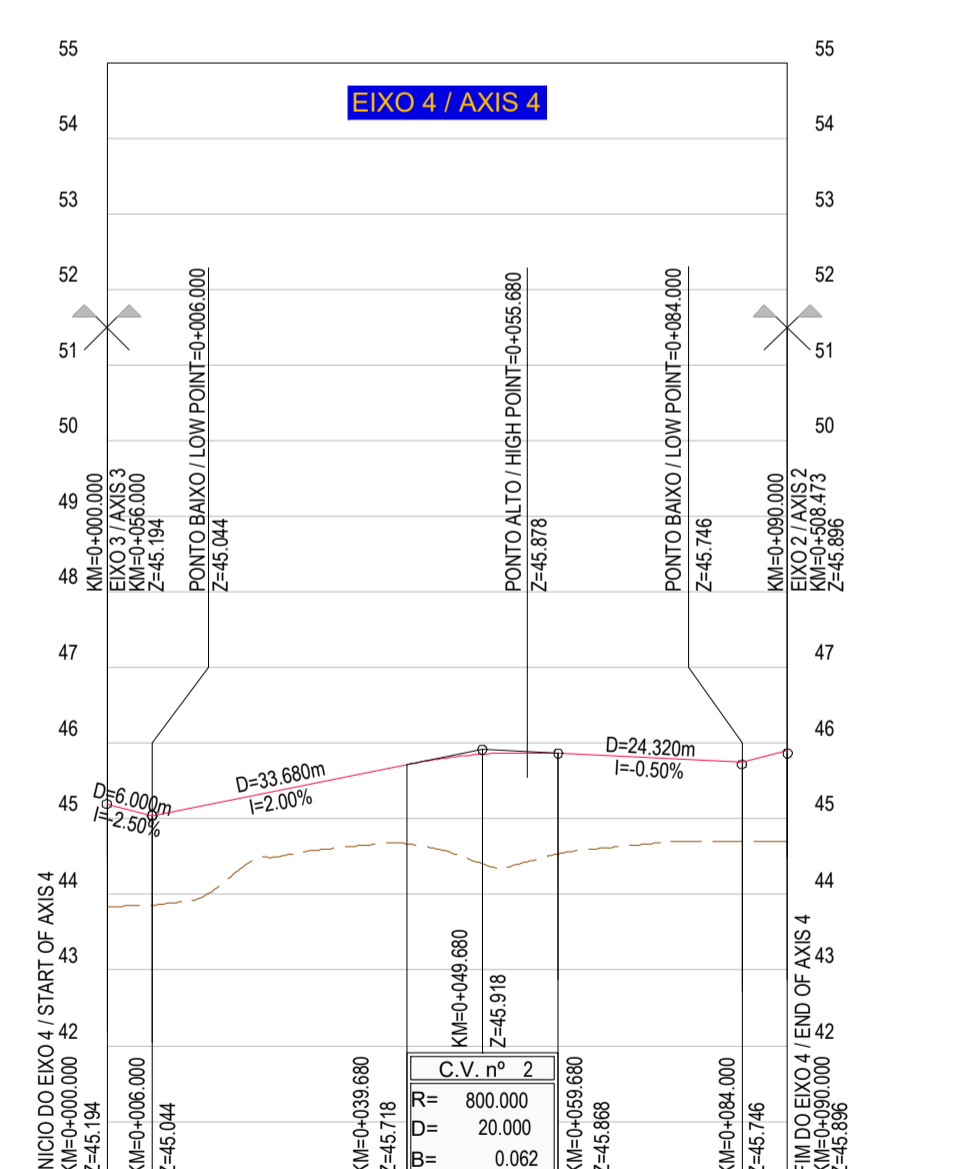
- TERRENO NATURAL / NATURAL GROUND LEVEL
- RASANTE / ROAD LEVEL

NOTAS / NOTES

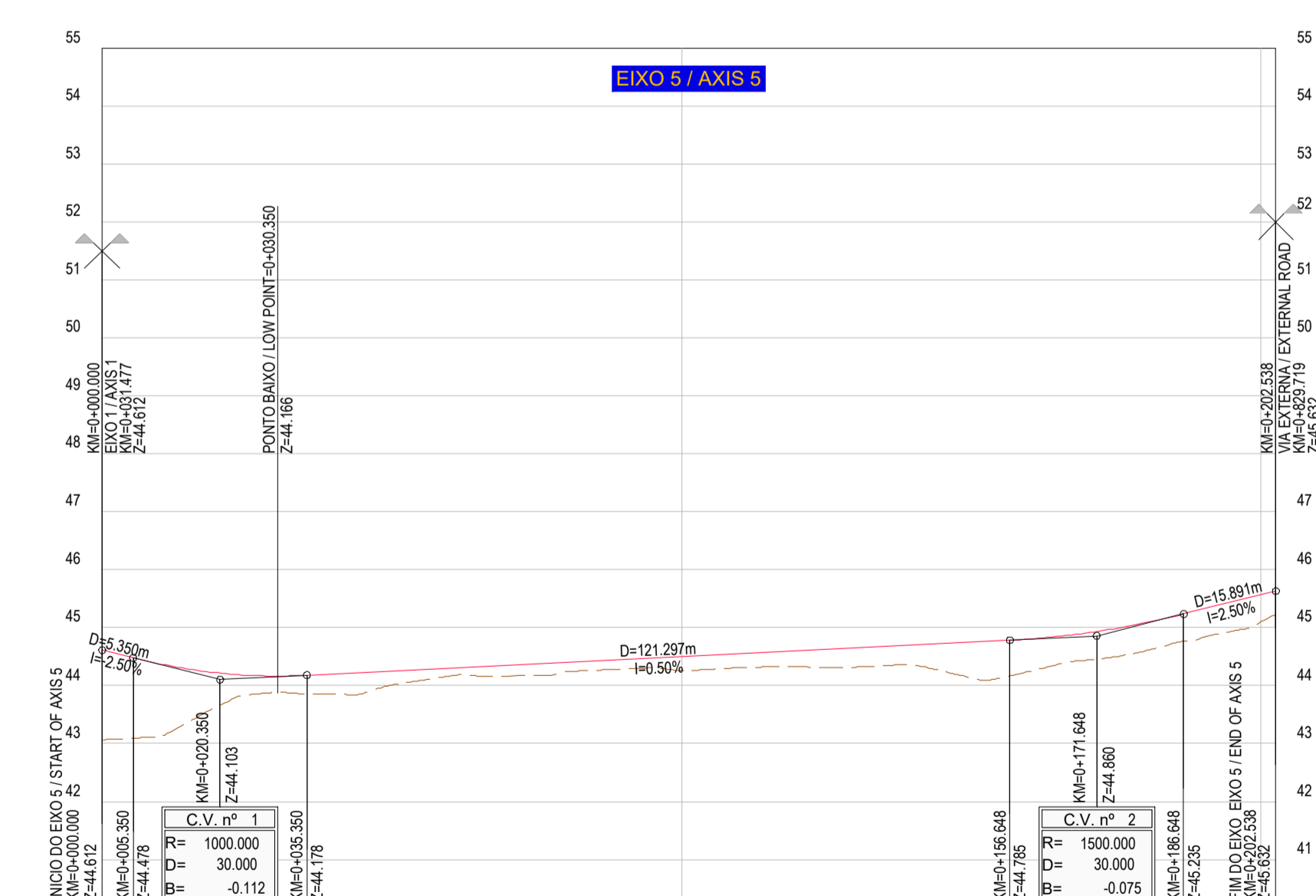
- COTAS EM METROS. / ALL LEVELS AND DIMENSIONS IN METERS.
- CONSULTAR AS DEMAIS PEÇAS DO PROJECTO. / DRAWING TO BE READ IN CONJUNCTION WITH OTHER ELEMENTS OF THE PROJECT.
- CASO SE VERIFIQUE QUALQUER INCOMPATIBILIDADE NO PRESENTE PROJECTO, A MESMA DEVERÁ SER DE IMEDIATO COMUNICADA POR ESCRITO PARA O PROJECTISTA. / IN CASE OF ANY INCOMPATIBILITY IN THE PRESENT PROJECT, IT MUST BE IMMEDIATELY COMMUNICATED IN WRITING TO THE PROJECT ARCHITECT.
- TODAS AS DIMENSÕES, COTAS E COORDENADAS DE IMPLANTACÃO TOPOGRÁFICA, DEVERÃO SER VERIFICADAS NO LOCAL ANTES DO INÍCIO DOS TRABALHOS. / ALL DIMENSIONS, LEVELS AND COORDINATES TO BE CHECKED ON SITE.
- SISTEMA DE REFERÊNCIA GEOGRÁFICO - DATUM PT-TM66TRSS8. / GEOGRAPHIC REFERENCE SYSTEM - DATUM PT-TM66TRSS8.



KILOMETRAGEM / KILOMETRE		0+000	0+025	0+050	0+075	0+100+103.000
PERFIL LONGITUDINAL / LONGITUDINAL PROFILE	COTAS DA RASANTE / ROAD LEVEL	45.795	45.194	45.194	45.194	45.663
	COTAS DO TERRENO / GROUND LEVEL	43.365	44.042	44.129	43.079	42.904
ELEMENTOS DO PERFIL / PROFILE ELEMENTS		D=23.840m I=2.50%		D=57.400m I=0.00%		D=21.760m I=2.50%
	SOBRELEVACÃO / SUPERELEVATION	-2.5%				-2.5%
PLANTA / PLAN	PONTOS NOMINAIS / NAMED POINTS	km=0+000.000				
DIAGRAMA DE CURVAS / ROAD DIAGRAM		R=∞				
		D=103.000				



KILOMETRAGEM / KILOMETRE		0+000	0+025	0+050	0+075	0+090.000
PERFIL LONGITUDINAL / LONGITUDINAL PROFILE	COTAS DA RASANTE / ROAD LEVEL	45.194	45.424	45.657	45.791	45.886
	COTAS DO TERRENO / GROUND LEVEL	43.996	44.486	44.386	44.676	44.726
ELEMENTOS DO PERFIL / PROFILE ELEMENTS		D=8.000m I=2.50%	D=33.680m I=2.00%	D=20.000m R=800.00m	D=24.320m I=0.50%	D=15.000m R=1000.00m
	SOBRELEVACÃO / SUPERELEVATION	-2.5%				-2.5%
PLANTA / PLAN	PONTOS NOMINAIS / NAMED POINTS	km=0+000.000				
DIAGRAMA DE CURVAS / ROAD DIAGRAM		R=∞				
		D=80.000				



KILOMETRAGEM / KILOMETRE		0+000	0+025	0+050	0+075	0+100	0+125	0+150	0+175	0+200+202.538	
PERFIL LONGITUDINAL / LONGITUDINAL PROFILE	COTAS DA RASANTE / ROAD LEVEL	44.612	44.180	44.252	44.377	44.502	44.627	44.752	44.883	45.622	
	COTAS DO TERRENO / GROUND LEVEL	43.063	43.840	44.014	44.174	44.254	44.312	44.134	44.501	45.001	
ELEMENTOS DO PERFIL / PROFILE ELEMENTS		D=25.300m I=2.50%	D=30.000m R=1000.00m			D=121.297m I=0.50%		D=30.000m R=1500.00m		D=15.891m I=2.50%	
	SOBRELEVACÃO / SUPERELEVATION	-2.5%								-2.5%	
PLANTA / PLAN	PONTOS NOMINAIS / NAMED POINTS	km=0+000.000									
DIAGRAMA DE CURVAS / ROAD DIAGRAM		R=∞		R=300.000		R=∞		R=70.000		R=∞	
		D=25.901		D=20.095		D=103.841		D=22.548		D=18.105	
								D=12.049			

00	31.07.2023	EMISSÃO INICIAL / INITIAL ISSUE	MAA
Rev.	Date	Descrição das alterações / Description of changes	Aprov. / Approved



Ciente / Client
CALB

PROJETO / Project
**UNIDADE INDUSTRIAL DE BATERIAS DE LÍTIU
LITHIUM BATTERY GIGAFACORY PLANT**

Fase / Phase
**PROJETO DE EXECUÇÃO
DETAIL DESIGN**

Designação / Designation
**VIAS / ROADS
VIAS INTERNAS
PERFIL LONGITUDINAL 3/11
INTERNAL ROADS
LONGITUDINAL PROFILE 3/11**

Escalas / Scales:	H=1:1000 - V=1:100	Projetado / Designed:	MXM
Data / Date:	31.07.2023	Desenhado / Drawn:	CAN
Processo / Process:	T2022-0519	Verificado / Checked:	MAA
Ficheiro / File:	T2022-0519-EX-ROA-GN-2103-DWG-00.dwg	Aprovado / Approved:	FBM

Desenho / Drawing: **EX-ROA-GN-2103 00** Revisão / Revision:

This drawing is property of QUADRANTE, Engenharia e Consultoria, S.A. It cannot be copied, partially or totally, or conveyed to third parties without written allowance from QUADRANTE, S.A. This drawing is only good for construction if properly signed.