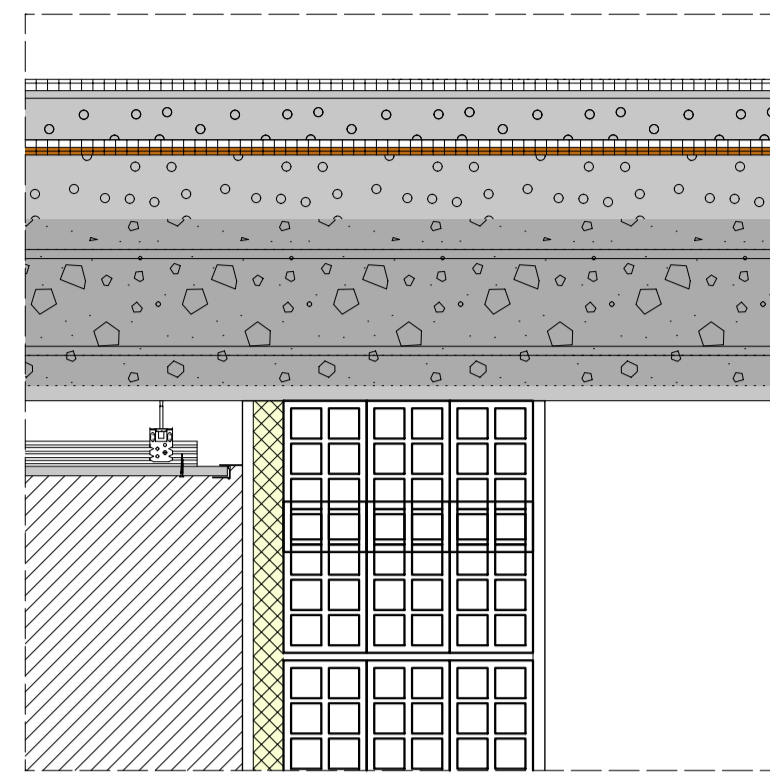
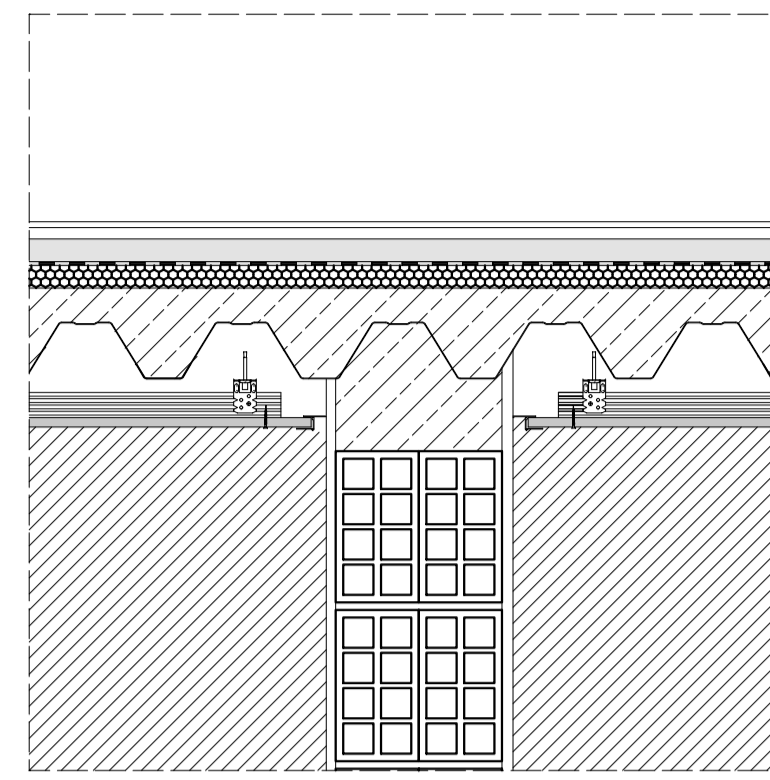


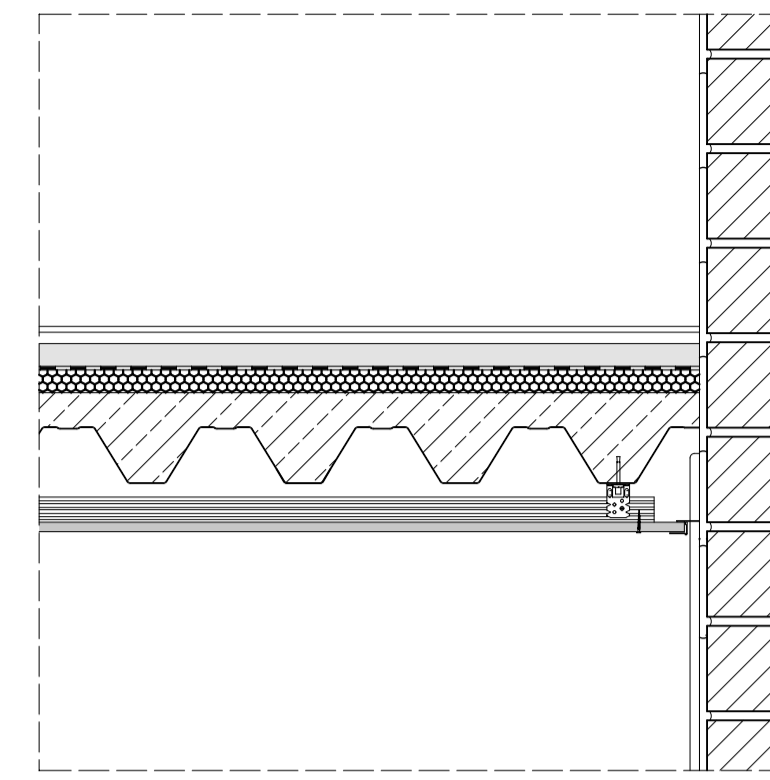
P1



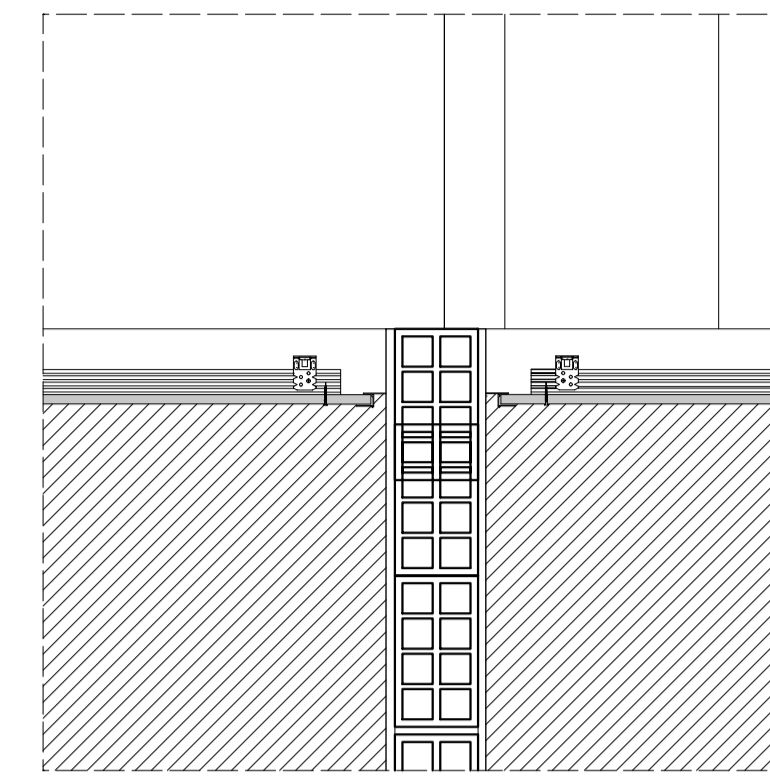
P2



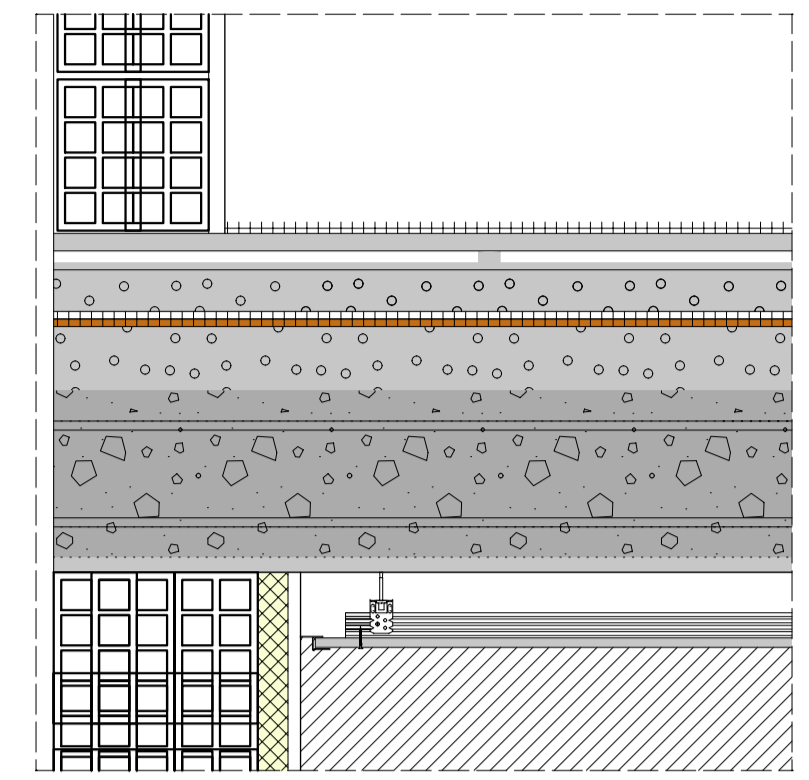
P3



P4

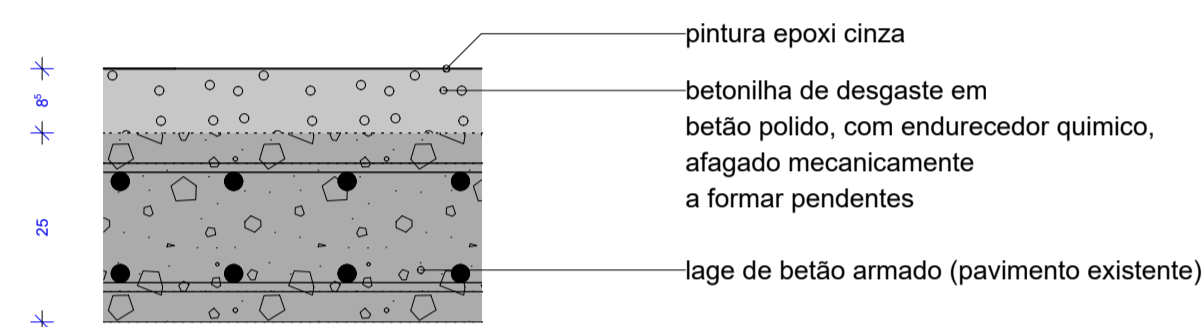


P5

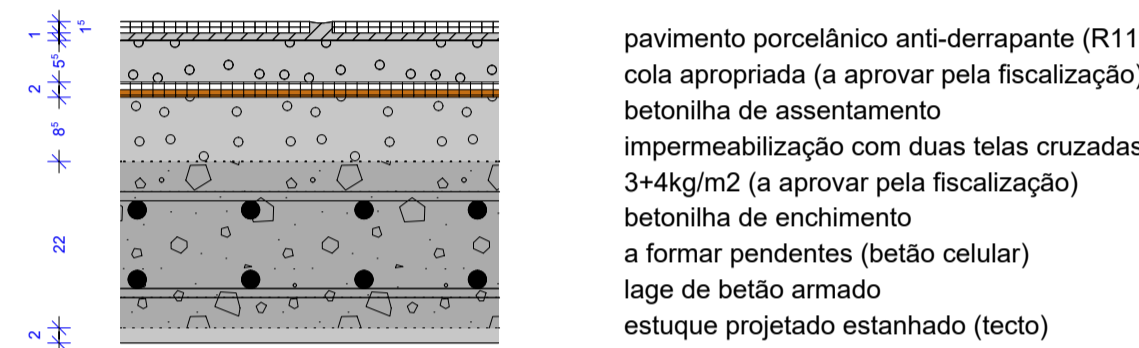


P6

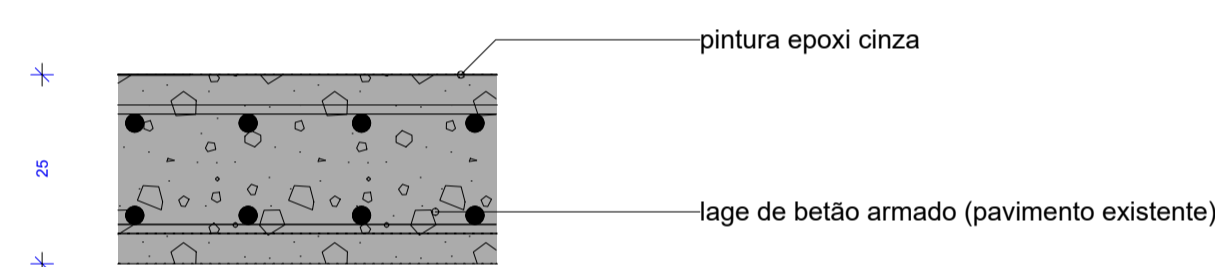
CAIXA DE PAVIMENTO CP01



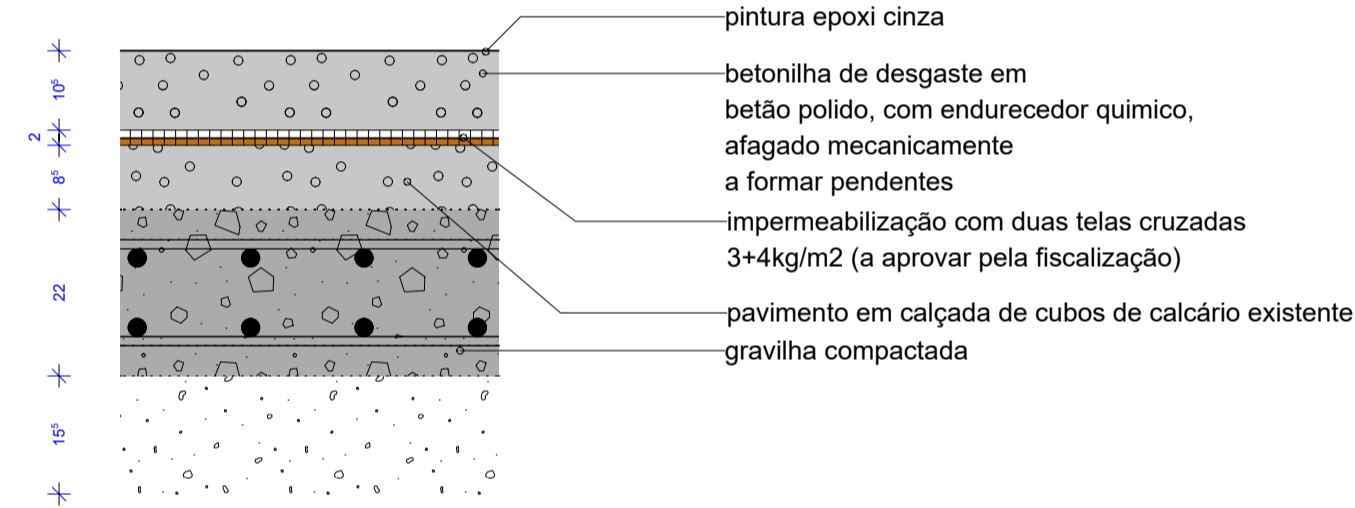
CAIXA DE PAVIMENTO CP05



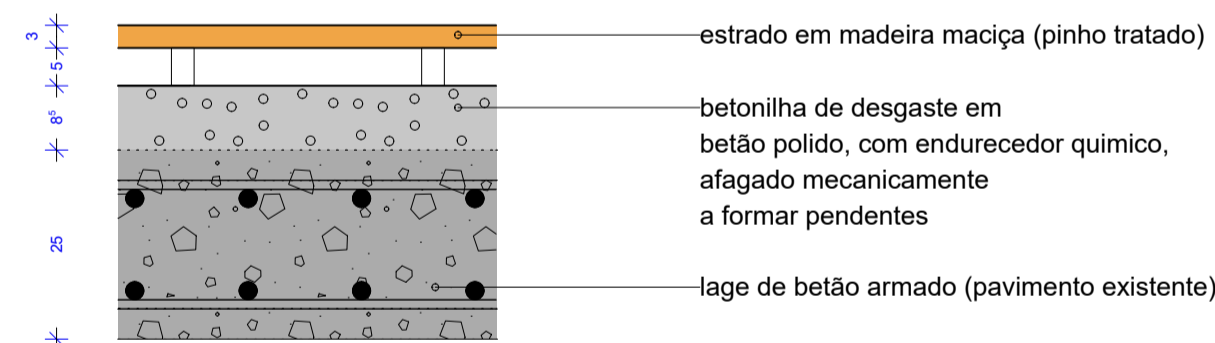
CAIXA DE PAVIMENTO CP02



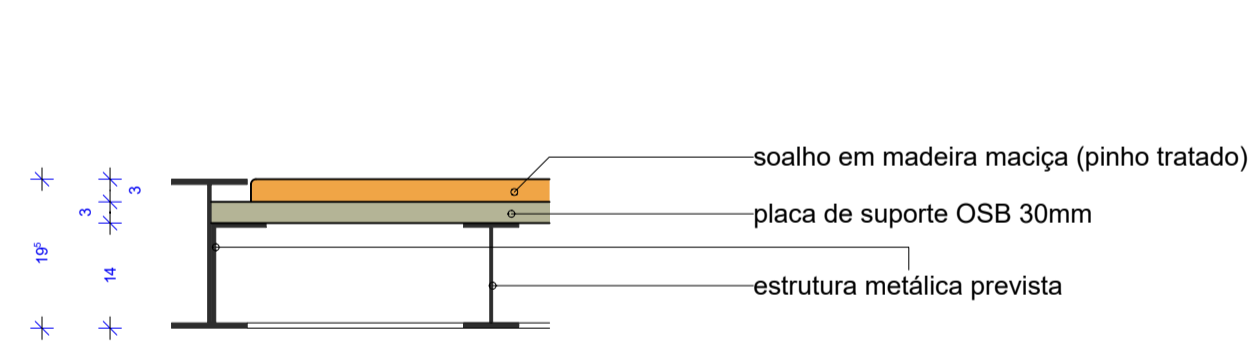
CAIXA DE PAVIMENTO CP06



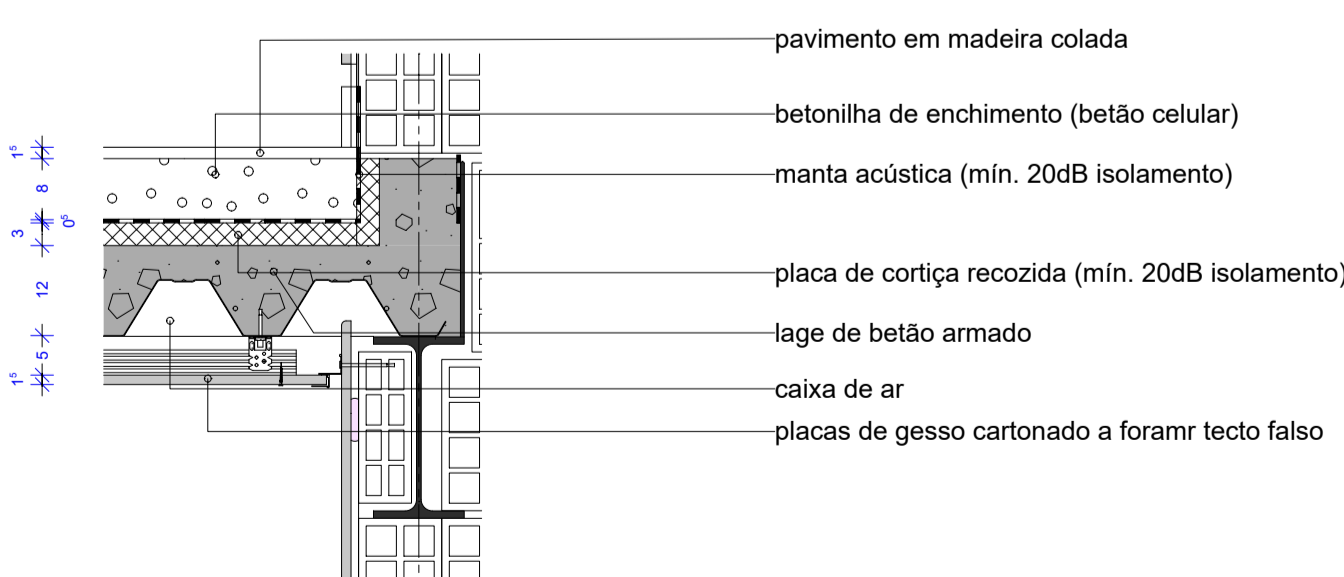
CAIXA DE PAVIMENTO CP03



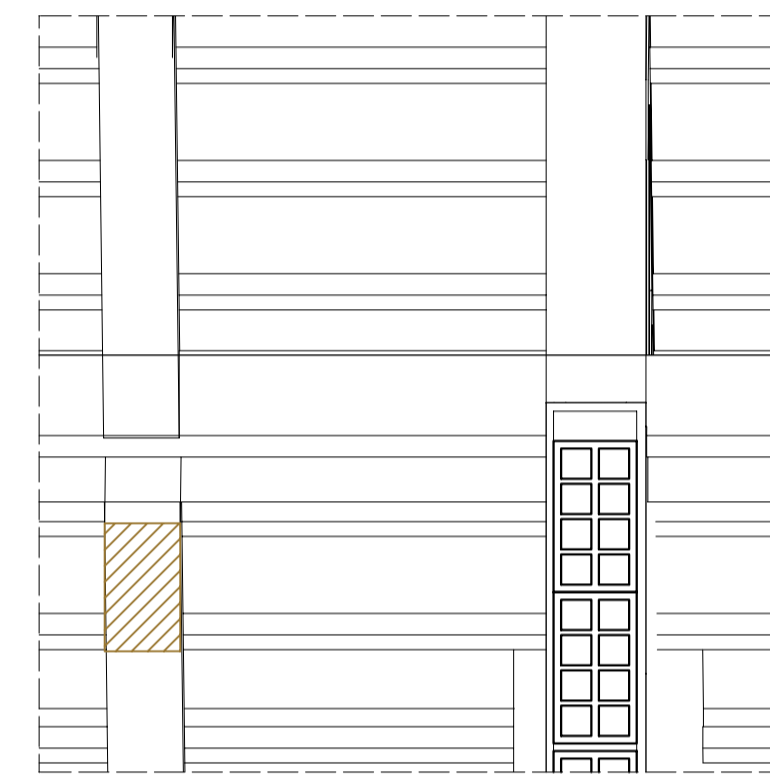
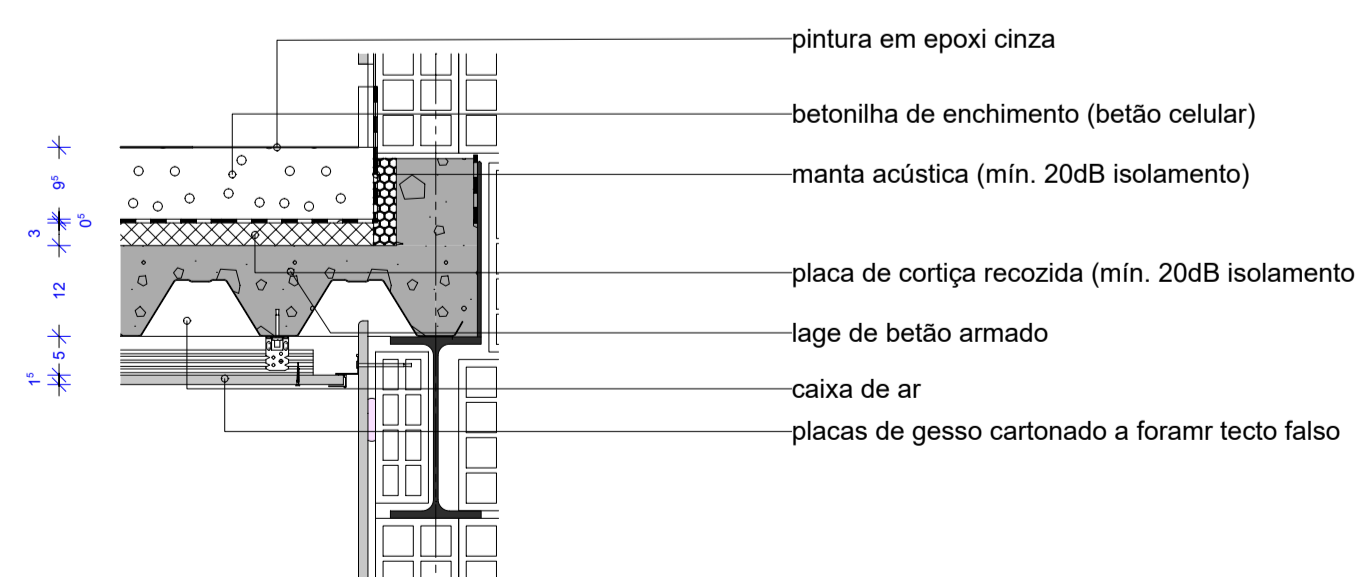
CAIXA DE PAVIMENTO CP07



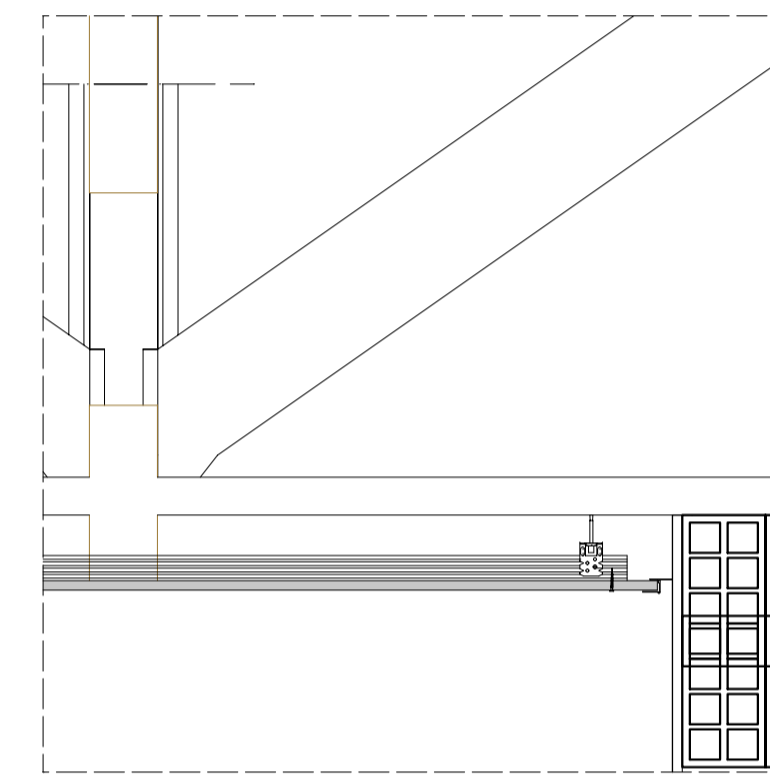
CAIXA DE PAVIMENTO CP04



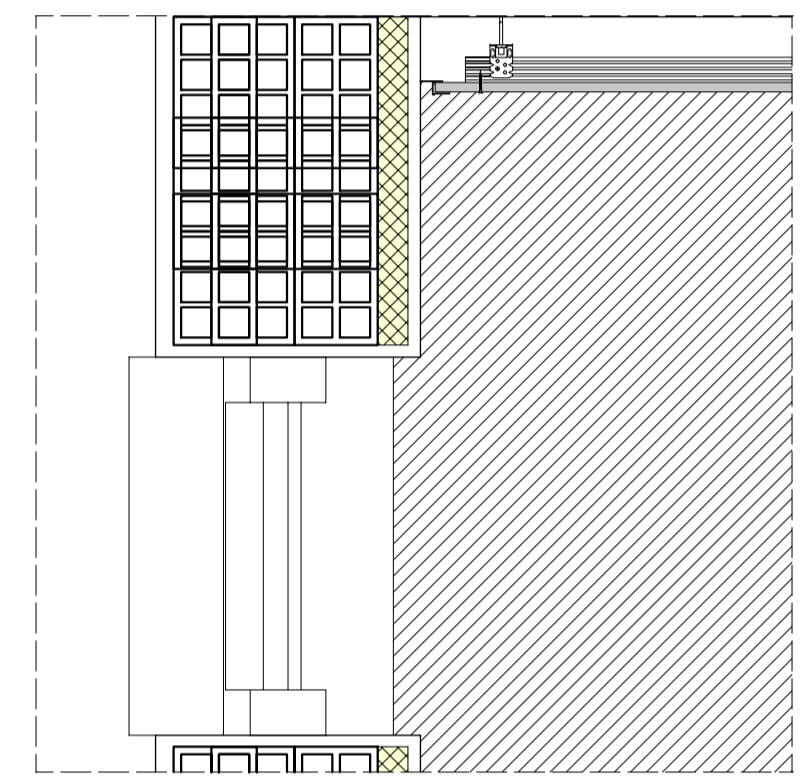
CAIXA DE PAVIMENTO CP04a



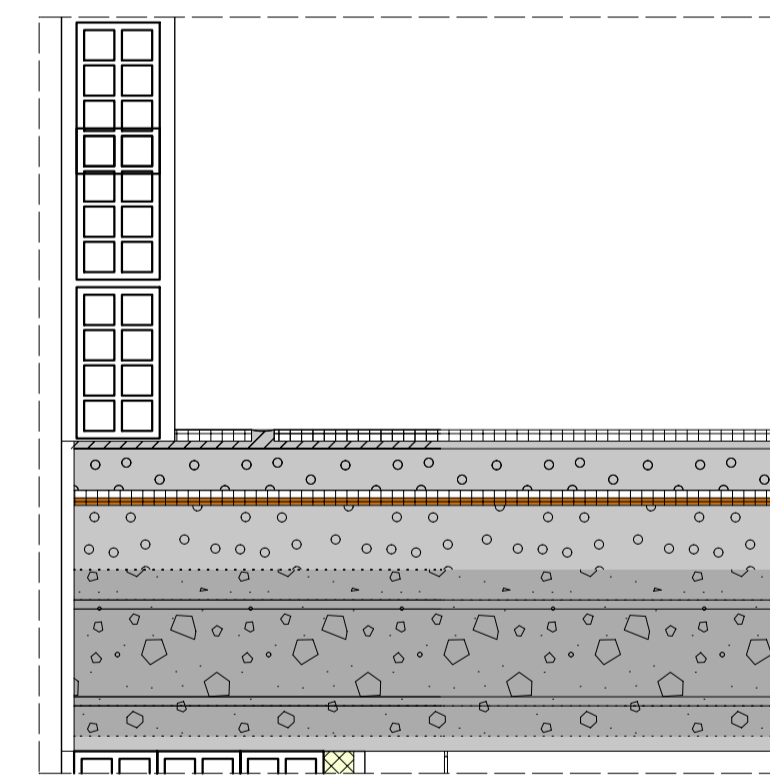
P7



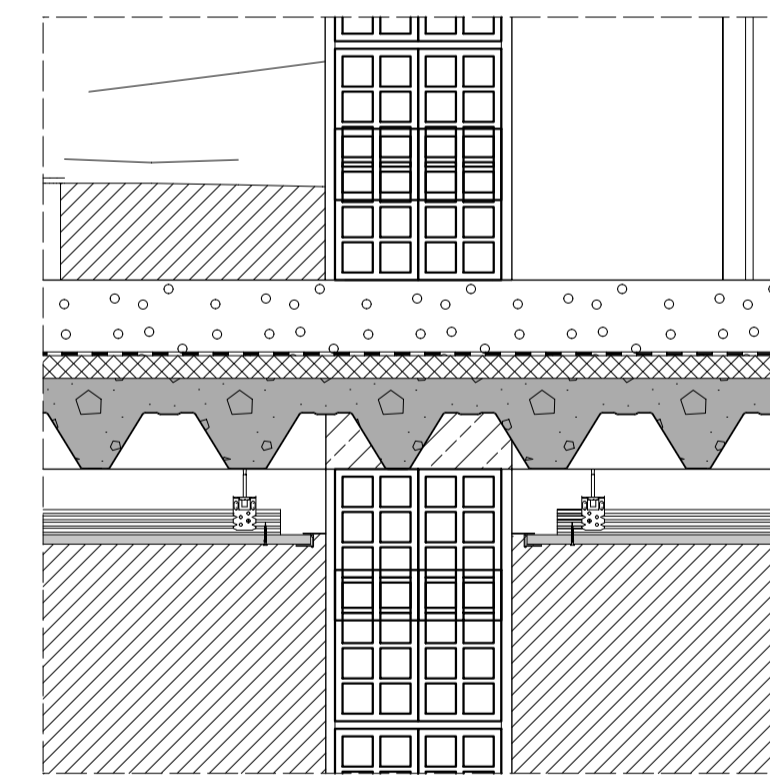
P8



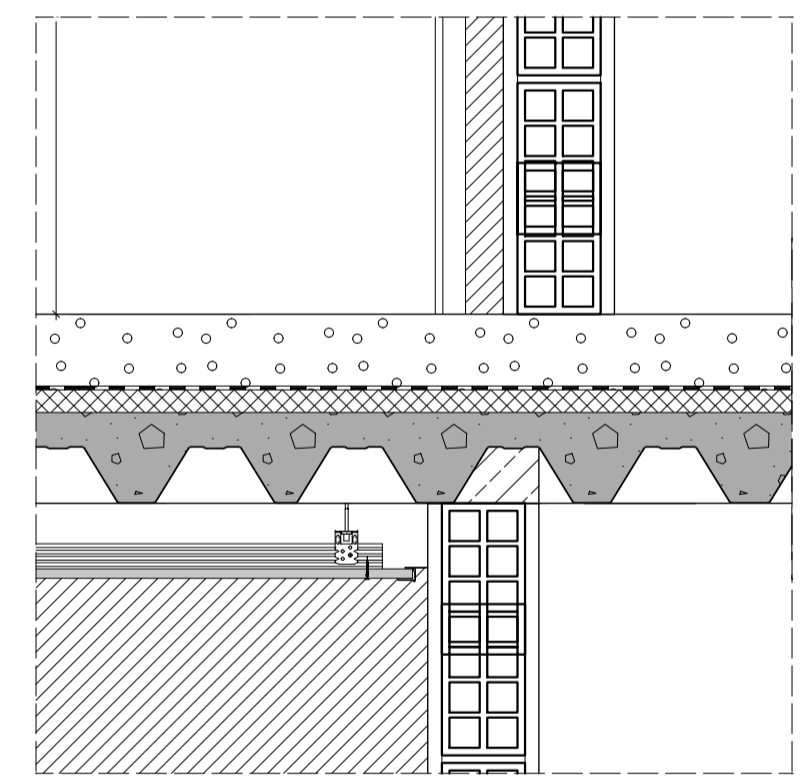
P9



P10



P11



P12

Projecto AMPLIAÇÃO E REQUALIFICAÇÃO DE ESTALEIRO NAVAL, INCLUINDO PARQUEAMENTO A NADO E MODERNIZAÇÃO DAS INSTALAÇÕES DA QUINTA DO PROGRESSO, FARO

Arquitecto ARQ.TO TIERRI F. FARIAS
Coordenador Membro da Ordem dos Arquitectos Portugueses nº4596

Cliente/requerente NAVE PEGOS Comércio e Manutenção de Embarcações, Lda.
Cont. Fiscal nº 503621951
Quinta do Progresso, Sítio da Panasqueira, 8005-164 FARO

Fase do projecto PROJECTO DE EXECUÇÃO

Conteúdo DETALHES CONSTRUTIVOS_Paredes e Caixas de Pavimento

Project no.	00170	Revisão	#00
Escala	1/10	Layout no./file no.	2017/430.434.438.439.441
Formato	A1 landscape	Ref. interna	Proj-2024-Exec
Data	11.07.2024	Peça Desenh. nº	032

tierrifarias arquitectos tm

Avenida 5 de Outubro, 55 - 2º Dio - 8000-075 FARO
T. rede fixa nacional +351 289 827 540 - mail: geral@tierrifarias.pt

