



"CE" DECLARATION OF CONFORMITY

HYDRAULIC Eurobaler

TYPE	485	SERIAL NUMBER	E08.101.07
NET WEIGHT Kg	21900	MANUFACTURING YEAR	2007

WITH CRANE MOD. M11000S PF 01-70

SERIAL NUMBER	011-07	MAX FLOW Kg (in every boom's position)	1540
MANUFACTURING YEAR	2007		

Is in conformity:

- With what provided by the Decree of the President of the Republic no. 547 dated 27th April 1955 and further decrees regarding the work safety.
- With the technical documentation (calculation report, drawings) whose original is filed at our Technical Office.
- With the rule 98/37 CEE regarding machines and its relevant amendments 98/79 CEE. UNI EN 292/1, UNI EN 292/2, UNI EN 294, UNI EN 349, UNI EN 418, UNI EN 457, pr EN 1050 e CEI EN 60204/1.
- With the technical/commercial documentation.
- With the rule 89/336 on »ELECTROMAGNETIC COMPATIBILITY «
- * Instructions booklet and spare parts in English language.
- * We declare the application of the CE plate.

Serie number:
E08.101.07

N. de motor
21794388

Yours faithfully
An Administrator
DESENZANI SILVIO

EUROMECC s.r.l.
25010 ISORELLA (Brescia) Italy - Via Visano, 78/80
Amm./Prod.: Tel. (+39) 030 9958230 r.a. - Fax (+39) 030 9952226
Comm.: Tel. (+39) 030 9958151 r.a. - Fax (+39) 030 9952223
Partita IVA: 00567710983



EUROMECC s.r.l.



EUROHYDROMECC

ISOMMECC



NEW Hydraulic Baler Pressa Idraulica



EUROBALER

Tipi di allestimento

Arrangement types

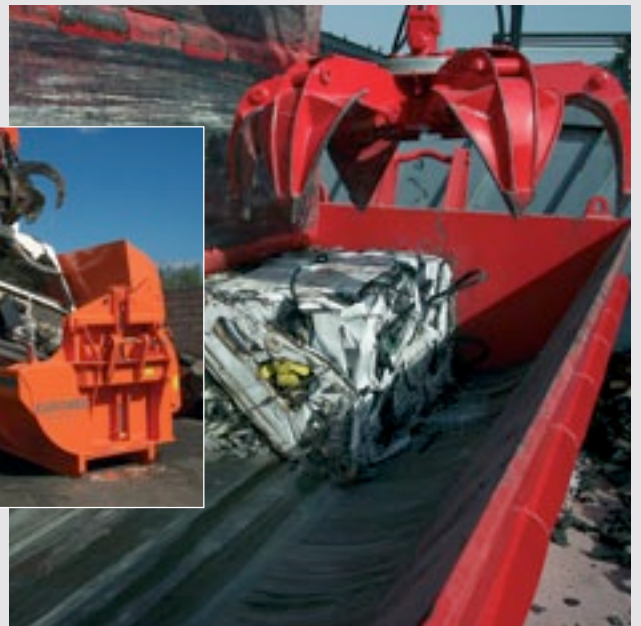


FACILE
da trasportare
RAPIDA da
installare

EASILY
transportable
QUICK
setup



Fasi di lavorazione Working stages



NUOVA, POTENTE, AFFIDABILE! NEW, POWER



■ **Posto comandi**
Controls place



■ **Gruppo motore con carter insonorizzato, raffreddamento ad aria**
Engine group with sound-proof casing, air cooled



■ **Gruppo motore con carter insonorizzato, raffreddamento ad acqua**
Engine group with sound-proof casing, liquid cooled

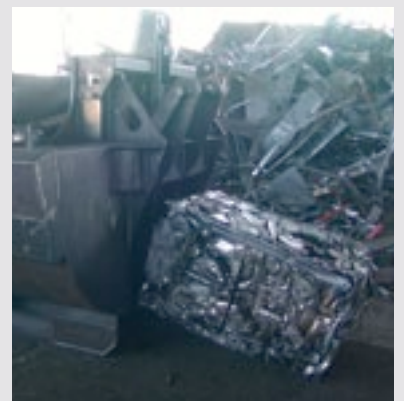
Pressa Eurobaler nei dettagli EFFICIENT, RELIABLE! Eurobaler in details



■ **Fine corsa magnetici ad elevata affidabilità**
Magnetic and highly reliable stops



■ **Particolari impianto idraulico**
Hydraulic system detail



■ **Porta espulsione**
Ejection door

■ **Radiocomando a bordo macchina**
Radiocontrol on board



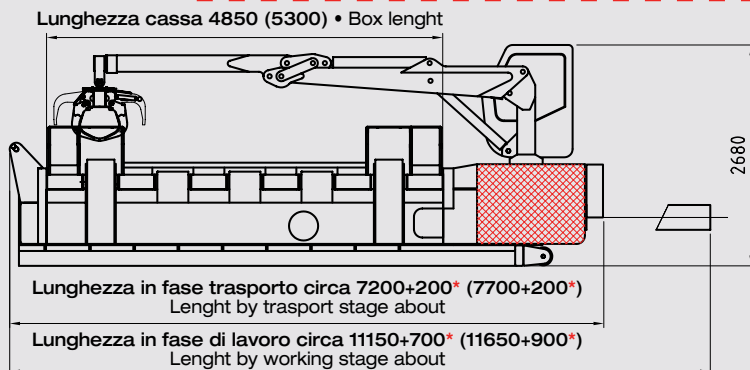
■ **Acciai da costruzione ad alto grado di snervamento per le strutture e antiabrasione per parti soggette ad usura**
High yield degree for structural steel and antiabrasion properties for steel subject to wear



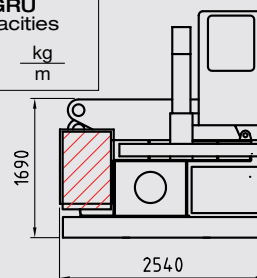
Dimensioni Eurobaler 485 - (530)

Dimensions

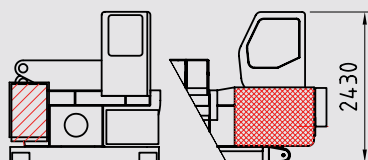
Vista con gru e cabina comandi • Crane and control cabin view



Portate GRU CRANE capacities		
1350	1750	kg
6,90	5,40	m



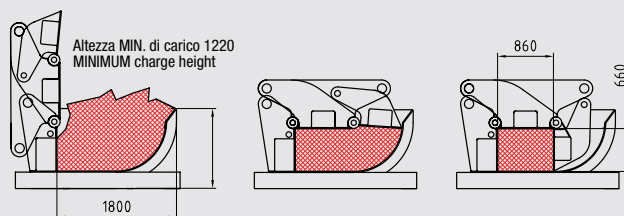
Vista con cabina comandi View with control cabin



Vista senza gru e senza cabina comandi View without crane and without control cabin

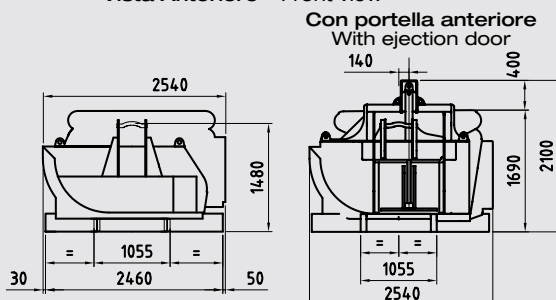
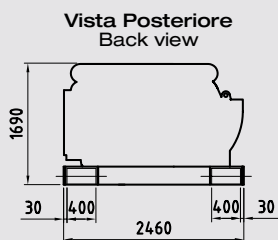


Vista lavorazione pacco Worked bale view

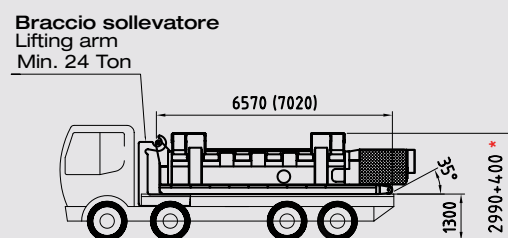


PRESSA SCARRABILE - Ingombri vari • HOOKLIFT BALER - Various dimensions

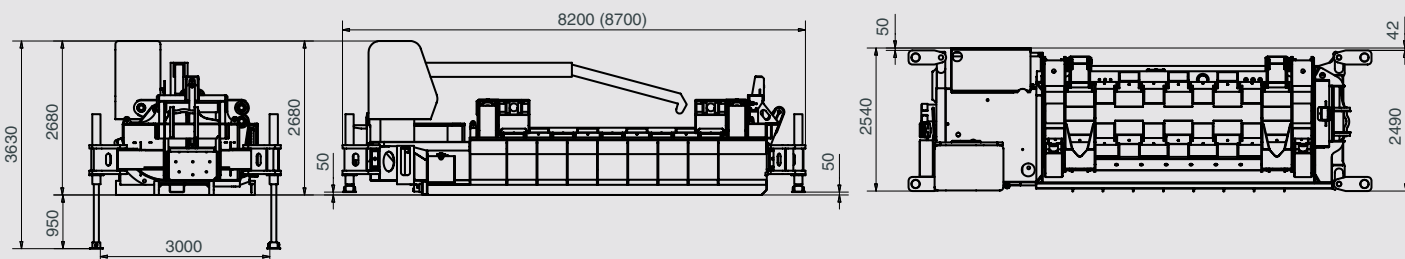
Vista Anteriore • Front view



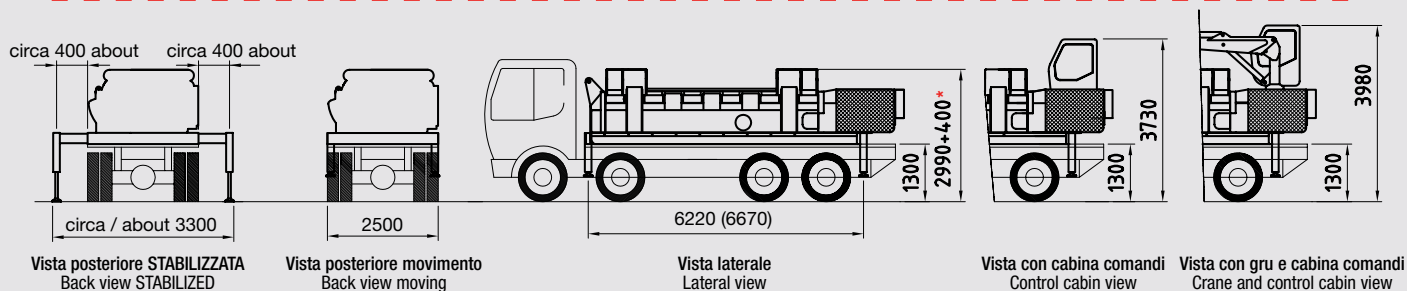
Vista laterale su camion • Lateral view on truck



PRESSA mod. EUROBALER D con 4 staffe retraibili • EUROBALER D with 4 hydraulic stabilizers



PRESSA AUTOMATICA - Ingombri vari • TRUCK MOUNTED BALER - Various dimensions



*Per pressa con porta di espulsione - For baler with ejection

- DATI E PESI NON SONO IMPEGNATIVI, LA DITTA SI RISERVA DI APPORTARE MODIFICHE SENZA PREAVVISO
- DATA AND WEIGHTS ARE NOT BINDING, THE COMPANY RESERVES ITSELF THE RIGHT TO MAKE IMPROVING AMENDMENTS WITHOUT NOTICE

Caratteristiche tecniche

Eurobaler 485 - (530) Technical details

■ MOTORE

Tipo DIESEL 4 tempi, iniezione diretta, turbo intercooler aria/aria
 Marca: **CUMMINS** (Epa Tier 3 - EU Stage IIIa)
 Numero dei cilindri 4
 Potenza max Kw 113 (HP 152) a g/1' 2200
 Cilindrata lt. 4,5
 Raffreddamento liquido
 Consumo a 1800 g/1' gr/KW-h 220
 Livello acustico LW: db(A) 93

■ IMPIANTO ELETTRICO

Tensione di alimentazione V 24
 Alternatore A 75 / V 28
 Motorino avviamento Kw 3,7 / V 24
 Batterie 2 x A 100 / V 12

■ IMPIANTO IDRAULICO

N° 1 Pompa a pistoni assiali a cilindrata variabile
 Portata max l/min 230
 Pressione esercizio bar 280
 N° 1 Pannello idraulico con tutti i sistemi di comando e di controllo idraulici ed elettro-idraulici
 N° 1 Filtro idraulico di elevata portata
 N° 1 Scambiatore aria/olio elettrico ad elevata capacità di scambio

■ COMANDI

Consolle di comando elettromeccanica estraibile, per azionamento manuale ed automatico.

■ DIMENSIONI

Lunghezza totale	+ 200*	mm	7200	(7700)
Lunghezza cassa		mm	4830	(5280)
Larghezza totale in fase trasporto		mm	2540	(2540)
Altezza max con GRU in fase trasporto		mm	3980	(3980)
Altezza max con GRU		mm	2680	(2680)
Peso pressa		Kg	19100	(20000)
Peso pressa con cabina		Kg	19400	(20400)
Peso pressa con gru e cabina		Kg	21800	(22800)
			+1400*	+2000*

■ MATERIALI DI COSTRUZIONE

Parti strutturali in acciaio ST-52/WELDOX 700
 Cassa in acciaio antiusura HARDOX 400/HARDOX 500

■ DESCRIZIONE GENERALE

Cilindro spintore Spinta max Ton. 150
 Cilindri coperchio Spinta max Ton. 360

■ DIMENSIONI PACCO E PRODUZIONE ORARIA

Larghezza	mm	860
Altezza	mm	660
Lunghezza variabile a secondo del tipo di materiale compattato		
Produzione media oraria	Ton/h	8÷9 (9÷10)
Produzione media oraria*	Ton/h	15÷17 (16÷18)
Densità pacco	T/m ³	1÷1,1 (1÷1,1)

■ CARBURANTI E LUBRIFICANTI

Serbatoio gasolio	lt.	140	(140,0)
Serbatoio olio idraulico	lt.	460	(490,0)
Olio idraulico nel circuito	lt.	710	(760,0)
Olio motore diesel	lt.	17,5	(17,5)

■ ACCESSORI E OPTIONALS

CICLO AUTOMATICO, SEQUENZA:

- Pressatura con cilindro spintore
- Espulsione pacco*
- Ritorno cilindro spintore
- Apertura coperchio
- Riduzione al min del n° giri motore

GRU DA CARICO:

- Sbraccio 6,90 m.
- Rotazione non continua a 305°
- Polipo da 300 lt.
- Rotatore idraulico

- Manipolatori con servocomandi per comando GRU

- Cabina operatore ad ampia visibilità
- Piedi appoggio a terra (stabilizzatori)
- Sistema d'ingrassaggio centralizzato manuale
- Sistema d'ingrassaggio centralizzato automatico elettrico
- Radiocomando (solo per versione senza GRU)
- *Portella espulsione pacchi

■ ATTENZIONE SI PUO' RICHIEDERE LA PRESSA ANCHE CON MOTORE ELETTRICO AL POSTO DEL MOTORE DIESEL.

■ ENGINE

Type 4-stroke DIESEL, airless injection, intercooled turbo air/air
 Brand: **CUMMINS**
 Number of cylinders 4
 Max. power Kw 113 (HP 152) rpm 2200
 Displacement lt. 4,5
 Cooling liquid cooling
 Fuel consumption to 1800 rpm gr/KW-h 220
 Acoustic level LW: db(A) 93

■ ELECTRICAL SYSTEM

Power supply V 24
 Alternator A 75 / V 28
 Starting motor Kw 3,7 / V 24
 Batteries 2 x A 100 / V 12

■ HYDRAULIC PLANT

N° 1 Axial pistons- variable delivery pump
 Max. flow l/min 230
 Max. working pressure bar 280
 N° 1 Hydraulic panel with all control systems and electro-hydraulic and hydraulic systems
 N° 1 High capacity hydraulic filter
 N° 1 electric air/oil heat exchanger with high exchanging capacity

■ CONTROLS

Removable electromechanical control console, for manual and automatic operation.

■ DIMENSIONS

Total length	+ 200*	mm	7200	(7700)
Box length		mm	4830	(5280)
Total width by transport stage		mm	2540	(2540)
Max. height with CRANE by transport stage		mm	3980	(3980)
Max. height with CRANE		mm	2680	(2680)
Weight baler		Kg	19100	(20000)
Weight baler with cabina		Kg	19400	(20400)
Weight baler with crane and cabina		Kg	21800	(22800)
			+1400*	+2000*

■ CONSTRUCTION MATERIALS

Steel structural parts ST-52/WELDOX 700
 Antwear steel box HARDOX 400/HARDOX 500

■ GENERAL DESCRIPTION

Pushing cylinder Max force 150 Ton
 Cover cylinders Max force 360 Ton

■ BALE SIZE AND OUTPUT PER HOUR

Width	mm	860
Height	mm	660
Lenght variable depending on the type of compacted material		
Average output per hour	Ton/h	8÷9 (9÷10)
Average output per hour*	Ton/h	15÷17 (16÷18)
Bale density	T/m ³	1÷1,1 (1÷1,1)

■ FUELS AND LUBRICANTS

Fuel tank	lt.	140	(140,0)
Hydraulic oil tank	lt.	460	(490,0)
Hydraulic oil circuit	lt.	710	(760,0)
Engine oil	lt.	17,5	(17,5)

■ ACCESSORY FITTINGS AND OPTIONALS

SEQUENCE FOR AUTOMATIC CYCLE:

- Pressing by pushing cylinder
- Bale ejection*
- Return of the pushing cylinder
- Cover opening
- Reduction at the minimum of the engine revs number

WIDE VIEW OPERATOR'S CABIN:

- Loading crane with 6,90 m. reach
- Non continuous rotation 305°
- 300 lt grab
- Hydraulic rotator

- Joysticks with servocontrols for CRANE control

- Wide view operator cabin.
- Feet to lay on the ground (stabilizers).
- Centralised manual operated greasing system
- Centralised electric automatic greasing system
- Remote control (only for the WITHOUT CRANE version)
- *Bale ejection door

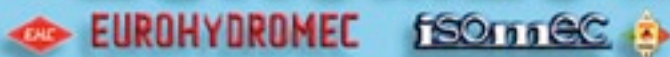
■ CAUTION BALER WITH ELECTRIC MOTOR INSTEAD OF DIESEL ENGINE CAN BE REQUIRED.

• DATI E PESI NON SONO IMPEGNATIVI, LA DITTA SI RISERVA DI APPORTARE MODIFICHE SENZA PRAEAVISO

• DATA AND WEIGHTS ARE NOT BINDING, THE COMPANY RESERVES ITSELF THE RIGHT TO MAKE IMPROVING AMENDMENTS WITHOUT NOTICE



EUROMECC s.r.l.



Via Visano, 78/80 - 25010 ISORELLA (Brescia) Italy

Commerciale - Sales Dept: Tel. +39 030 9958151 r.a. - Fax +39 030 9952223

Amministrazione e Produzione - After sales service Dept:

Tel. +39 030 9958230 r.a. - Fax +39 030 9952226

E-mail: info@euromecsr.com - sales@euromecsr.com

Internet: www.euromecsr.com

