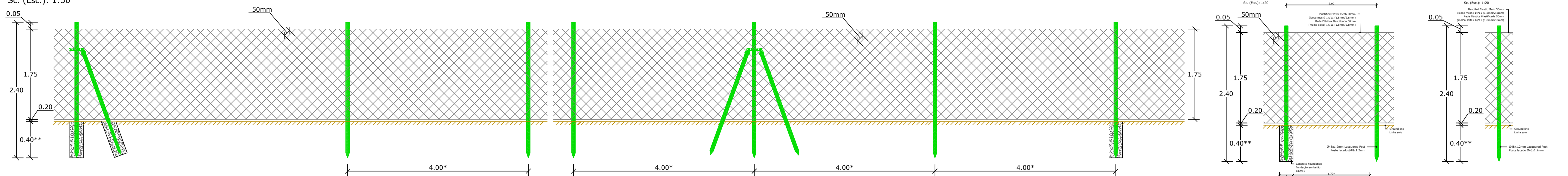
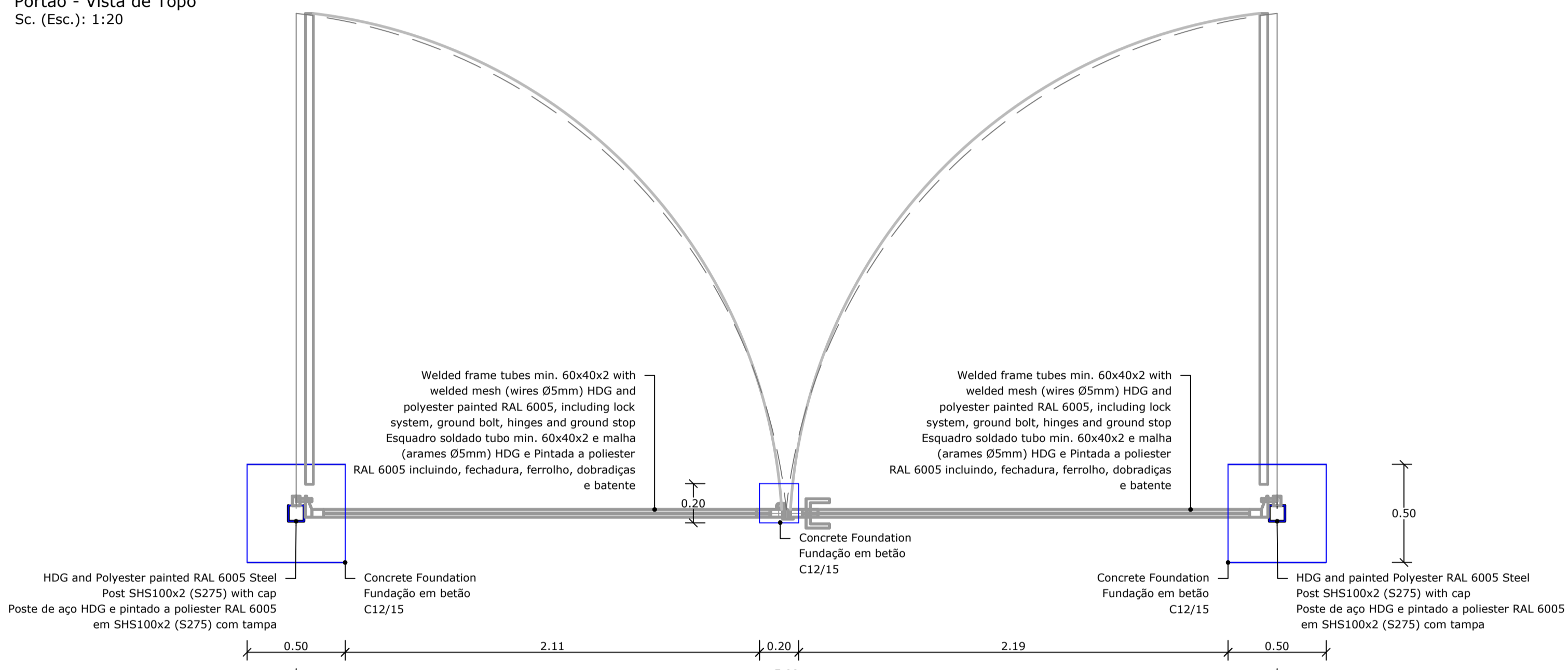


Fence Elevation
Alçado da Vedação
Sc. (Esc.): 1:50



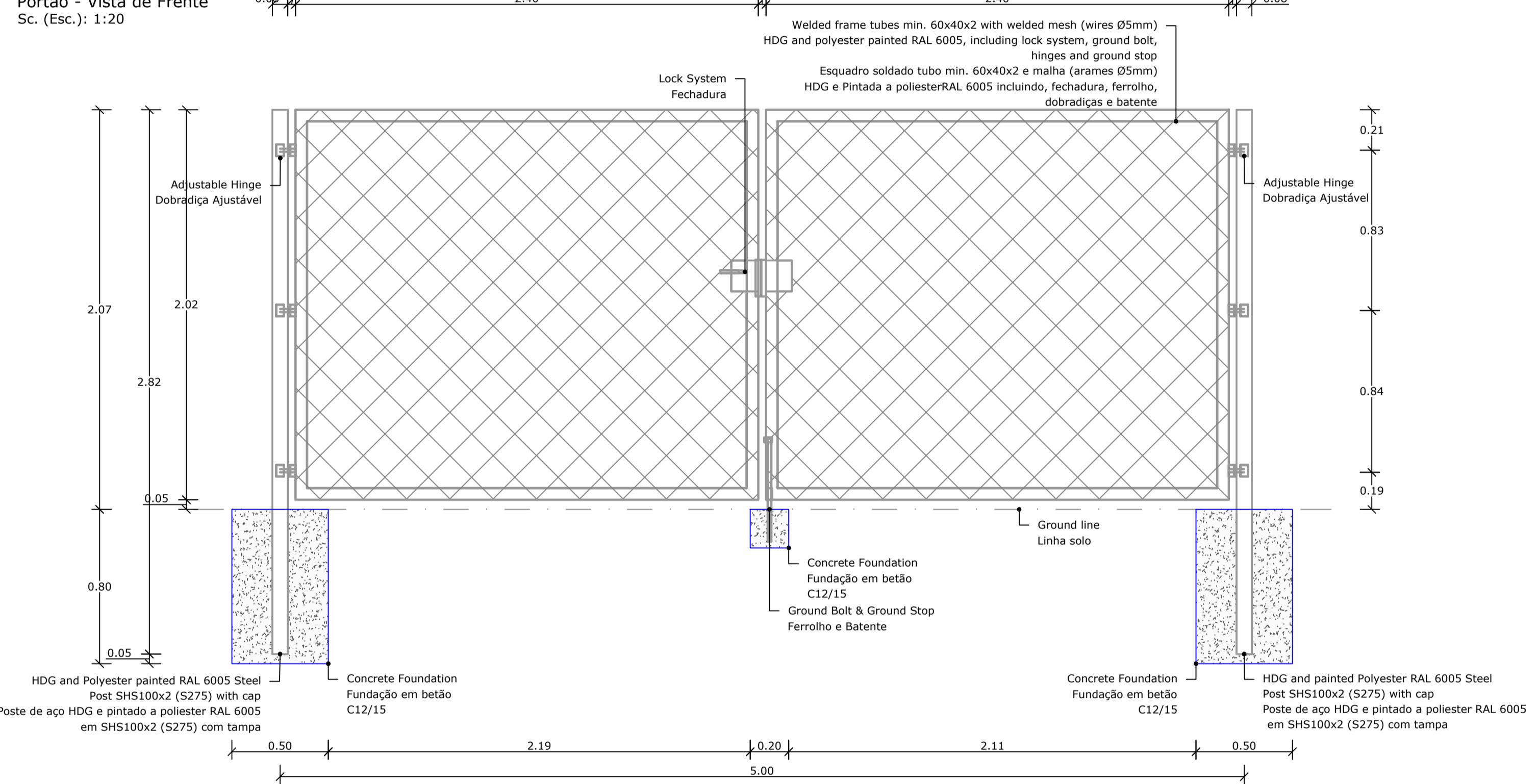
* Dimensions to be adjusted to site specific conditions / Dimensões a ser ajustadas as condições específicas do terreno
 ** The geotechnical report states hard rock near the surface, so, the final depth can be lower / O relatório geotécnico indica horizonte rochoso próximo da superfície, assim, a profundidade final pode ser diferente

Gate - Top View
Portão - Vista de Topo
Sc. (Esc.): 1:20

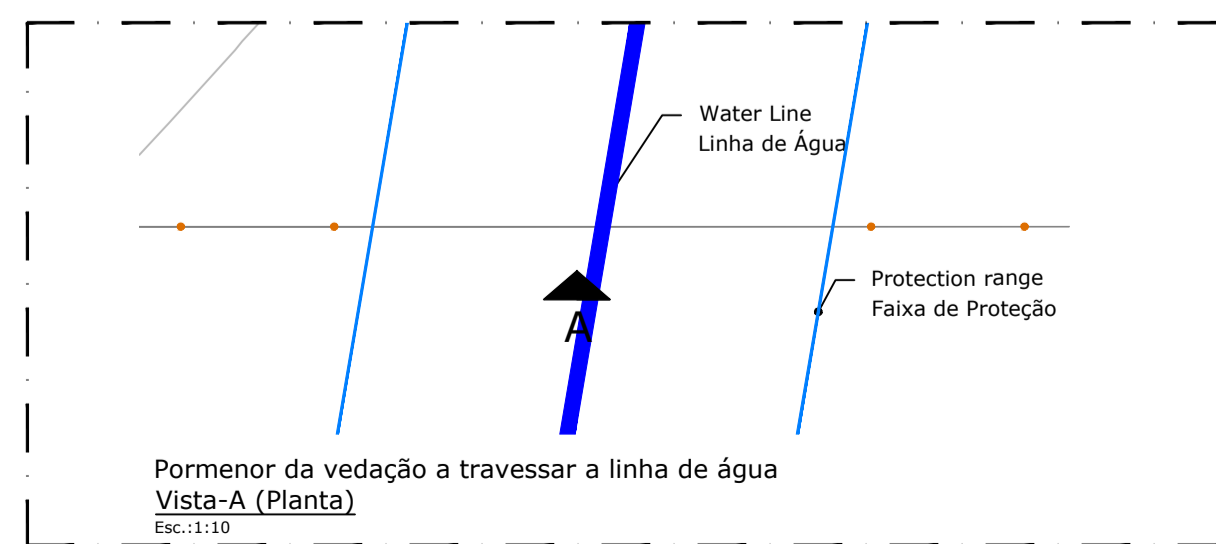
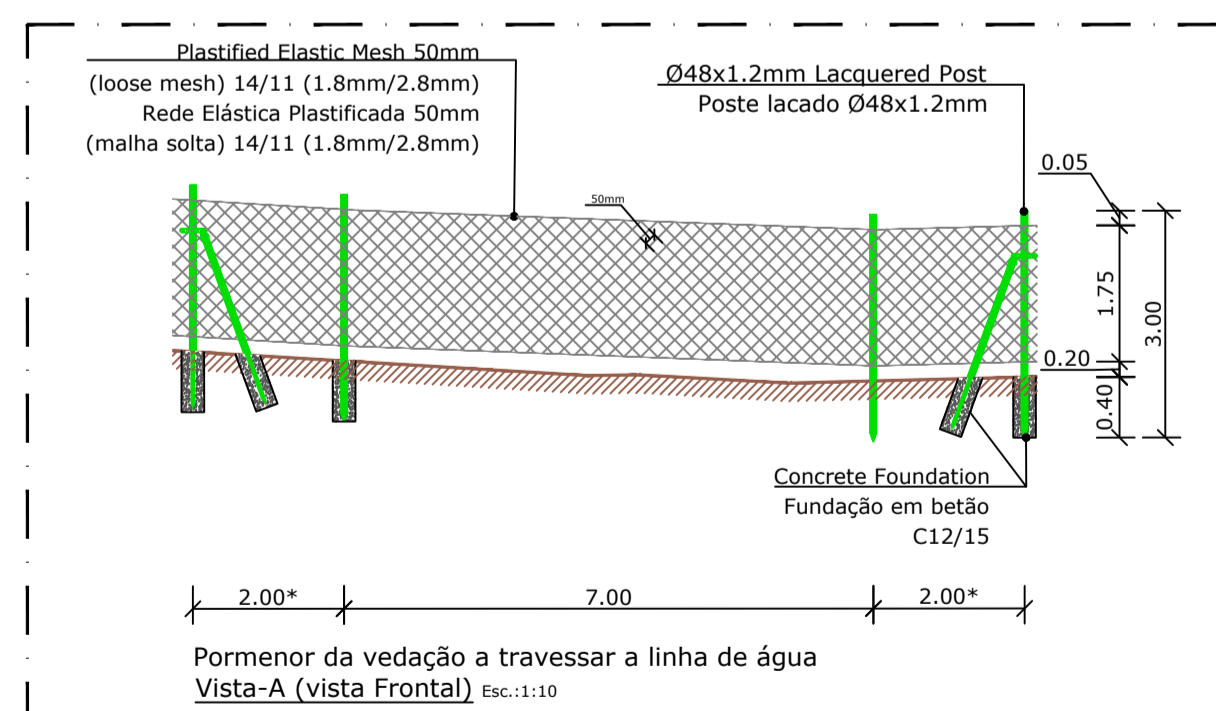
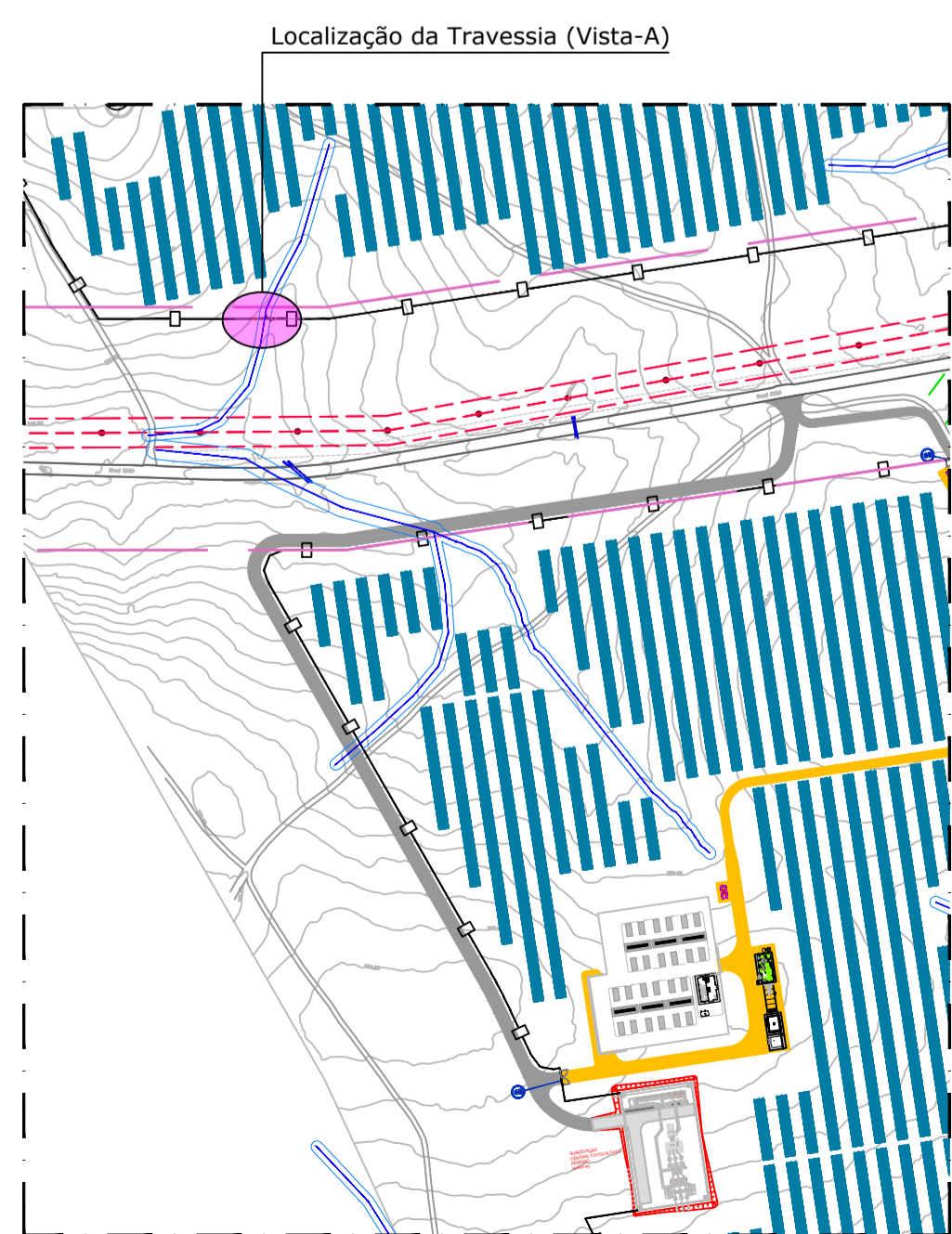


NOTE: This drawing can be changed without noticed in order to be adjusted to final supplier design.

Gate - Front View
Portão - Vista de Frente
Sc. (Esc.): 1:20



NOTE: This drawing can be changed without noticed in order to be adjusted to final supplier design.



	PROJECT: CSF PEREIRO PEREIRO PV PLANT PROJETO BASE BASE DESIGN			
	FILE NAME: PL7.3.1.dwg			
	CLASSIFICATION: A1	SCALE: Indicated	PLOT SCALE: 1:1	SHEET: 01 OF 01
	TITLE: VEDAÇÃO E PORTÕES - PORMENORES FENCE AND GATES - DETAILS			
EGP VALIDATION				
VALIDATED BY: PM	EGP CODE			
VERIFIED BY: JC	GROUP: N	FUNCTION: D	ISSUER: 74	PLANT: PTP
COLLABORATORS: N		TEC: GREEEC	PLANT: 12379	SYSTEM: 16
		PROGRESSIVE: 01	REVISION: 01	