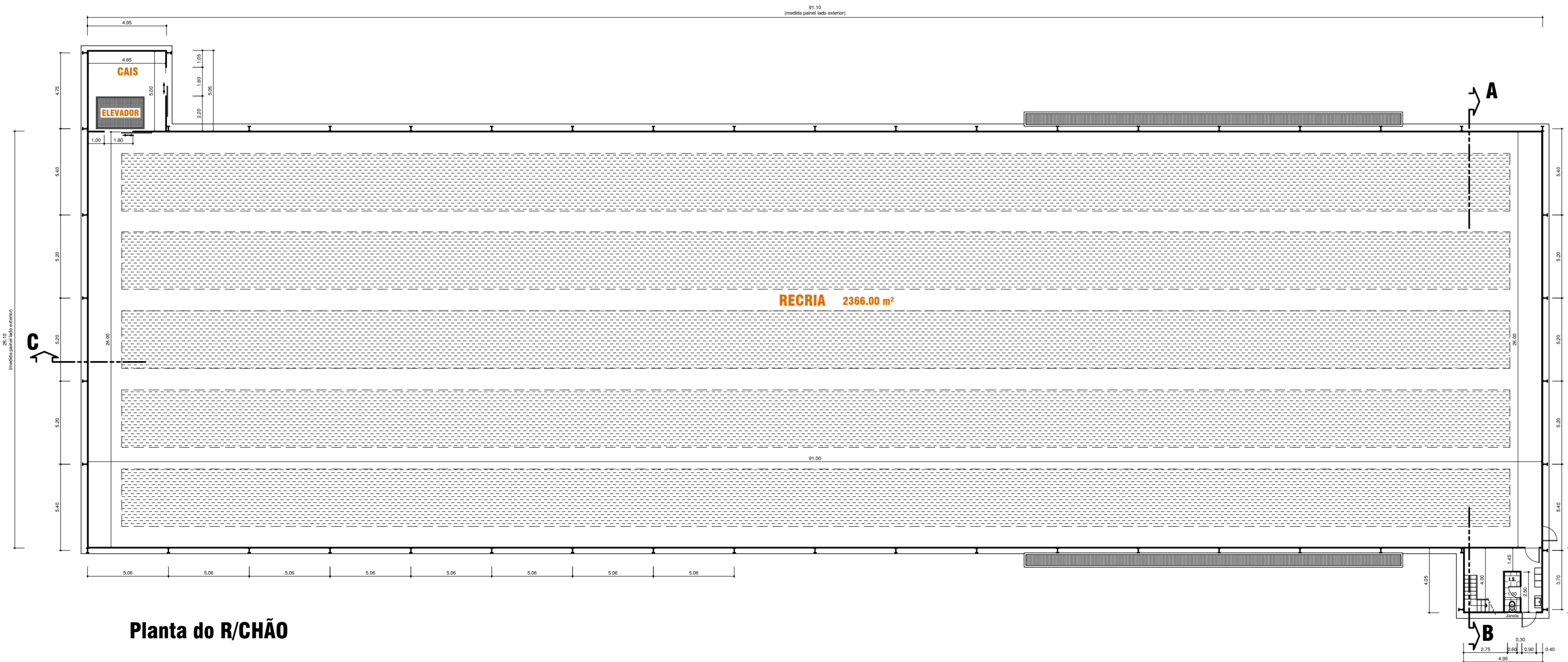
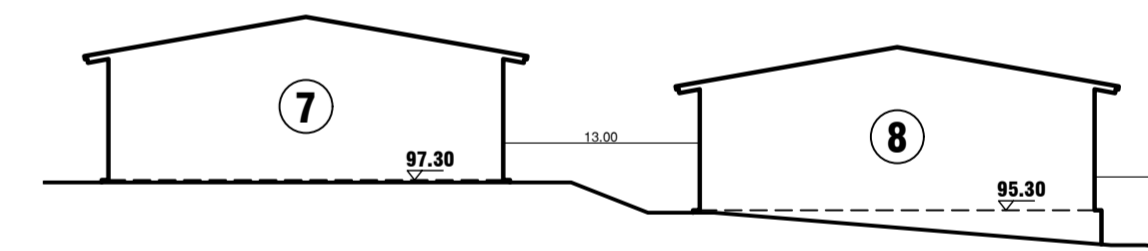


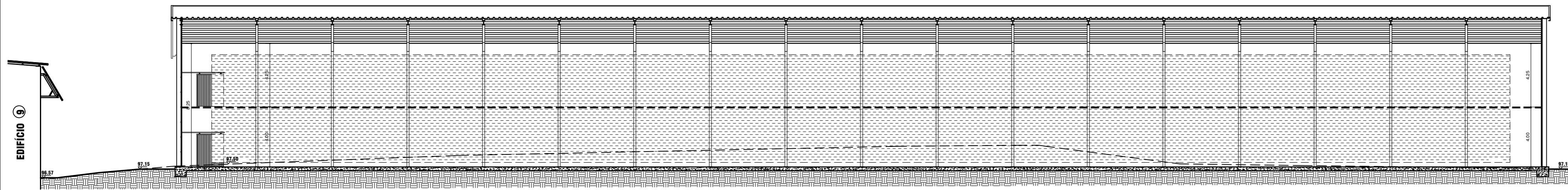
**Planta da COBERTURA**



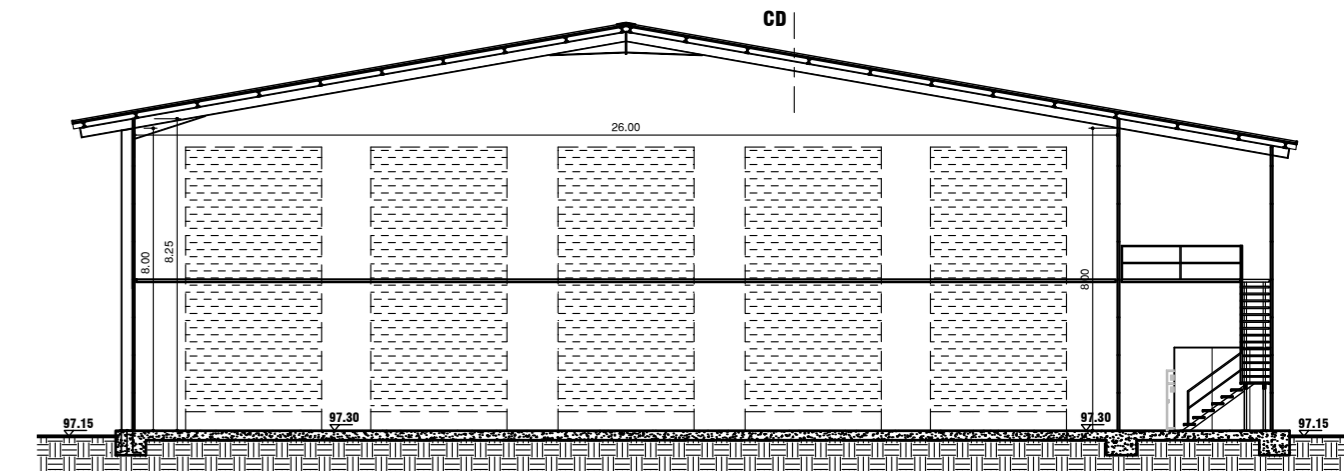
**Planta do R/CHÃO**



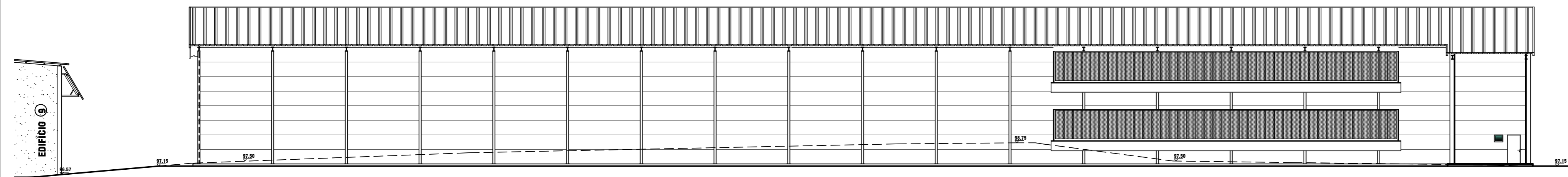
<small>Proj.: GENTESAVERRERA 1 - Penedo,mg</small> Obra:		Proj.: Des.: Data: <i>Abril/2023</i> Escala: <i>1/200</i>
<b>UNIDADE AVÍCOLA ALTERAÇÃO</b>		técnico: Arquit. <i>Suzi Pereira</i>
<b>EDIFÍCIO ⑦ POSTURA</b>		
Requerente: <b>AVIFERREIRA - AVICULTURA Ldª</b>		
Local: Casal Meirinho, Penedo Souto da Carpalhosa - LEIRIA		
Peças: <b>Planta do R/CHÃO e COBERTURA ARQUITETURA</b>		Des. n.º <b>3.1</b>



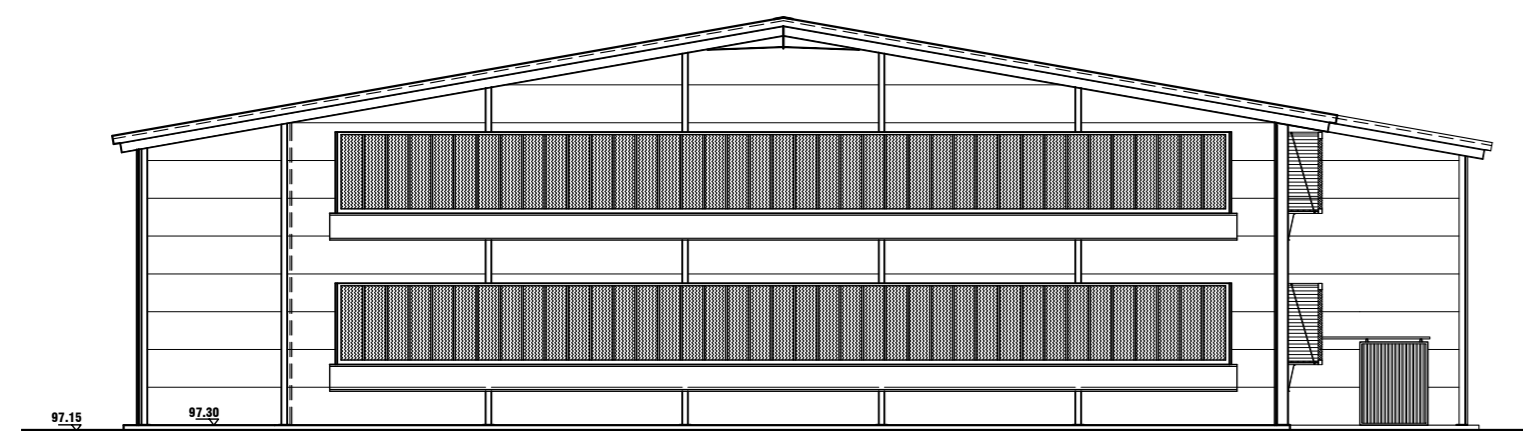
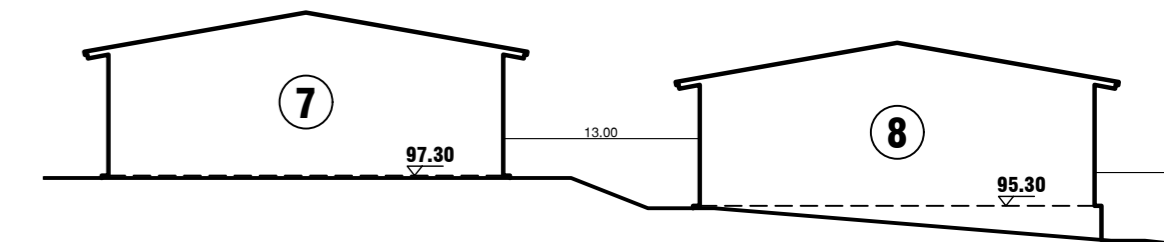
**Corte CD**



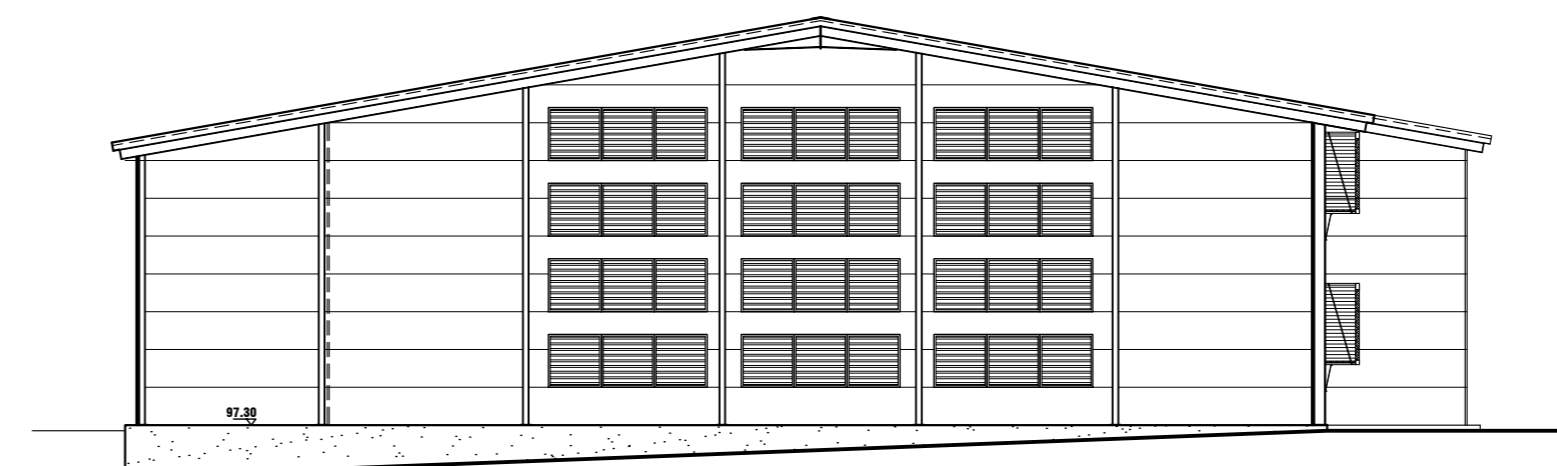
**Corte AB**



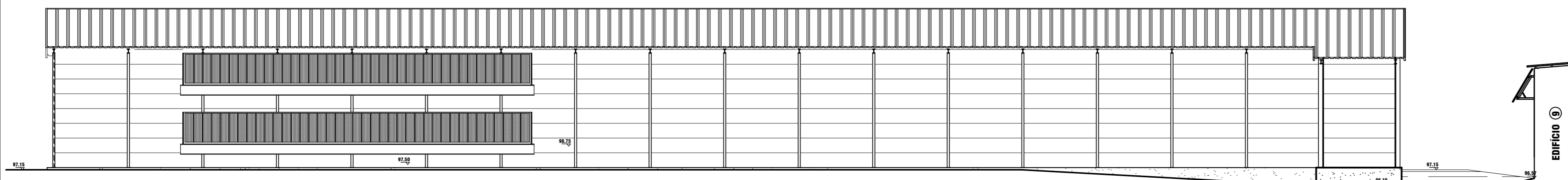
**Alçado SUL**



**Alçado POENTE**

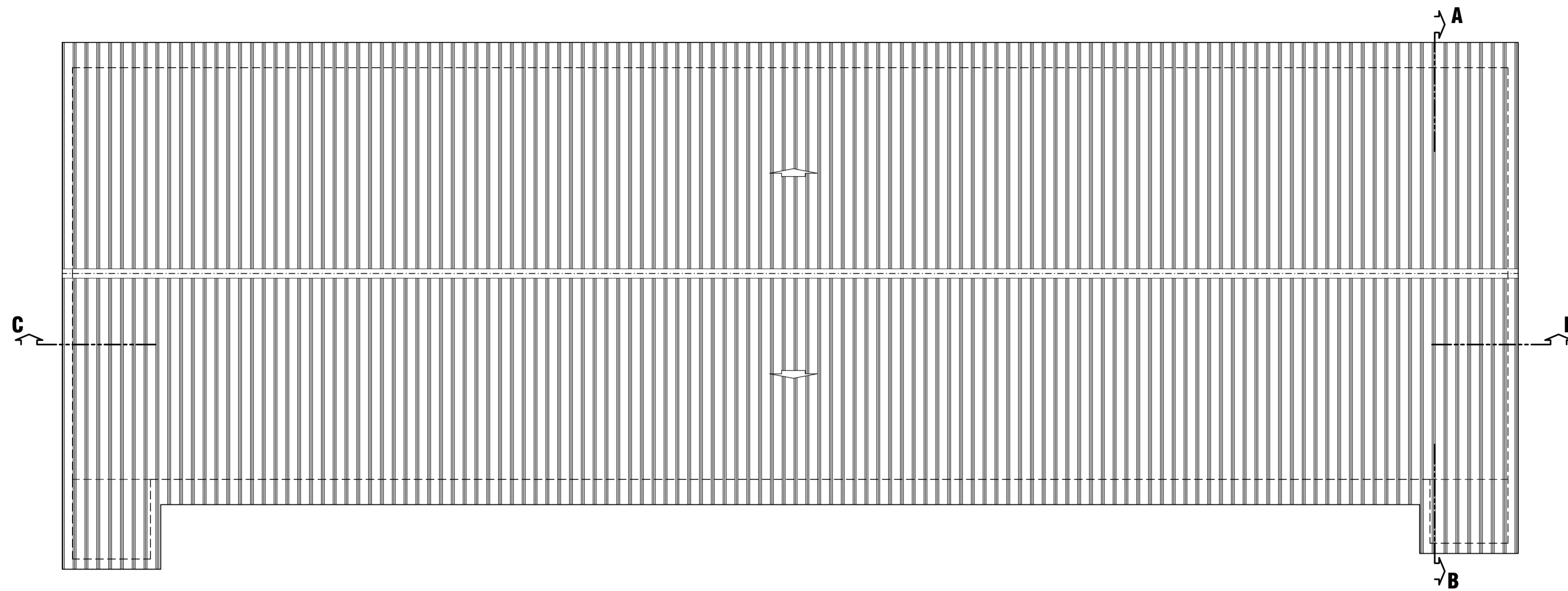


**Alçado NASCENTE**

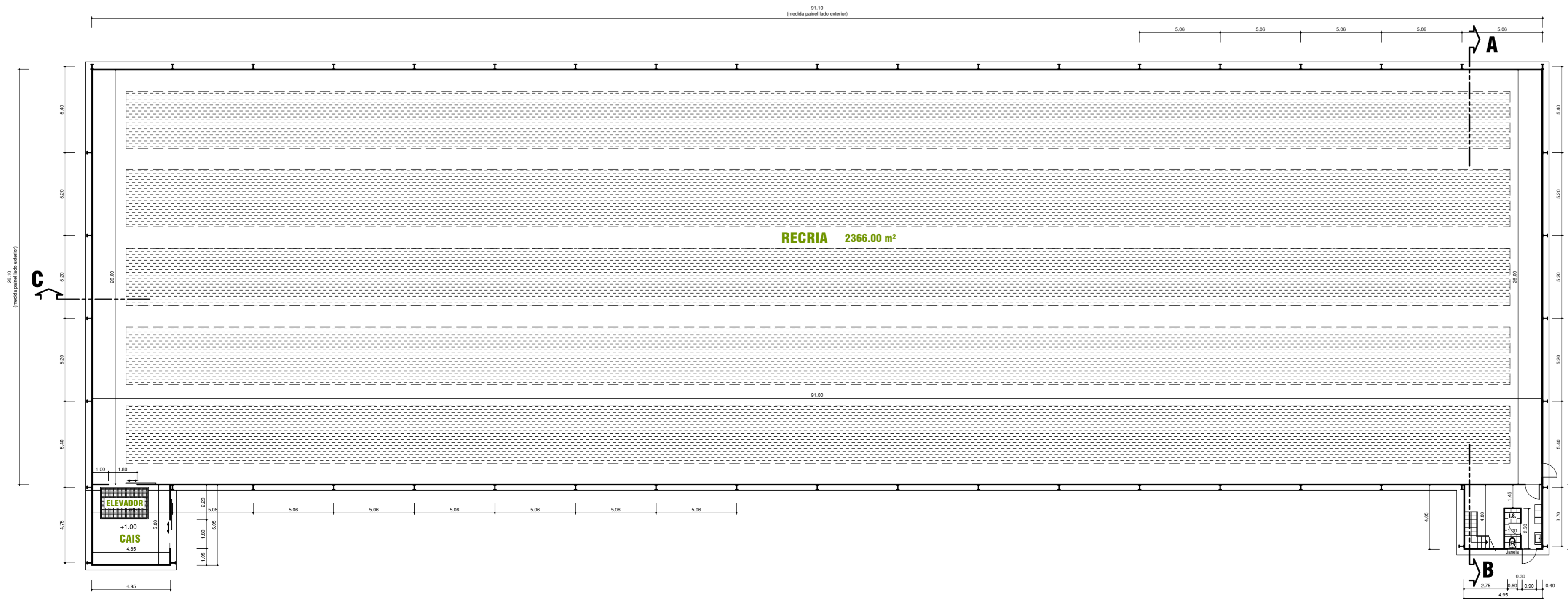


**Alçado NORTE**

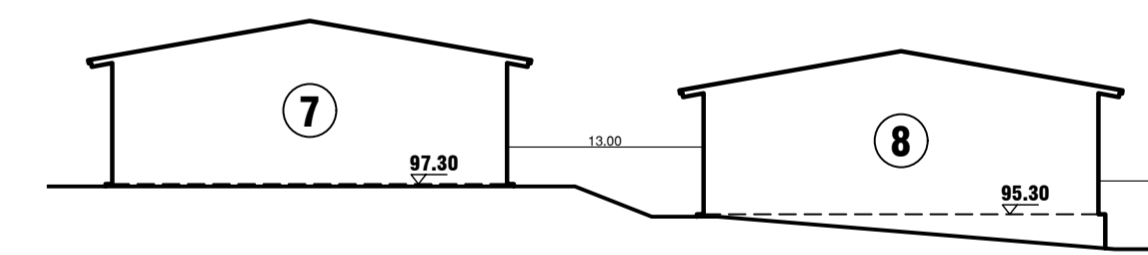
<small>FILE: UNIDADE AVICOLA FERREIRA 1 - Penedo.dwg</small> Obra:		Proj.:
<b>UNIDADE AVÍCOLA ALTERAÇÃO</b>		Des.:
<b>EDIFÍCIO 7</b>		Data: <i>Novembro/2022</i>
<b>POSTURA</b>		Escala: <i>1/200</i>
Requerente:		técnico:
<b>AVIFERREIRA - AVICULTURA Lda</b>		Arquit. Suzi Pereira
Local:		
Casal Meirinho, Penedo Souto da Carpalhosa - LEIRIA		
Peças:		Des. n.º
<b>Alçados e Cortes ARQUITETURA</b>		<b>4.1</b>



**Planta da COBERTURA**

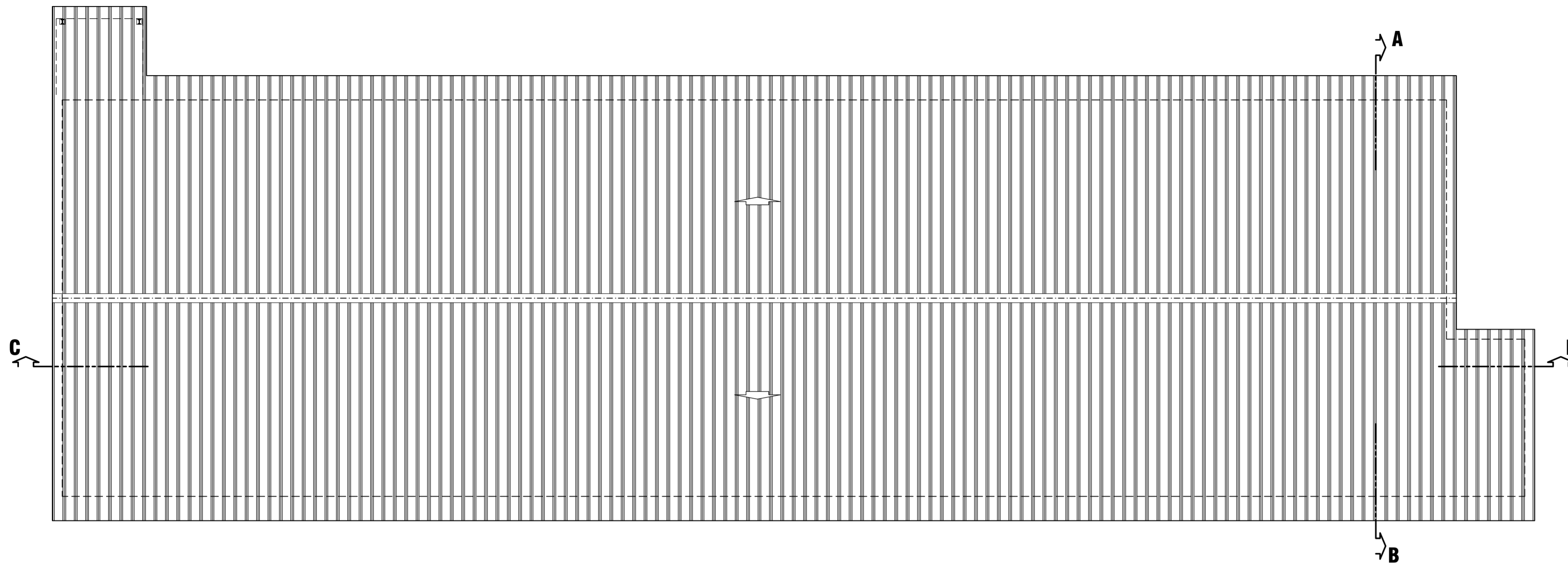


**Planta do R/CHÃO**

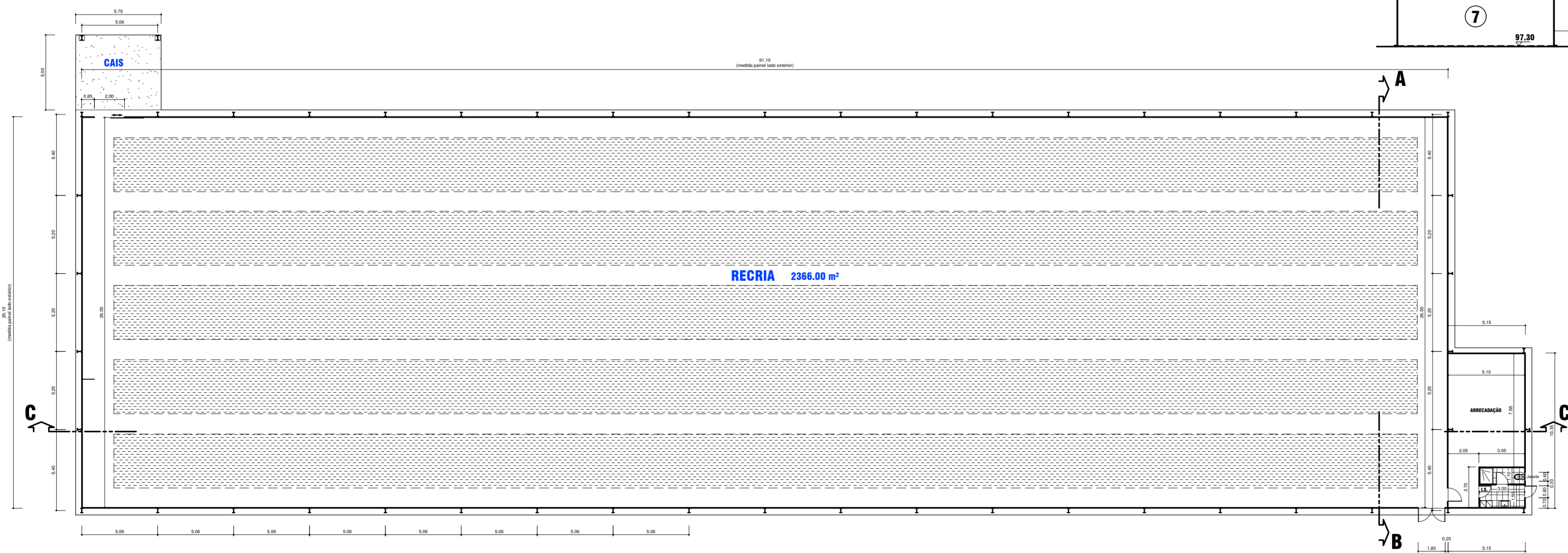


<small>Proj. GENTESAVFERREIRA 1 - Penedo.rtg</small> Proj.:	
Des.:	
Data: <i>Abril/2023</i>	
Escala: <i>1/200</i>	
técnico: Arquit. Suzi Pereira	
<b>UNIDADE AVÍCOLA ALTERAÇÃO</b>	
<b>EDIFÍCIO ⑧</b>	
<b>POSTURA</b>	
Requerente: <b>AVIFERREIRA - AVICULTURA Lda</b>	
Local: Casal Meirinho, Penedo Souto da Carpalhosa - LEIRIA	
Peças: Planta do R/CHÃO e COBERTURA <b>ARQUITETURA</b>	
Des. nº <b>5.1</b>	

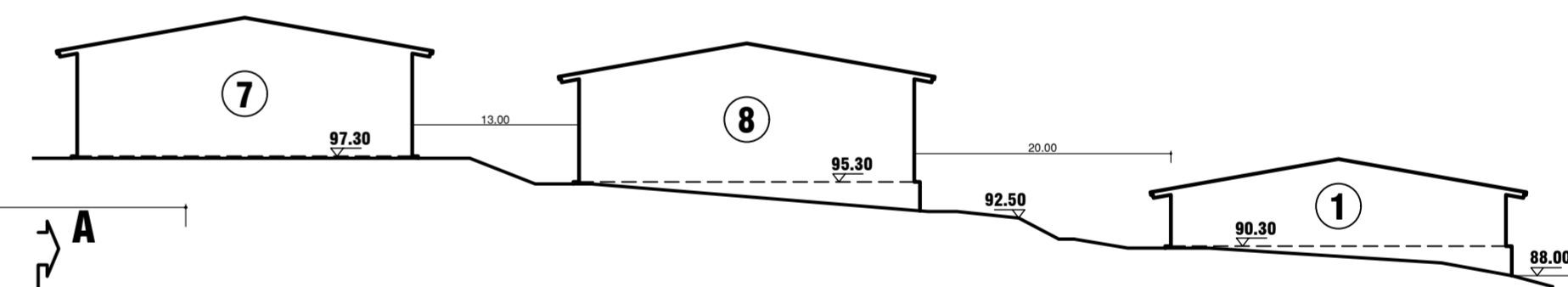




**Planta da COBERTURA**

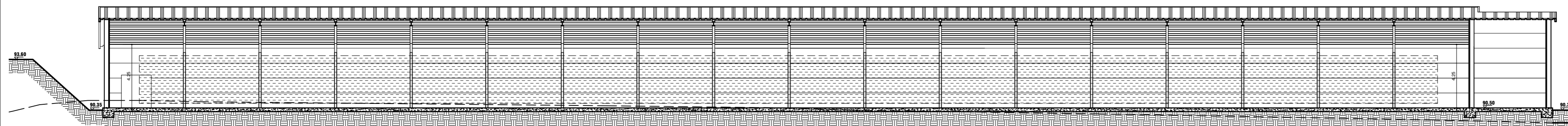


**Planta do R/CHÃO**

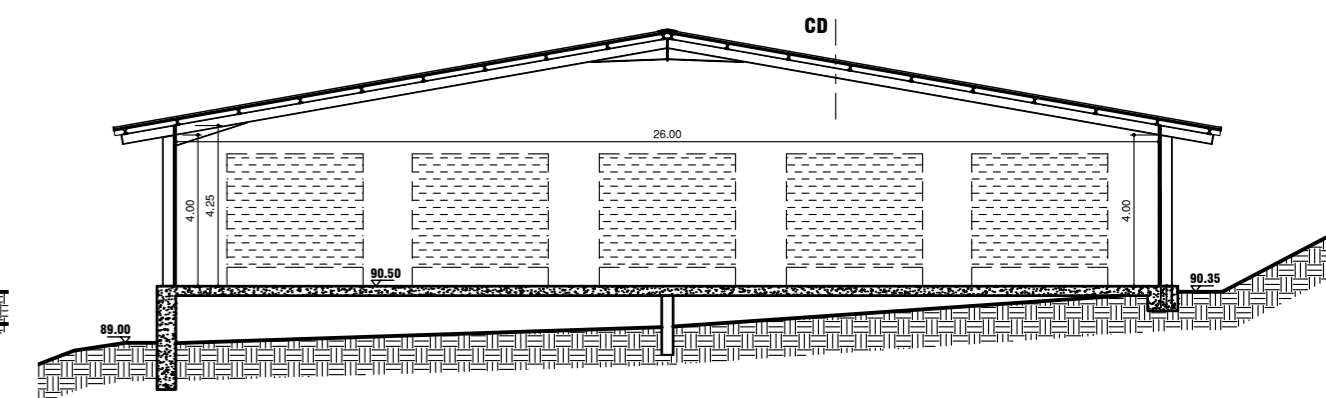


<small>FOU - GENTESAVFERREIRA 1 - Penedo.rtg</small> Proj.:	
Obra:	
<b>UNIDADE AVÍCOLA ALTERAÇÃO</b>	
<b>EDIFÍCIO ①</b>	
<b>RECRIA</b>	
Requerente:	
<b>AVIFERREIRA - AVICULTURA Lda</b>	
Local:	
Casal Meirinho, Penedo Souto da Carpalhosa - LEIRIA	
Peças:	
Planta do R/CHÃO e COBERTURA	
<b>ARQUITETURA</b>	
Des. n.º	<b>7.1</b>

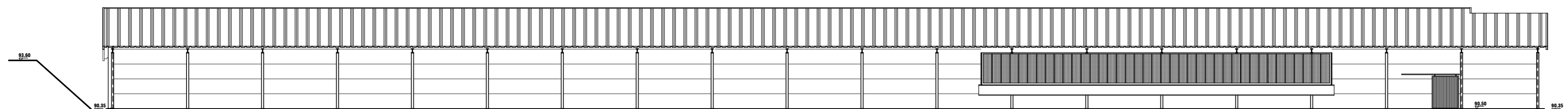
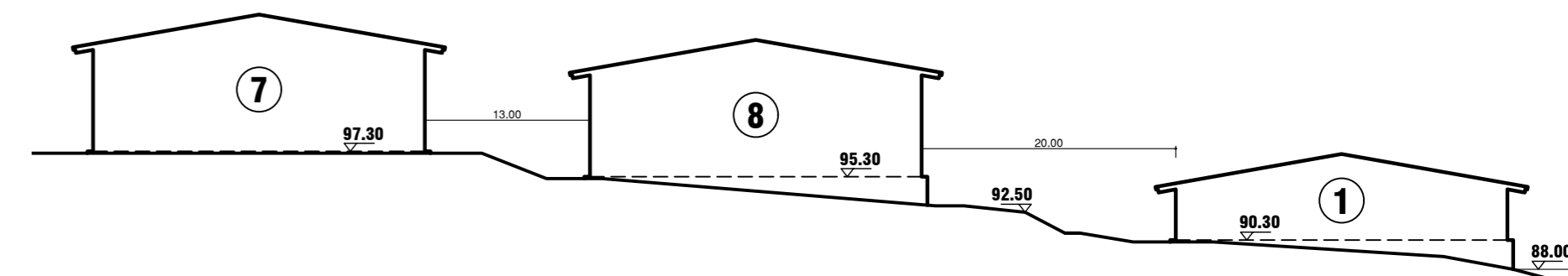
Proj.:
Des.:
Data: <i>Abril/2023</i>
Escala: <i>1/200</i>
Técnico:
Arqit. <i>Suzi Pereira</i>



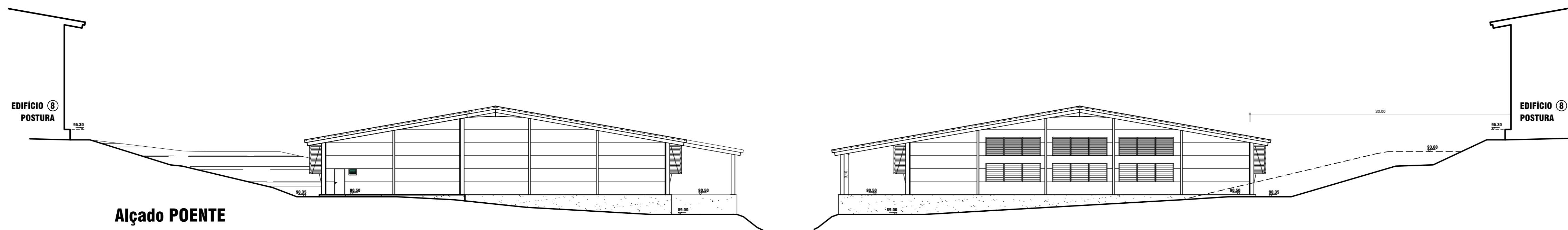
**Corte CD**



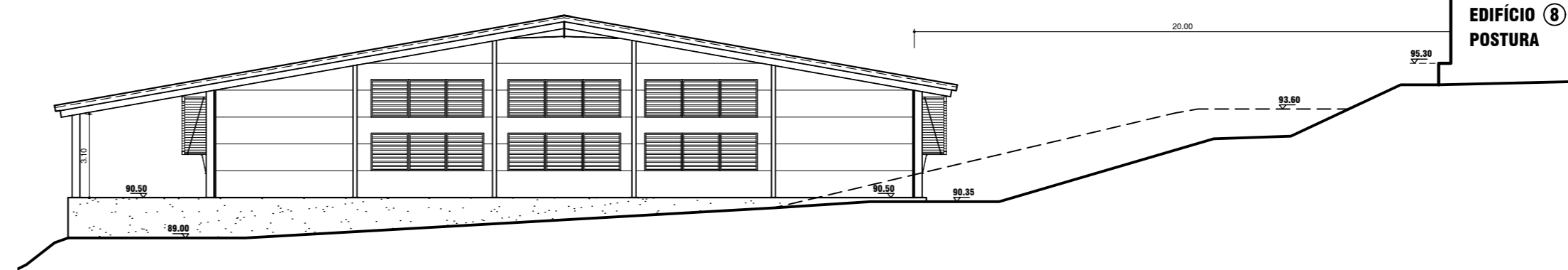
**Corte AB**



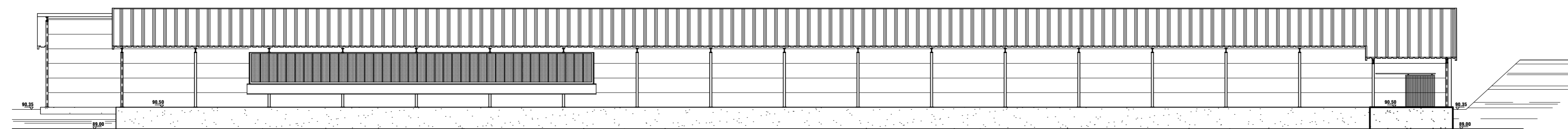
**Alçado SUL**



**Alçado POENTE**



**Alçado NASCENTE**



**Alçado NORTE**

<small>RCH: IGENTES/AVFERREIRA 1 - Penedo.dwg</small> Obra:		Proj.: Des.: Data: <i>Novembro/2022</i> Escala: <i>1/200</i>
<b>UNIDADE AVÍCOLA ALTERAÇÃO</b>		técnico: Arquit. Suzi Pereira
<b>EDIFÍCIO ①</b> <b>RECRIA</b>		
Requerente: <b>AVIFERREIRA - AVICULTURA Lda</b>		
Local: Casal Meirinho, Penedo Souto da Carpalhosa - LEIRIA		
Peças: <b>Alçados e Cortes ARQUITETURA</b>		Des. n.º <b>8.1</b>