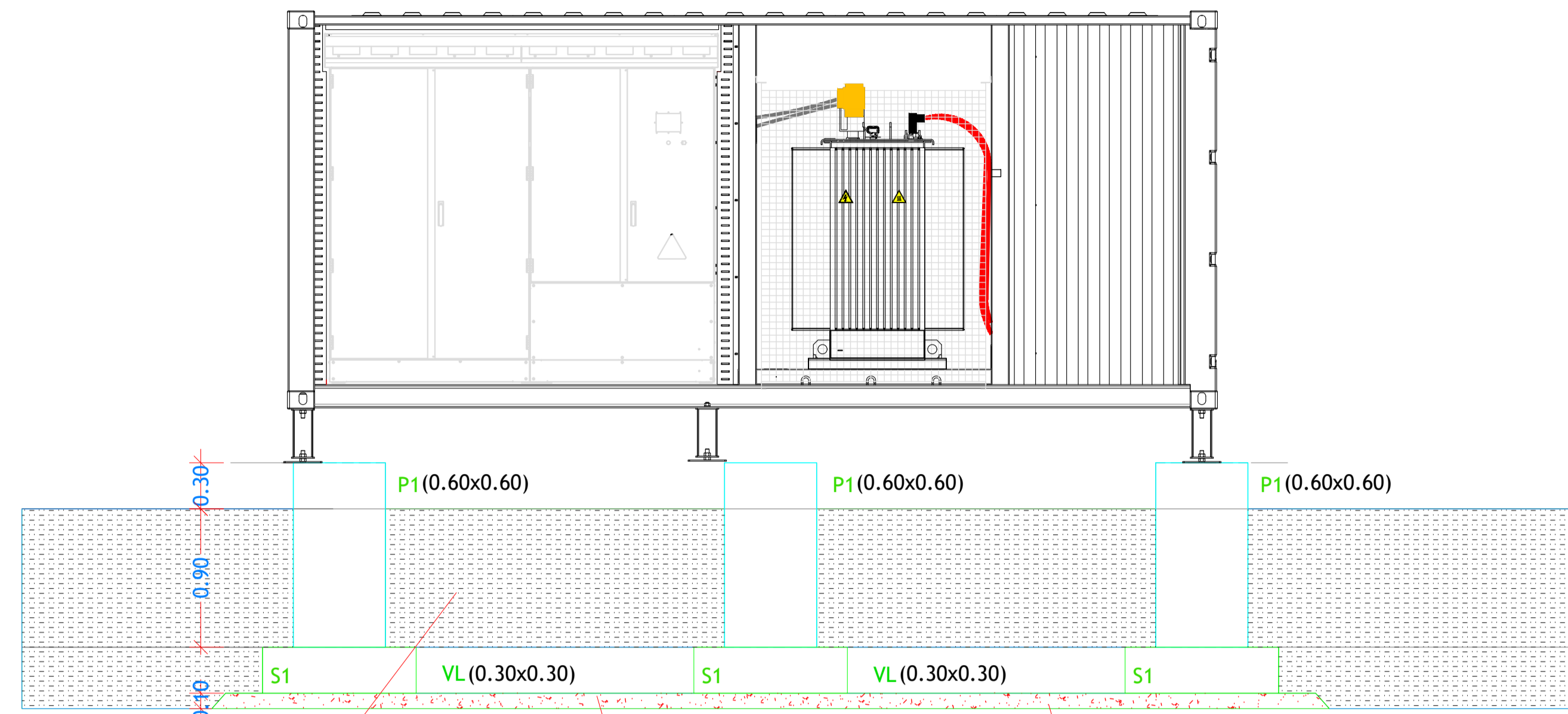


Vista Lateral

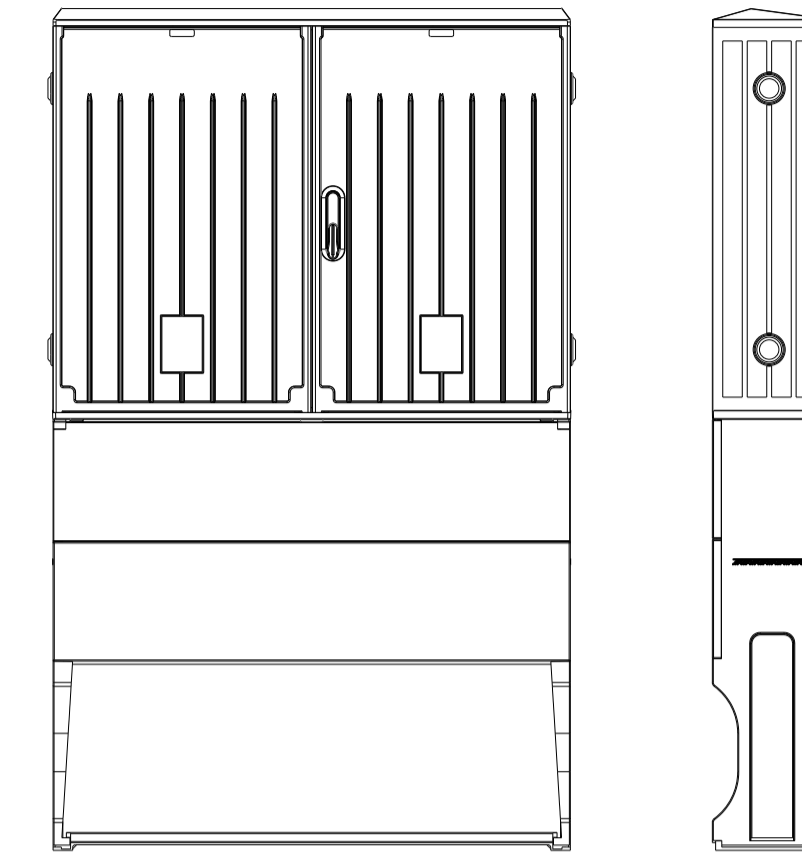


Reposição de Solo compactado

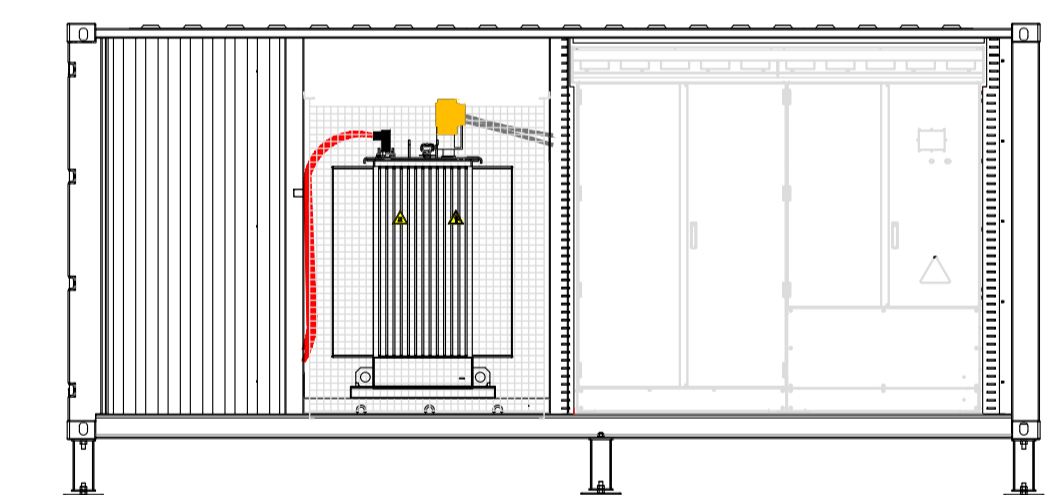
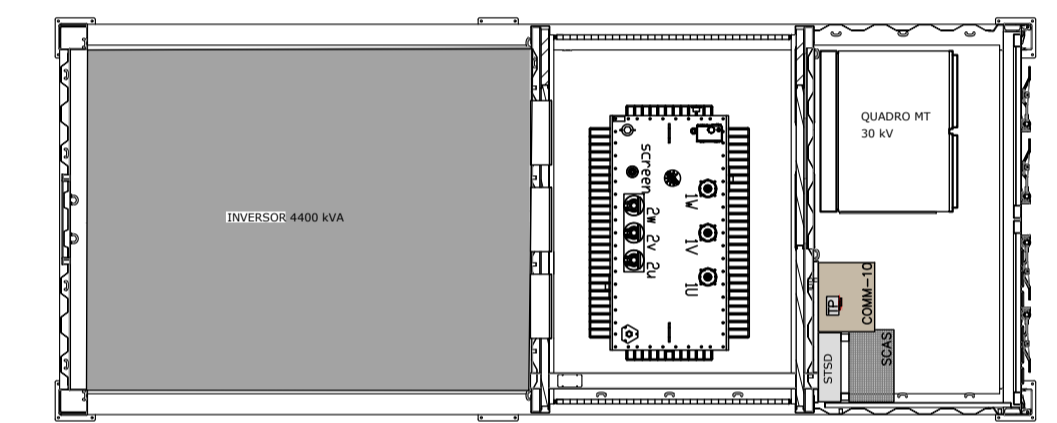
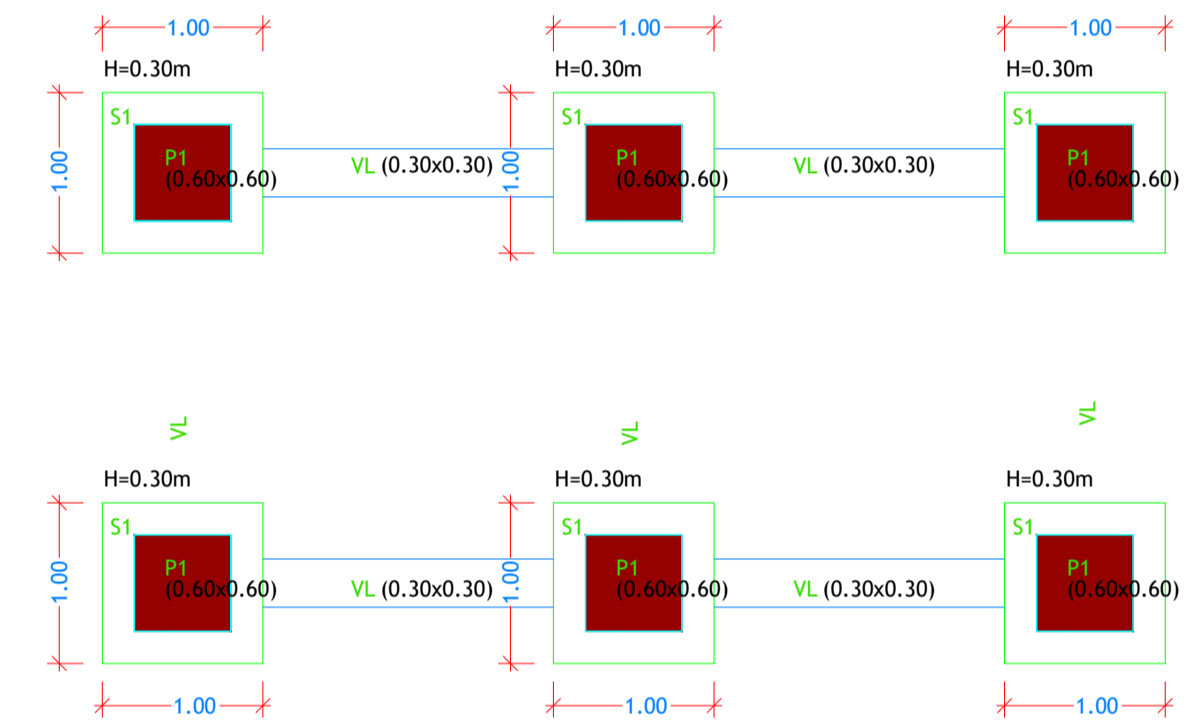
3cm de areia de 0,05 mm a 0,3mm limpa e nivelada

Betão de Limpeza C/ malhasol AQ50

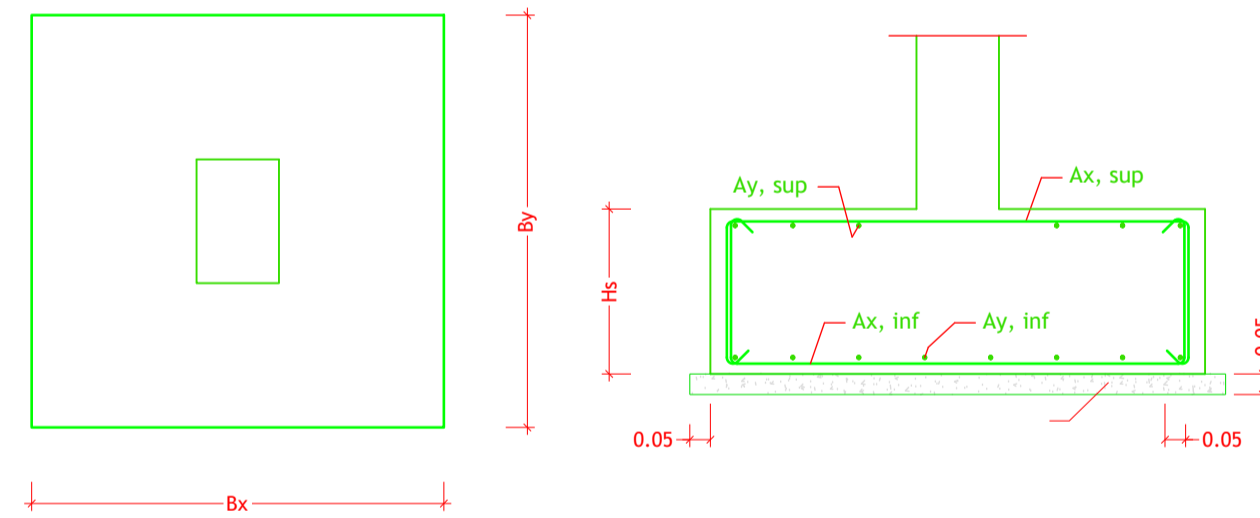
Caixa de Junção



Vista Frontal e Superior



Sapata Tipo

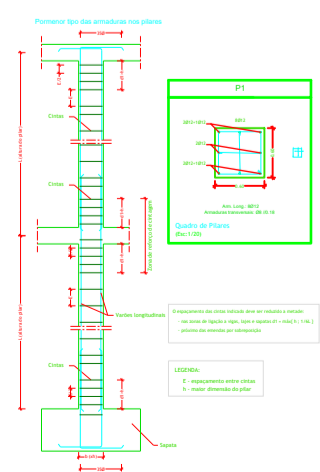


Sapata

QUADRO DE SAPATAS							
DESIGNAÇÃO	Bx(m)	By(m)	Hs(m)	Ax,inf	Ay,inf	Ax,sup	Ay,sup
S1	1.00	1.00	0.30	Ø12//.25	Ø12//.25

σ admissível do solo = 200 kPa

NOTA IMPORTANTE:
Esta tensão terá que ser confirmada na obra pela fiscalização, aquando da abertura dos caboucos.



	PROJECT: CSF PEREIRO PEREIRO PV PLANT PROJETO BASE BASE DESIGN				
	FILE NAME: PL13 - Planta de Alçados e Cortes PT.dwg				
	CLASSIFICATION:	FORMAT: A1	SCALE: Indicated	PLOT SCALE: 1:1	SHEET: 01 OF 01
	UTILIZATION SCOPE:	TITLE: Planta Alçados e Cortes PT Transformer Stations Profile Views			
VALIDATED BY: PM					
VERIFIED BY: JC					
COLLABORATORS: NM					
EGP CODE					
GROUP: GRE	FUNCTION: EEC	TYPE: D	ISSUER: 7	COUNTRY: 4	TEC: PTP
PLANT: 1		SYSTEM: 2		PROGRESSIVE: 3	REVISION: 7
PLANT: 1		SYSTEM: 2		PROGRESSIVE: 3	REVISION: 7
This document is property of Enel Green Power SpA. It is strictly forbidden to reproduce this document, in whole or in part, and to provide to others any related information without the previous written consent by Enel Green Power SpA.					